

# Switzerland

Lakes & Mountains  2025



 The  
**Swiss**  
Holiday Company

# Welcome to The Swiss Holiday Company

We are a small independent company, run by an enthusiastic team of travel people with a great knowledge of Switzerland.

We have selected the leading resorts in Switzerland to promote and they offer a range of different holiday experiences - quiet mountain villages, lakeside tranquillity or the bustle of a town with a great variety of things to see and do. They all have one thing in common and that is the distinctive quality and service you only get in Switzerland.

We also specialise in two and multi centre holidays featuring scenic rail journeys to connect with different areas and resorts. Every holiday we arrange is tailor-made and is backed by over 30 years' experience. Just let us know your requirements and we will take the time to ensure our arrangements are right for you.

Come and discover Switzerland with us.



Kandersteg

Our brochure has been arranged into four types of Swiss holiday. However, the resorts can easily be combined for a tailor-made two or multi centre itinerary.

## Relaxing

 LAKESIDE HOLIDAYS

Page BERNESE OBERLAND

34 Bönigen

36 Spiez

CENTRAL SWITZERLAND

38 Weggis

39 Brunnen

LAKE GENEVA

40 Vevey

41 La Tour-de-Peilz

TICINO

42 Locarno

43 Ascona

44 Lugano



## Picturesque

 MOUNTAIN HOLIDAYS

Page BERNESE OBERLAND

54 Wengen

56 Grindelwald

58 Mürren

60 Wilderswil

62 Kandersteg

VALAIS

64 Zermatt

66 Saas-Fee

GRAUBÜNDEN

68 Klosters

69 Davos

70 St. Moritz

71 Pontresina

## Popular

 SWISS RESORTS

Page BERNESE OBERLAND

18 Interlaken

CENTRAL SWITZERLAND

20 Lucerne

LAKE GENEVA

22 Montreux

24 Lausanne

## Historic

 HIDDEN GEMS

Page VALAIS

82 Brig

GRAUBÜNDEN

84 Chur

EASTERN SWITZERLAND

86 Appenzell

## More information in this brochure

- |                                    |    |                                 |    |
|------------------------------------|----|---------------------------------|----|
| • 10 reasons to choose Switzerland | 4  | • Relaxing lakeside holidays    | 32 |
| • Switzerland for all seasons      | 6  | • Picturesque mountain holidays | 52 |
| • Tailor-made holidays             | 8  | • Historic hidden gems          | 80 |
| • Travel passes                    | 10 | • Travel by rail                | 90 |
| • Scenic rail journeys             | 12 | • Travel by air & transfers     | 92 |
| • 3 & 4 day lake cruises           | 14 | • General information           | 94 |
| • Popular Swiss resorts            | 16 | • Booking conditions            | 95 |



The Swiss Holiday Company, 45 The Enterprise Centre,  
Cranborne Road, Potters Bar, EN6 3DQ

 The  
**Swiss**  
Holiday Company

# 10 reasons to choose Switzerland

## 1 Outstanding scenery

Renowned as having some of the most beautiful scenery in the world, it is a real joy to be on holiday in Switzerland. The stunning lakes and mountains landscape will simply take your breath away. All our resorts have been selected for their picturesque locations, so you will never be far from cruising on a sparkling lake or taking a cable car up to a mountain walking trail.

## 2 Surprising variety

A small country, but so diverse! From the drama of the high Alps to balmy lakes lined with palm trees. From rushing streams carrying meltwater to lush green pastures full of grazing cattle with their distinctive bells. This is a holiday during which you could watch people skiing on a high-altitude glacier, then travel down to a lake on Italy's border and explore a subtropical garden.

## 3 Hassle-free journeys

Flights from the UK to Zurich and Geneva take less than 2 hours. Both airports have their own railway station, so all you need do is walk from baggage reclaim to the platform. The luggage trolleys even go on the escalators! We provide everyone with a personalised itinerary, showing all the train connections and platforms to help you navigate to your first resort and beyond.



## 4 Half Fare Card included

Every holiday includes a Half Fare Card. This fantastic card allows you to make every journey by mainline rail, bus or boat at half the usual price. The cost of your journeys to and from the airport and between resorts is therefore much reduced and you can also use it for days out during your holiday. It even includes discounts on most cable cars and mountain railways. Excellent value.

## 5 Free mountain travel

It seems too good to be true, but there are several mountain resorts in Switzerland where guests have FREE travel on the local cable cars and mountain railways during the summer months. This amazing offer adds up to a huge saving on your holiday spending and allows you to fully explore the local mountains during your holiday. Passes will be provided by your hotel.

## 6 Free travel for children

The complimentary Family Card allows children under 16 to travel around Switzerland for free with their parents. Switzerland is a natural paradise for children: cycling, electric Trottibikes in the mountains, and lake swimming. There are high octane activities for teenagers such as zip wires and rope parks, and most tourist spots have kids trails and playgrounds for little ones.



## 8 Choice of activities

What will you do on your holiday? With over 65,000km of maintained trails, walkers are well catered for: there are easy routes for a scenic stroll and more challenging mountain paths for hikers. Taking a lake cruise is a must do for many, while others will be keen to explore historic castles and museums. Of course, there is always the option to simply relax with a drink and enjoy the view.



## 10 Renowned quality

Switzerland is a by-word for good quality. Visitors are sure to be delighted by the reliability and cleanliness of the public transport network, the standard of accommodation and the quality of the cuisine. Hotels often use cheese & butter from nearby herds, fresh bread from the village bakery, and fruit from local orchards. Many are recommended for their excellent kitchens.



Glacier Express

## 7 Scenic rail journeys

Imagine settling yourself into a comfortable train seat with amazing views through the panoramic windows. Switzerland boasts a number of scenic rail journeys taking you through the country's most picturesque and dramatic landscapes. This could be a real highlight of your holiday - either as a return day trip, or as a fantastic means of reaching your second resort.



Chillon Castle

## 9 Sustainability

Switzerland takes its green credentials seriously. Almost all the electricity needed for the Swiss Federal Railways is generated by hydropower. The pure fresh air is naturally one of the main attractions, and the water is so clean that you can swim in the lakes and even in the rivers that flow through the main cities. Many hotels are signed up to the 'Swisstainable' programme.





## Switzerland for all seasons

The Swiss landscape changes dramatically from season to season. If you are familiar with green mountains and sparkling lakes, try visiting when a gentle blanket of the whitest snow covers the land as far as the eye can see. Spring and autumn are just as entrancing and have the added benefit of the resorts being relatively quiet.



Montreux



Lauterbrunnen

Throughout this brochure you will find resorts and hotels which offer a delightfully different experience with the changing seasons. While the Swiss alpine villages are famous for their winter sports, even non-skiers can enjoy a fabulous holiday in this stunning landscape, with prepared walking trails and plenty of mountain restaurants.

There are some elements to bear in mind when planning your holiday such as the fact that some hotels have a minimum stay requirement during the winter. In the weeks between the summer and ski periods, many cable cars do not operate - this is usually April-May and October-November, but will vary by location. Equally, some excursions do not operate year round, as indicated throughout the brochure and on our website. Some of the scenic rail journeys have seasonal operating dates (see pages 12-13) and lake cruises may have fewer departures in the winter. We recommend checking details before booking; our knowledgeable team will be glad to assist.



Lucerne



## Spring

The actual timing of spring varies according to where you stay. In the warmest climes of the Ticino region, you will find vibrant camellias blooming in March, while in the mountain resorts it can be late May to early June before the delicate alpine flowers open up and the snows retreat to the uppermost peaks. The Lake Geneva region offers memorable spring walks through narcissus fields and newly lush vineyards. Easter is a great time to visit throughout the country, with some warmth in the sun even in the mountain resorts - and the perfect opportunity to sample the famous Swiss chocolate.

**Top tip** Spring is the ideal time for a short break in a resort such as Lucerne. You can enjoy the lake, take excursions to the nearby mountains of Rigi and Pilatus, explore the history of the Old Town, do a little shopping and sample a good variety of restaurants.



## Autumn

As well as being relatively quieter, this is a time of year with some wonderful seasonal produce for the visitor to enjoy. Chestnuts are a Swiss autumnal favourite, along with mushrooms, apples, pears and many varieties of game. You will find some resorts which hold charming festivals in the autumn, celebrating the locally produced cheeses and wine. In the alpine villages, you may spot cattle processing along the road. They come down from the high alpine pastures before the winter starts and are resplendent in their headdresses of flowers and ribbons.

**Top tip** Autumn is perfect for a scenic rail holiday, with beautiful golden hues to enjoy through the panoramic windows as you travel across the changing landscape. You can still find warm sun in early autumn - and enjoy memorable scenes as the mists burn off to reveal stunning views of the lakes and mountains.



## Summer

The Swiss weather can be surprisingly hot at the height of summer - warm enough for a dip in the lake, for palm trees to line the promenades and for glorious subtropical flowers to bloom. That said, you may still need a jacket when you travel up to higher altitudes to enjoy alpine walks and views. There are plenty of festivals large and small at this time of year, making Switzerland a vibrant and cultural place to visit. Swiss National Day is on 1st August when you'll see an abundance of flags, fireworks and celebrations.

**Top tip** When you stay in resorts such as St. Moritz and Saas-Fee in the summer your hotel will give you a free travel pass which allows you unlimited travel on the local cable cars and funiculars. Elsewhere there are a range of great value travel passes to pre-book which allow you to bypass the ticket office queues.



## Winter

Even if you are not a skier you can still enjoy a wonderful holiday at this time of year. Choose an alpine resort for mountaintop fondues under a blue sky and the fabulous après-ski atmosphere. There are idyllic, car-free villages such as Wengen and Zermatt, or lively resorts such as St. Moritz with plenty of restaurants and shopping. If you stay in a lakeside town such as Interlaken, Lucerne or Montreux you can enjoy lake cruises all year round - or use the transport network for a range of excursions up to mountain beauty spots and winter walking trails.

**Top tip** December of course brings Christmas celebrations - or you may like to visit earlier that month for the atmospheric Christmas markets which are becoming ever more popular. Most scenic rail routes operate through the winter so you also have the opportunity to travel across the Alps in all their winter glory.



Cruising on Lake Lucerne



Lake Thun

## Your tailor-made holiday

Getting the details right for your holiday is of paramount importance to us and we provide a personal service to ensure everything is tailored to your individual requirements. If you are not sure where to start, our knowledgeable team will be happy to guide you through the options to find your perfect holiday.



St. Moritz

### About us

The Swiss Holiday Company is run by a small but dedicated team who believe that Switzerland offers a unique holiday destination. Over the years we have had the privilege to work with wonderful, mainly family-run hotels in scenic locations and to organise travel on the incredible Swiss transport network which covers the whole country - from airports to sparkling lakes and mountain top vistas at over 3,000m.



### Book with the **Swiss experts**

Talk to us and we'll advise you on the best itinerary, scenic routes & the benefit of travel passes

- ✓ We check availability and provide a bespoke quotation ... and once confirmed, your price is guaranteed
- ✓ We save you the trouble of separately booking flights, rail tickets, hotels and scenic journeys

- ✓ The hotels featured in this brochure have been personally vetted to ensure quality as described
- ✓ A detailed personal itinerary is provided with your travel documents
- ✓ Your arrangements are supported by our team of Swiss specialists with unrivalled knowledge
- ✓ We are a fully bonded tour operator, which ensures your money is totally protected



## Bespoke arrangements

### Which resorts would you like to visit?

A wide choice of the best of Switzerland's lakeside resorts and mountain villages.

### How long would you like to spend in each resort?

We can offer any duration of holiday from a long weekend to a Grand Tour.

### Why not include an unforgettable scenic journey?

Travel from one resort to the next on a classic scenic rail route with outstanding views.

### Choose your accommodation

Our 3 and 4 star hotels are hand-picked for their warm welcome and great locations.

## Your dining arrangements

Half board (breakfast and dinner) is available at most hotels, often comprising a three or four course meal.

### Any special requests?

Just let us know - perfect views, a relaxing spa, dietary requirements, ease of access...

### What would you like to see and do?

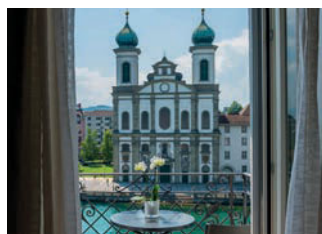
We can recommend the best mountain top cable car rides and serene lake cruises.

### 1st or 2nd class rail travel?

Savour your travel through the beautiful Swiss countryside en route to your resort. Upgrade to 1st class for even more comfort.

## NEW - Private Guiding

More and more people are requesting a truly bespoke holiday experience. And how better to appreciate the region in which you are staying than by having someone who really knows Switzerland guide you? We are delighted to offer private tours with English speaking, professional guides who are based in Switzerland. A day's private guiding is £550 (your travel costs not included). Please let us know your requirements and we will arrange your ideal day.



## Fully flexible Switzerland

The hotel pages show a lead-in 4 night price as a guide - but you are welcome to choose your own duration. Thanks to a great range of scheduled flights to Switzerland, you can usually choose to arrive and depart on any day of the week.

## Celebration holidays

A special day should be spent in a special place! Whether you are recently married or celebrating a 40th anniversary, whether it's a milestone birthday or you want to relive happy memories of a previous visit, the enchanting lakes and mountains of Switzerland provide the perfect backdrop.



## Added value

### Half Fare Card included

Holidays in this brochure include the Half Fare Card, entitling you to unlimited half or reduced price travel on the Swiss transport network of lake steamers, railways, PostBuses, cable cars and most mountain railways. This also includes the scenic rail journeys such as the Glacier Express and Bernina Express.

### Free nights

Many of our hotels offer a free night - see hotel descriptions for details. In some instances if you are staying on a half board basis, your evening meal will also be complimentary on the free night.

### Half board

The half board option available at many hotels offers excellent value for money compared to dining à la carte and normally includes 3 or 4 courses.

### Early booking offers

Reductions are available in hotels across the country when you book early. You can see the full list of hotels on our website, or we can make recommendations to help you find the best deal.

### No single supplement

Negotiated at a number of hotels - please ask for further details.

## Your personalised itinerary

We will be pleased to send you a personalised itinerary with your documents which includes suggested train times from the airport to your resort (including platform numbers in most cases) and where to find your hotel upon arrival. Return journey details are also included. You will also find helpful instructions for any excursions or travel passes you may have booked.





## Travel passes in Switzerland

It is a joy to travel around Switzerland! The Swiss Travel System is efficient and easy to use, so we highly recommend exploring the glorious scenery while you are on holiday. We have included the Half Fare Card in your holiday price, which offers great reductions. You can upgrade to other travel passes, which include unlimited travel and which offer the added bonus of being able to avoid ticket office queues. Please speak to our knowledgeable team to determine the pass that best suits your requirements.



### Half Fare Card Included with your holiday

*The Half Fare Card gives you 50% reductions on*

- Mainline trains throughout Switzerland
- Classic scenic rail routes (booking fee may apply)
- Cruises on lakes Thun, Brienz, Lucerne, Geneva, Lugano, Maggiore\*
- PostBus network across the country
- Local bus and tram travel
- Many mountain trains, funiculars and cable cars

*Upgrade to 1st class*

**Issued to:** All those booking a Swiss Holiday Company break (except self drive holidays; can be purchased as an extra). Available year round.

### Swiss Travel Pass

*prices vary, covers...*

- Mainline trains throughout Switzerland
- Classic scenic rail routes (booking fee may apply)
- Cruises on lakes Thun, Brienz, Lucerne, Geneva, Lugano, Maggiore\*
- PostBus network across the country
- Local bus and tram travel in 90 Swiss towns
- Free travel to Central Switzerland mountains Rigi, Stanserhorn, Stoos
- 50% discount on most other mountain trains, funiculars and cable cars
- Free entry to over 500 museums and attractions

*Available for 3, 4, 6, 8 and 15 days*

*Upgrade to 1st class*

**Suitable for:** Two and multi centre holidays and for travelling extensively through Switzerland. Available year round.



## Tell Pass

from 237 Sfrs for 3 days, covers...

- Cruises on lakes Lucerne, Uri and Zug
- Bus travel around Central Switzerland
- Travel on mountain routes: Rigi, Pilatus, Stanserhorn, Titlis, Burgenstock, Seelisberg, Klewenalp, Urmiberg, Fronalpstock
- Higher lakes and mountains: Brunni, Trübsee, Fürenalp, Göschenen, Realp
- Matterhorn-Gotthard Line including the Furka, Gotthard and Oberalp Passes

Also available for 4, 5 and 10 days

Upgrade to 1st class locally

**Suitable for:** Those staying in **Lucerne, Weggis, Brunnen and Andermatt**. Available May-October.

**SPECIAL OFFER** Winter Tell Pass from only 120 Sfrs for 2 days, November-March.

## Bernese Oberland Pass

from 168 Sfrs for 3 days, covers...

- Rail travel in the region and to Bern, Lucerne, Brig, Gstaad and Montreux
- Bus travel in the region
- Cruises on lakes Thun and Brienz
- Mountain travel: Allmendhubel, Briener Rothorn, Männlichen, Lauterbrunnen, Stechelberg, Niederhorn, Niesen, Pfingstegg, Schilthorn-Piz Gloria, Stockhorn
- Reduction for the the Jungfrauoch

Also available for 4, 6, 8 and 10 days

Upgrade to 1st class

**Suitable for:** Those staying in **Interlaken, Bönigen, Spiez, Kandersteg, Wilderswil, Wengen, Grindelwald and Mürren**. Available all year.



## FREE Mountain Resort Passes

Selected mountain resorts offer their guests FREE travel on the local cable cars and mountain railways during the summer opening season. This fabulous offer is available when you stay 1-3 or more nights and can save you hundreds of pounds on your sightseeing excursions in the mountains.

**Issued to guests in:** **Saas-Fee, Arosa, St. Moritz, Pontresina, Appenzell, Davos and Klosters** guests can buy a similar pass for just 13 Sfrs per day. Available in the summer months.

## FREE The Family Card

Children under 16 travel free around Switzerland when accompanied by a parent, thanks to the complimentary Family Card.

**Issued to:** All families booking a Swiss Holiday Company break. Available year round.



Lake Thun



## Jungfrau Travel Pass

from 165 Sfrs for 3 days, covers...

- Mountain railways: Lauterbrunnen, Kleine Scheidegg, Grütschalp, Männlichen, Schynige Platte
- Eiger Express cable car
- Grindelwald-First cable car
- Funicular Interlaken-Harder Kulm
- Cruises on lakes Thun and Brienz
- Reduced fare for Eigergletscher-Jungfrauoch-Top of Europe
- Also available for 4, 5, 6, 7 and 8 days

**Suitable for:** Those staying in **Wengen, Grindelwald, Mürren and Wilderswil**. Available May-October.

## FREE Interlaken Card, Lucerne Card, Montreux Riviera Card, Lausanne Card and Ticino Ticket

The hotels in these areas offer guests FREE local bus and rail travel, allowing you to explore the surrounding countryside and to reach the base stations for trips into the nearby mountains. You can then use your Half Fare Card for discounts on the cable cars and mountain trains and also for cruises on lakes Thun, Brienz, Lucerne, Geneva, Lugano and Maggiore\*.

**Issued to guests in:** **Interlaken, Bönigen, Wilderswil, Lucerne, Montreux, Vevey, La Tour-de-Peilz, Lausanne, Lugano, Locarno and Ascona**. Available year round.

Please note: prices for all passes are only valid when purchased in conjunction with a Swiss Holiday Company booking and cannot be sold separately. Not all excursions operate year round. Please check before booking.

\*Applies only to the Swiss part of Lake Maggiore.

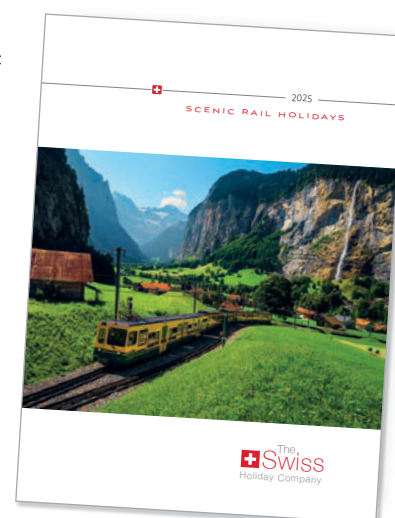


Glacier Express

## Scenic rail holidays

For many, the highlight of a Swiss holiday is travelling along one of the scenic routes which cross this beautiful country. Switzerland's rail network is easy to use and so reliable that you can confidently plan a two or multi centre holiday, using a wonderful scenic journey to connect your chosen resorts. You are free to choose your arrival and departure day, how many resorts you stay in and the number of nights spent in each resort. All the journeys shown can be enjoyed in either direction.

*Please take a look at our dedicated Scenic Rail Holiday brochure for a range of recommended holiday itineraries with these trains. You will also find suggestions with other scenic routes including the Centovalli Line, Lötschberg Regio Express, Treno Gottardo, Voralpen Express and the Arosa Line.*



### Glacier Express

A panoramic journey through the heart of Switzerland on board the world's slowest express train. In just under 8 hours the Glacier Express winds its way up to over 2,000m at the Oberalp Pass, through the unspoilt natural beauty of a landscape of glaciers, ancient forests, rushing mountain streams and valleys. Drinks are available all day and your specially prepared lunch is served at your seat as you watch the incredible landscape pass you by at a leisurely pace. An English commentary is available through your headphones.

Available in Excellence Class, 1st class and 2nd class

*Full journey 8 hours. Available all year except 12 October-5 December 2025.*

Enjoy this journey between **Zermatt, Brig, Chur, St. Moritz**  
Also connect to **Pontresina**. Combine with the **Bernina Express**

*In Excellence Class you can enjoy additional benefits including:*

- Welcome desk & personal check-in on the platform
- Guaranteed window seats
- Exclusive carriage with only 20 seats
- Access to the VIP Glacier Bar
- Welcome drink
- Seasonal 5 course menu with accompanying wines



## Bernina Express

Crossing the Alps in style, the train climbs to an impressive 2,223m to the Bernina Pass and offers breathtaking vistas from the comfort of the panoramic carriages. Experience graceful viaducts, galleries hewn from the sheer rock, rushing mountain streams, glaciers and even an alpine garden. The journey is by scenic rail between Chur and Tirano and scenic bus between Tirano and Lugano.

Available in 1st and 2nd class

*Full journey 7 hours. Chur-Tirano available all year. Tirano-Lugano February-November only.*

Enjoy this journey between **Chur, St. Moritz, Pontresina, Lugano** Also connect to **Davos, Klosters**. Combine with the **Glacier Express** and **Gotthard Panorama Express**

Also available as a day trip **St. Moritz** or **Pontresina** to **Tirano**.



## Luzern-Interlaken Express and GoldenPass Express

The complete route is an extraordinary journey on two trains, with a panoramic view of the breathtaking scenery over three different passes. Depart from historic Lucerne and cross the Brünig Pass to Interlaken in around 2 hours. Change to the new GoldenPass Express which journeys along Lake Thun, through the beautiful Simmen Valley and Gstaad in the high Alps. You enjoy a dramatic descent through Les Avants to Lake Geneva and Montreux. There is a dining car between Lucerne and Interlaken and on the GoldenPass Express an at seat service, with selected platters available to pre-order.

Available in Prestige Class, 1st class and 2nd class

*Lucerne-Interlaken 2 hours. Interlaken to Montreux 3¼ hours. Available all year.*

Enjoy this journey between **Montreux, Spiez, Interlaken, Lucerne**. Combine with the **Gotthard Panorama Express** and **Lötschberg Regio Express**

## Gotthard Panorama Express

The faster Gotthard Base Tunnel opened in 2016, but the Gotthard Panorama Express continues to use the more leisurely and picturesque route of the old tunnel.

This wonderful leisurely journey starts with a 2¾ hour cruise on an elegant motor or steam paddle boat on Lake Lucerne, whose shoreline is dotted with idyllic villages. The cruise passes the historic Rütli meadow, birthplace of the Swiss Confederation and the association with Wilhelm Tell.

At Flüelen you transfer to the 1st class panorama carriages of the Gotthard Railway through the famous old 15km tunnel to Airolo where you will be under the influence of the Italian lifestyle of the Ticino region. Enjoy the scenery as you arrive into the lakeside resort of Lugano.

Available in 1st class

*Full journey 6 hours. Available daily (except Mondays) 18 April-19 October. At other times you can enjoy the route on standard trains and boats.*

Enjoy this journey between **Lucerne, Weggis, Lugano**. Also connect to **Locarno, Ascona**. Combine with the **Bernina Express** and **Luzern-Interlaken Express**





## Unique 3 lakes cruise experience

Experience Switzerland's 3 lakes region a little differently, on board the **Boutique Attila Boatel**. A modern lake cruiser with a difference, the Attila allows you to relax and enjoy the picturesque scenery of Lakes Murten, Biel and Neuchâtel in western Switzerland - in select company as there are only 9 cabins.

*Can be added on to any Switzerland holiday, with overnight stays in a Murten hotel as required*



### The Attila Boatel – a unique, relaxed experience

The Attila does not offer excessive luxury but an elegant, modern and relaxed cosy style. Ingeniously re-imagined from shipping containers, this is a novel way to cruise that you may have never before encountered. The nine quirky cabins comfortably accommodate two people, with a fantastic floor to ceiling glass balcony door and seats to sit outside and admire the view. Clever space-saving design features ensure the cabins include everything from a fridge, TV and hairdryer to an en-suite with shower and air conditioning. The Captain's Lounge and the upper sun deck with its views across the lake invite you to relax and enjoy the experience.

### Your 3 lakes cruise

This region has a huge amount to offer visitors yet is relatively unknown for most UK visitors. Quieter than some other regions but with some very pretty lakeside scenery and historic towns, the 3 lakes area will be a delight to discover. You'll cruise on Lake Neuchâtel – Switzerland's largest lake - Lake Biel and Lake Murten, each connected by canals. With two or three nights on board, you will see some glorious scenery and have plenty of opportunities to explore the villages and countryside around the lakes. A tour and tasting at one of the region's excellent wineries is also included.



## Breakfast and dining

With the smell of fresh coffee in the air, a hearty breakfast is served in the Captain's Lounge or outside on the sun deck. Drinks and snacks are served throughout the day and are included in the price. In the evening, guests disembark to dine in carefully selected lakeside restaurants serving quality local dishes and wines. This is a real treat, dining alongside the locals and having a flavour of authentic Switzerland. Back on board, guests can relax and enjoy a nightcap from the honesty bar.



## Activities onboard and ashore

The Attila has a platform from which you can swim freely and experience being not only on the lake but in the lake, or maybe try stand up paddle boarding. You may prefer to relax on board with a drink and soak up the sun amid the wonderful scenery. During your leisure time ashore there are plenty of optional activities. You will visit picturesque towns and historic places of interest or perhaps discover unique bird watching at La Sauge nature centre. There's also the option to hire bikes and cycle along the lake shore or travel up into the mountains for an alpine walk.

### 4 day Time Out Cruise 3 nights £1,750pp

Embark in Murten Tuesday 12.30

#### Day 1

Welcome regional wine tasting and snacks  
Cruise through the Broye Canal into Lake Neuchâtel  
Cruise through the Zihl Canal into Lake Biel  
Ingenious lowering of the upper deck to pass under the Zihl Bridge  
**Mooring at Le Landeron**  
Dinner in a lakeside restaurant

#### Day 2

Buffet breakfast  
Choice of activities on the boat – lake swim and stand up paddle board - or ashore such as St. Peter's Island walks.  
Return journey through the Zihl Canal to Lake Neuchâtel  
Optional visit to the Laténium archaeological museum  
Trip on the Train Touristique to a scenic viewpoint  
**Mooring at Neuchâtel**

Evening at leisure. There is a good choice of restaurants in Neuchâtel and the crew will be pleased to recommend one to fit your preferences

#### Day 3

Breakfast cruise across Lake Neuchâtel, past the Fanel nature reserve  
Return through the Broye Canal to Lake Murten  
Guided tour of the BirdLife conservation centre  
Guided tour and tasting at a Lake Murten vineyard  
**Mooring at Murten**

Captain's Dinner on board, freshly prepared by the Hotel Bad Murtensee

#### Day 4

Disembark in Murten Friday 10.00  
Buffet breakfast at the Hotel Bad Murtensee



### 3 day Weekend Cruise 2 nights £1,250pp

Embark in Murten Friday 14.00

#### Day 1

Welcome regional wine tasting and snacks  
Cruise through the Broye Canal into Lake Neuchâtel  
Cruise through the Zihl Canal into Lake Biel  
Ingenious lowering of the upper deck to pass under the Zihl Bridge  
**Mooring at Erlach**  
Dinner in a lakeside restaurant

#### Day 2

Buffet breakfast  
Choice of activities on the boat – lake swim and stand up paddle board - or ashore such as St. Peter's Island walks  
Return journey through the Zihl Canal to Lake Neuchâtel  
Vineyard tour and wine tasting  
**Mooring at Estavayer-le-Lac**  
Dinner in a lakeside restaurant

#### Day 3

Breakfast cruise across Lake Neuchâtel, past the Fanel nature reserve  
Return through the Broye Canal to Lake Murten  
Disembark in Murten Sunday 12.00



## Prices include

- Cleverly designed twin cabin (single supplement available on request)
- Full buffet breakfast and snacks on board
- Swiss cuisine in the evenings at a lakeside restaurant
- Welcome drinks and snack
- Wine, beer and soft drinks on board throughout the day and at dinner
- Guided tour and wine tasting in a local vineyard

## Time Out Cruise *as above except*

- One dinner at a lakeside restaurant, one evening at leisure (dinner not included) and one Captain's Dinner on board
- Extra tours included - BirdLife centre guided tour and Neuchâtel train

Cruises operate on selected dates May-September



Lucerne

# Popular

 SWISS RESORTS

Interlaken, Lucerne, Montreux & Lausanne - these are fabulous resorts which people return to time and again. Each has a wonderful location on or close to a lake, with mountains close at hand. Thanks to the excellent travel network, there is a wide variety of easily accessible scenic excursions available. These towns are also lively places to stay, with historic areas, museums, plenty of shopping and a great choice of restaurants and cafés. It is a joy to stay in any of these popular resorts, to explore, and to get to know beautiful Switzerland.



## The lakes

Montreux and Lausanne nestle beside Lake Geneva; Lucerne is on the lake of the same name and Interlaken sits on the small section of river which connects Lake Thun and Lake Brienz (both within walking distance). Each of these four lakes is simply beautiful – nothing beats relaxing in a waterside café with a drink and a splendid view. Be sure to take a walk along the lakeside promenades, which are bursting with colourful flowers in the summer. While staying in any of these resorts, it will be hard to resist boarding a scenic day cruise: it is a true highlight of your holiday to explore the lakeside villages, castles and beauty spots that ring the water.

## The mountains

If you would like to explore the mountains, it is easily done from our four main resorts. Making your way via the network of cog railways and cable cars, there is a good choice of mountain visits where you can marvel at the views over the respective lakes and across to the high Alps. The Swiss mountains are well prepared for visitors, featuring alpine cafés with sun terraces, information points and prepared walking trails to suit all abilities. For those who want to venture further and experience high altitude panoramas, you can visit the Jungfrauoch from Interlaken, Mount Titlis from Lucerne, and Glacier 3000 from Montreux and Lausanne.





## Food and culture

History abounds, particularly in Lucerne with its medieval painted houses and old city walls. Be transported back in time at Montreux's Chillon Castle or take a short trip from Interlaken to find romantic castles along the lake. Lucerne has a plethora of interesting museums, while Montreux is largely associated with music – you can visit Queen's recording studios and of course it is renowned for the annual jazz festival. Good food is available in all the resorts, perhaps with a French flourish in Montreux and Lausanne and traditional Swiss influence in Lucerne and Interlaken. Treat yourself in an award-winning restaurant or find a traditional fondue house for a cheesy delight.

## Scenic rail day trips

You have a great choice of day trips when you stay here. The Luzern-Interlaken Express and GoldenPass Express are famously scenic routes linking the resorts and each can be enjoyed as a return day trip. From Lucerne you also have the Voralpen Express to historic St. Gallen and the Emmental Regio Express to Bern. From Interlaken there's the Lötschberg Regio Express to picturesque Kandersteg.

## Year round stays

These resorts work well for holidays all year round – they don't have a closed season unlike the mountain villages in spring and autumn. Indeed, these are lovely times to visit! You can enjoy the shops and restaurants whatever the weather and the major excursions are available year round. The shipping companies operate a winter timetable, perfect for a cruise amongst the snow covered mountains.

Find more information on these pages:	Resort Information	Hotel Information
<b>Interlaken</b>	18-19	26-28
<i>Quieter alternative: Bönigen</i>	34	
<b>Lucerne</b>	20-21	28-30
<i>Quieter alternative: Weggis</i>	38	
<b>Montreux</b>	22-23	30-31
<b>Lausanne</b>	24-25	31
<i>Quieter alternative: La Tour-de-Peilz</i>	40	





# Interlaken

A perfect choice, with two lakes and the Jungfrau mountains

Fly to Zurich under 2 hrs  
2 hr 15 mins train transfer  
with direct trains every 2 hours  
Geneva flights also available

Welcome to **Interlaken**, without doubt a top resort from which explore this exciting region. There are the lakes of Brienz and Thun for cruises - or you could stop off and take funicular trains and cable cars up to enjoy spectacular views. Head by train to the beautiful Jungfrau mountains for a choice of iconic visits such as Jungfrauoch or Schilthorn.



Interlaken



## Must do visit to **Jungfrauoch - Top of Europe** with unforgettable view above the Aletsch Glacier

3,454m - All year

*Your day of wonder starts with a journey from Interlaken to Grindelwald, where you join the Eiger Express gondola, followed by a final ascent by train through the mountains to Jungfrauoch station.*

A highlight of your journey is the best view of the famous Eiger North Face as you travel by gondola to the Eiger Glacier. Once at the top you will have magnificent views of the longest ice stream in the Alps - the Aletsch Glacier - which is 22km long and up to 800m thick! Visit the ice palace, the Sphinx viewing platform and spoil yourself with lunch at the Crystal restaurant. Warm clothing recommended all year.





## Not to be missed **A leisurely cruise from Interlaken on Lake Thun exploring lakeside villages**

Lake Thun cruises operate all year round

*Buy a day ticket and relax on board as the lake steamer criss-crosses the lake for its full journey of over 2 hours each way between Interlaken and Thun.*

*The boat station is centrally located in Interlaken and stops at many picturesque lakeside villages and castles such as Oberhofen and Spiez, so that you can disembark and explore. You could also leave at Beatenbucht and take the funicular and cable car to the Niederhorn. Lunch on board is a delight and if you upgrade to first class you'll have the best views from the top deck. Lake Brienz also has cruises April-October to Giessbach and Brienz.*

## Getting around

Our holidays include the **Interlaken Guest Card** offering free local bus travel. Interlaken has unrivalled rail and boat connections - enjoy discounted excursions with the **Half Fare Card** which is included in your price. If you like to be out exploring, we recommend adding on the **Bernese Oberland Pass** which covers UNLIMITED free journeys on a huge range of rail, lake steamers, scenic mountain railways and cable cars. You also benefit of bypassing queues at the ticket offices.

## Other excursions from Interlaken

- Brienz Rothorn steam railway - half day
- Schynige Platte & Alpine Garden - half day
- Schilthorn cable car & revolving restaurant - full day
- Stockhorn mountain with stunning views - half day

## Two centre scenic rail holidays

Interlaken works well with the Lucerne-Interlaken Express, GoldenPass Express and Lötschberg Regio Express - see page 12.



## **Harder Kulm** – Views down to the lakes

1,322m - All year

*Half day visit. The funicular station is in the centre of Interlaken and takes you up to the local mountain for incredible views. From the viewing platform you have a magnificent panorama of the Eiger, Mönch and Jungfrau. Walking trails are excellent and the picturesque panoramic restaurant is a great choice for lunch.*

## Always included

**FLIGHTS + HOTELS + RAIL TO RESORT**

**PLUS!** The fantastic **Half Fare Card** which gives you heavily discounted prices for all your excursions from Interlaken. We are fully bonded with ATOL for your financial protection.

## Holiday suggestions

- **7 nights Interlaken**  
Full day Jungfrauoch, full day Schynige Platte, full day Lucerne via the Luzern-Interlaken Express, half day lake cruise
- **4 nights in Interlaken and 3 nights in Montreux**  
Memorable GoldenPass Express two centre holiday

**Choose your hotel...** Our selected 3 and 4 star hotels are featured on pages 26-28

# Popular

 **SWISS RESORTS**



# Lucerne

Picture perfect lake, glorious mountains and an historic old town

Fly to Zurich under 2 hrs  
1 hr 10 mins train transfer  
Geneva flights also available

Lucerne is a wonderful choice for your stay with all you would ask for from a Swiss holiday. It enjoys a delightful lakeside setting, with the attractive old town to wander around. There are plenty of mountains to visit by cog railways and funiculars and of course Lake Lucerne - one of Switzerland's most beautiful lakes - where you can cruise all day.



## What better way to spend a few hours than a **magical cruise on Lake Lucerne**

Operates all year

*A cruise around this majestic lake at a leisurely pace makes a perfect way to see the picturesque landscapes of lakeside villages, meadows and mountains rising dramatically from the serene waters.*

### **Half or full day cruises from Lucerne.**

There is a full schedule of cruises operating across the lake on a fleet of twenty boats including five historic paddle steamers. The routes take you to wonderful villages where you can travel up the mountains on funicular railways or cable cars. A two hour journey each way to Brunnen is a favourite and with excellent catering on board you can enjoy refreshments or leisurely lunch. Upgrade to first class for access to the upper deck and great views.





## Not to be missed **Mount Rigi, 'Queen of the Mountains'** with spectacular views over the lake

1,797m – All year

*A wonderful full day excursion. Lake cruise from Lucerne to Vitznau and discover why Mount Rigi is one of the most popular mountains. The peninsula location enables you to enjoy Rigi's impressive and renowned panoramic views from a variety of walking trails to suit everyone. Others may like to relax awhile in the alpine surroundings and enjoy memorable views from sun-kissed terraces of the many mountain restaurants. The Rigi is a mountain for all seasons, where the walking trails can be enjoyed even in the snowy months.*

### Getting around

Our holidays include the **Lucerne Visitor Card** offering free local bus travel. Lucerne has excellent rail and boat connections so you can make the most of discounted excursions with the **Half Fare Card** which is included in your price. If you like to be out exploring, we recommend adding on the **Tell Pass** which covers UNLIMITED free journeys on a huge range of rail, lake steamers, scenic mountain railways and cable cars. You also benefit from bypassing queues at the ticket offices.

### Other excursions from Lucerne

- Stanserhorn – half day via cable car with open upper deck
- Cruise to Beckenried and cable car to Klewenalp. Half day
- Mount Titlis – full day via Engelberg and revolving cable car
- Bürgenstock – half day including an exhilarating lift

### Two centre scenic rail holidays

Lucerne works well with the Luzern-Interlaken Express, GoldenPass Express and Gotthard Panorama Express - see page 12.



## **Mount Pilatus** - Splendid visit via lake cruise, cogwheel railway and cable car

2,129m- June to October (cable car operates all year)

*Full day visit. The Golden Round Trip is a unique journey which starts with a lake cruise to connect with the world's steepest cog railway to the summit. Return by a spectacular cable car ride and panoramic gondola to Lucerne. There is a choice of restaurants on the summit with beautiful views.*

### Always included

**FLIGHTS + HOTELS + RAIL TO RESORT**

**PLUS!** The fantastic **Half Fare Card** which gives you heavily discounted prices for all your excursions from Lucerne. We are fully bonded with ATOL for your financial protection.

### Holiday suggestions

- **7 nights Lucerne**  
Full day cruise, full day Mount Rigi, full day Interlaken on the Luzern-Interlaken Express, half day to Stanserhorn
- **4 nights in Lucerne and 3 nights in Lugano**  
Gotthard Panorama Express two lakes holiday

**Choose your hotel...** Our selected 3 and 4 star hotels are featured on pages 28-30

# Popular

 **SWISS RESORTS**

The Swiss Riviera has it all - beautiful lake, mountains and culture

Fly to Geneva under 2 hrs  
1 hr 10 mins direct train transfer  
Zurich flights also available

Montreux's promenade stretches for 4 miles along Lake Geneva, from picturesque Castle Chillon past all the gardens and quays of Montreux to Clarens. In front you have Switzerland's largest lake, with daily cruises including to the stunning vineyards and villages of Lavaux. Behind you, the magnificent Swiss Alps and a choice of mountain railways for lovely views.

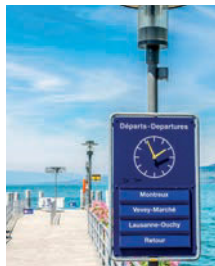


## Board a Lake Geneva cruise to view the grandeur of the Swiss Riviera landscape with a backdrop of the Alps

Up to three cruises daily April to October

*A two hour cruise from Montreux. Relax and enjoy the sights around the eastern end of Lake Geneva - choose the midday departure and book lunch on board.*

This delightful short cruise on a small part of Switzerland's largest lake heads towards Chillon Castle giving you a fantastic view from the water. It meanders round to the border village of Saint-Gingolph where the French portion of the lake starts. Vevey is your next destination - try and catch a glimpse of the statue of Charlie Chaplin who lived here for the last 25 years of his life. Return to Montreux is via the last stop at Clarens.





## Not to be missed **The Chocolate Train to Gruyères & Nestlé-Cailler's chocolate factory**

Operates on selected days May to September. Booking essential.

*Your full day starts from Montreux in style aboard the 'Belle Époque' vintage Pullman coaches. The picturesque train journey takes you high above the lake to Montbovon where you board a coach through the scenic countryside to the charming village of Gruyères and your visit to the famous cheese dairy. The coach then takes you to the Nestlé-Cailler factory in Broc where you can discover the secrets of chocolate making; the visit ends with an invitation for chocolate tasting! Return to Montreux is by a scenic coach ride.*



## Getting around

Our holidays include the **Montreux Riviera Card** offering free local bus and rail travel with reductions at both Chillon Castle and Charlie Chaplin's house. Montreux has excellent rail and boat connections so you can make the most of discounted excursions with the **Half Fare Card** which is included in your price. If you like to be out exploring, we recommend upgrading to the **Swiss Travel Pass** which covers UNLIMITED free journeys on a huge range of rail, bus and lake steamer routes. You also benefit from bypassing queues at the ticket offices.

## Other excursions from Montreux

- Charlie Chaplin's home at Vevey – half day
- Lavaux – half day exploring the vineyards
- Gstaad via GoldenPass Express, full day to the chic alpine resort
- Geneva – full day exploring the city

## Two centre scenic rail holidays

Montreux works well with the GoldenPass Express (which also connects with Luzern-Interlaken Express), and the Glacier Express via Brig - see page 12.



## **Les Rochers-de-Naye** towering above Montreux is a real scenic gem

2,045m - All year

*Half day visit with wow factor. From Montreux the cog railway takes 55 minutes revealing a spectacular vista culminating in a series of unique views of both the French and Swiss Alps and sparkling Lake Geneva. Visit the marmot sanctuary where you can see these normally shy bundles of fur and enjoy the charming Alpine Garden June to October. Refreshments with panoramic views, a number of great walking trails ... make it a full day visit?*

## Always included

FLIGHTS + HOTELS + RAIL TO RESORT

**PLUS!** The fantastic **Half Fare Card** which gives you heavily discounted prices for all your excursions from Montreux. We are fully bonded with ATOL for your financial protection.

## Holiday suggestions

- **7 nights Montreux**  
Half day cruise, full day to Gstaad, full day to Lavaux vineyards and wine villages, half day to Chillon Castle
- **3 nights in Montreux and 4 nights in Lucerne**  
Superb GoldenPass Express two centre holiday

Choose your hotel... Our selected 3 and 4 star hotels are featured on pages 30-31

**Popular**  
+ SWISS RESORTS



# Lausanne

Historic home of the Olympics with a fantastic waterfront

Fly to Geneva under 2hrs  
50 mins direct train transfer  
Zurich flights also available

A stay in the lively city of **Lausanne** offers so much, from the old town with its charming alleyways and impressive cathedral to the attractive Ouchy lakeside area. There are a number of museums to enjoy including the fascinating Musée Olympique. Throw in a vivacious café culture and a choice of scenic lake cruises and you have a perfect Swiss Riviera resort.



**Relax on a lake cruiser** as you gently explore the waters of Lake Geneva with superb views of the mountains

Frequent departures every day

*Cross the water to France!* There are regular direct services from Lausanne across Lake Geneva to the pretty French lakeside villages of Evian-les-Bains and Thonon-les-Bains, either of which make for a lovely day out.

Alternatively, step back in time for a full or half day cruise on one of the lovingly restored paddle steamers which travel from Lausanne to Vevey and Montreux, or in the other direction to Morges, Nyon and Geneva. There is nothing like feeling the breeze in your hair and the sun on your face as you relax with a drink on one of the nostalgic vessels. On selected services you are able to dine on board as you glide past the stunning scenery (booking recommended).







## Not to be missed Lavaux historic vineyards - a UNESCO treasure beside the lake

Available every day

*What a delightful way to spend a day. Cruise along the shore from Lausanne to an historic site – the ancient vineyard terraces of the Lavaux, where vines have been cultivated since the 11th century. There are some lovely walks between the charming villages, offering great views of the lake and the mountains beyond. Make time for lunch in one of the restaurants and try your choice of the local wine, or visit the Lavaux Vinorama discovery centre with 280 different labels on offer.*

## Getting around

Our holidays include the **Lausanne Transport Card** offering free local bus, metro and rail travel with reductions at many museums and attractions. Lausanne has excellent rail and boat connections so you can make the most of discounted excursions with the **Half Fare Card** which is included in your price. If you like to be out exploring, we recommend upgrading to the **Swiss Travel Pass** which covers UNLIMITED free journeys on a huge range of rail, bus and lake steamer routes. You also benefit from bypassing queues at the ticket offices.

## Other excursions from Lausanne

- Chillon Castle – half day historical visit
- Olympic Museum in the home of the IOC. Half day
- Morges – half day to the delightful village on the lake
- Geneva – full day to get to know the city

## Two centre scenic rail holidays

Lausanne works well with the GoldenPass Express via Montreux, (which also connects with Luzern-Interlaken Express) and the Glacier Express via Brig - see page 12.



## Glacier 3000 in the high Alps is an unforgettable day out

3,000m – All year

*A full day visit to the roof of the Vaud Alps. This delightful journey takes around 2 hours from Lausanne to Glacier 3000, travelling via the mountain railway from Aigle to Les Diablerets. The scenic journey culminates in a cable car ride. On arrival, you'll spy snow on the peaks even in the summer. There are plenty of activities here including a walk across a suspension bridge between 2 peaks with exhilarating views over the Alps. The scenic 5k flat walk is a delight and refreshments can be enjoyed in the restaurant.*

## Always included

FLIGHTS + HOTELS + RAIL TO RESORT

**PLUS!** The fantastic **Half Fare Card** which gives you heavily discounted prices for all your excursions from Lausanne. We are fully bonded with ATOL for your financial protection.

## Holiday suggestions

- **7 nights Lausanne**  
Half day cruise, full day Glacier 3000, full day to Lavaux vineyards and wine villages, full day to Montreux and Chillon Castle
- **3 nights in Lausanne and 4 nights in Lucerne**  
GoldenPass Express two lakes holiday

Choose your hotel...Our selected 4 star hotel is featured on page 31

# Popular

 SWISS RESORTS



**INTERLAKEN**  
Hotel De La Paix ★★★

*Why we love this hotel...* small, family-run hotel in a quiet spot just a few minutes' walk from the town centre. Relaxation is key, whether you enjoy the pleasant garden on warm summer evenings or settle down in the cosy lounge. The hearty buffet breakfast will set you up for the day, taken in a breakfast room graced by a collection of antique clocks.

A quiet haven in Interlaken  
**B** | Standard room  
**A** | With balcony: +£9pppn  
 Special offers available



Available April - November Bedrooms: 24  
 4 night guide price per person from £754 Bed & Breakfast



**INTERLAKEN**  
Hotel Beausite ★★★

*Why we love this hotel...* as its name suggests, the hotel has wonderful views of the Jungfrau mountain from its terrace and large garden. Family-run for 3 generations and in the oldest part of Interlaken, the traditional chalet-style building houses a lounge as well as a bar for enjoying a drink after your days out in the region.

Family-run, welcoming hotel  
**B** | Standard room  
**A** | Superior: +£18pppn



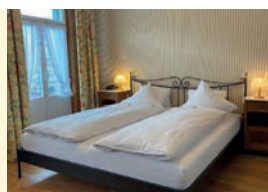
Available all year Bedrooms: 50  
 4 night guide price per person from £973 Bed & Breakfast  
 or from £1,152 Half Board (dinner at nearby restaurant)



**INTERLAKEN**  
Hotel Carlton Europe ★★★★★

*Why we love this hotel...* it is situated on the famous Höheweg in the heart of Interlaken. This Art Nouveau hotel comprises two separate historic buildings and features a wellness spa, and an outdoor swimming pond in the summer. There are two restaurants (one serving typically Swiss cuisine) and the cosy Kaminbar for fireside drinks. Minimum age 16.

Heart of Interlaken location  
**B** | Classic room  
**A** | Superior: +£34pppn  
 Special offers available



Available all year Bedrooms: 86  
 4 night guide price per person from £839 Bed & Breakfast  
 or from £1,040 Half Board (May-Sept only)



**INTERLAKEN**  
Hotel Stella ★★★★★

*Why we love this hotel...* Interlaken's smallest 4 star, with a very warm welcome from the family who run the hotel. Benefitting from a quieter location a short walk from the centre, the Stella has a small lounge bar; in fine weather you may like to enjoy your drink on the terrace with its pleasant garden. There is also a good sized indoor pool for guests.

Friendly hotel with an indoor pool  
**A** | Standard room with balcony  
 Special offers available



Available all year Bedrooms: 30  
 4 night guide price per person from £852 Bed & Breakfast  
 or from £1,040 Half Board (dinner at nearby Restaurant Schuh)



**INTERLAKEN**  
Hotel Interlaken ★★★★★

*Why we love this hotel...* located in the heart of town, Interlaken's oldest hotel is family-run and has been sympathetically renovated to create a fine establishment. In the Kloster lounge you can still see parts of the 14th century walls, while The Taverne restaurant specialises in modern Swiss cuisine. A sun terrace leads to the tranquil Japanese garden.

Offering delightful historic charm  
**B** | Standard room  
**A** | Superior: +£22pppn  
 Special offers available



Available all year Bedrooms: 61  
 4 night guide price per person from £857 Bed & Breakfast



**INTERLAKEN**  
Hotel Metropole ★★★★★

*Why we love this hotel...* simply unbeatable views over mountains. One of the comfortable Metropole's two restaurants is located on the top floor, allowing you to enjoy your meal amidst the spectacular views. The terrace has al fresco tables for dining on warm evenings, while the bar offers tempting cocktails. There is also a wellness area with a sauna.

The hotel with the best views in town  
**B** | Standard room (1st - 8th floor)  
**A** | Deluxe (9th to 14th floor):  
 +£39pppn



Available all year Bedrooms: 96  
 4 night guide price per person from £1,063 Bed & Breakfast  
 or from £1,309 Half Board

# Hotels

Personally selected for you

We have worked with the majority of these hotels for many years and can personally recommend them for a comfortable stay and a friendly welcome. Full hotel descriptions can be found on our website. We will use our expertise to find the ideal hotel for your stay; we also have access to hundreds more hotels across Switzerland, in case you don't see what you're looking for here.

Read more about the resort in which these hotels are located:

**INTERLAKEN** page 18

## Always included

### FLIGHTS + HOTELS + RAIL TO RESORT

- Flights London-Zurich or London-Geneva including taxes and hold baggage (other flights are available from around the UK)
- Rail travel to resort (2nd class)
- Hotel accommodation (based on 2 sharing) with breakfast, or breakfast & dinner
- Half Fare Card for reduced prices for days out on trains, boats and buses throughout Switzerland
- Interlaken Guest Card offering free bus and train travel around the local area
- Personalised, fully detailed itinerary sent with all tickets
- Financial protection ATOL 3148

## Upgrades and flexibility

Just let us know! Mountain view rooms add a magical touch to your holiday and are highly recommended.

Hotel guide prices shown are for 4 nights, but we can provide bespoke quotations for any duration.

# Popular

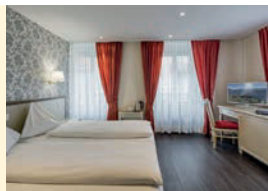




**INTERLAKEN**  
Hotel Du Nord ★★★★★

*Why we love this hotel...* ideally located on the famous Höhematte. The light and airy bedrooms are comfortably furnished and there is a plentiful buffet breakfast. Why not visit the stylish modern bar for your favourite cocktail after a day's sightseeing. Guests can take advantage of free entrance to the public pool and spa, a short walk from the hotel.

- Modern hotel in a central location**  
**C** | Standard north facing room  
**B** | Deluxe south facing: +£22pppn  
**A** | Superior with balcony: +£39pppn



**Available all year** Bedrooms: 55  
 4 night guide price per person from £1,058 Bed & Breakfast



**LUCERNE**  
Hotel Waldstätterhof ★★★★★

*Why we love this hotel...* perfectly located for exploring, being next to the rail & boat station and just 5 minutes' walk across the famous Chapel Bridge to the atmospheric Old Town. The hotel has a stylish, contemporary design throughout. The relaxed Gleis 1 restaurant is to be recommended, offering a modern twist on Lucerne and Swiss specialities.

- Relaxed atmosphere, great location**  
**B** | Comfort room  
**A** | Premium: +£12pppn  
 Special offers available



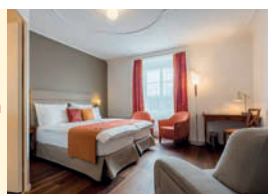
**Available all year** Bedrooms: 96  
 4 night guide price per person from £972 Bed & Breakfast  
 or from £1,124 Half Board



**LUCERNE**  
Hotel Des Alpes ★★★★★

*Why we love this hotel...* located in one of the oldest buildings on the Reuss riverbank, with a view of the Chapel Bridge & Mount Pilatus. Be sure to enjoy a meal at the Quaiterrasse, the modern restaurant and bar, or take in the view from the 1st floor balcony. The team at the historic Des Alpes even craft their own beer, well worth trying during your stay.

- An historic hotel with great views**  
**C** | Town view room  
**B** | Town view with balcony: +£25pppn  
**A** | River view with balcony: +£39pppn



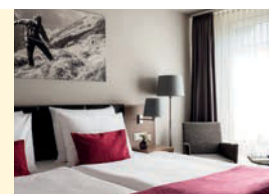
**Available all year** Bedrooms: 45  
 4 night guide price per person from £1,021 Bed & Breakfast



**LUCERNE**  
Hotel Flora ★★★★★

*Why we love this hotel...* a warm welcome awaits at the Flora with its chic, minimalist design. It enjoys a convenient position for the station, historic centre, and the lake. Treat yourself at the atmospheric Bacio Della Mamma, which features a contemporary Italian menu with delicious homemade pasta and stone-baked pizza; it's also a lively spot for a drink.

- Modern hotel with Italian restaurant**  
**B** | Standard room  
**A** | Deluxe: +£20pppn



**Available January - October** Bedrooms: 96  
 4 night guide price per person from £1,021 Bed & Breakfast



## LUCERNE

### Hotel Cascada ★★★★★

*Why we love this hotel...* its boutique bedrooms are individually styled around the theme of Swiss waterfalls and there are free soft drinks in the minibar. Well located close to the station and the Old Town, the hotel features the popular Bolero bar & restaurant with Spanish speciality dishes and wines. It is also known for its excellent buffet breakfast.

A stylish and comfortable hotel

C | Small room

B | Medium: +£25pppn

A | Large: +£39pppn



Available all year Bedrooms: 74

4 night guide price per person from £1,156 Bed & Breakfast



## LUCERNE

### Romantik Hotel Wilden Mann ★★★★★

*Why we love this hotel...* in the historic quarter, the unique Wilden Mann dates back to 1517. It is spread across 7 traditional town houses and the rooms feature charming antique furniture. The à la carte restaurant is popular with guests and locals alike and in fine weather there is dining on the terrace. Relax with an evening drink in the spacious lounge.

Historic hotel bursting with character

A | Superior room

Standard room available November to April

Special offers available



Available all year Bedrooms: 48

4 night guide price per person from £1,133 Bed & Breakfast or from £1,393 Half Board

# Hotels

## Personally selected for you

We have worked with the majority of these hotels for many years and can personally recommend them for a comfortable stay and a friendly welcome. Full hotel descriptions can be found on our website. We will use our expertise to find the ideal hotel for your stay; we also have access to hundreds more hotels across Switzerland, in case you don't see what you're looking for here.

Read more about the resorts in which these hotels are located:

**INTERLAKEN** page 18

**LUCERNE** page 20

## Always included

### FLIGHTS + HOTELS + RAIL TO RESORT

- Flights London-Zurich or London-Geneva including taxes and hold baggage (other flights are available from around the UK)
- Rail travel to resort (2nd class)
- Hotel accommodation (based on 2 sharing) with breakfast, or breakfast & dinner
- Half Fare Card for reduced prices for days out on trains, boats and buses throughout Switzerland
- Local cards offering free bus and train travel around the Interlaken & Lucerne areas
- Personalised, fully detailed itinerary sent with all tickets
- Financial protection ATOL 3148

## Upgrades and flexibility

Just let us know! River or mountain view rooms add a magical touch to your holiday and are highly recommended.

Hotel guide prices shown are for 4 nights, but we can provide bespoke quotations for any duration.

# Popular

 SWISS RESORTS

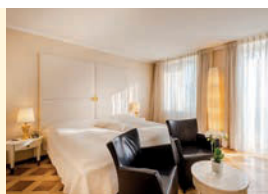


**LUCERNE**  
Hotel Des Balances ★★★★★

*Why we love this hotel...* it offers an elegant stay in a great position between the Old Town and the river, with views of Chapel Bridge. The building dates from the 13th century and its magnificent façade is a Lucerne landmark. The tastefully modernised interior boasts an exceptional restaurant, and the adjoining terrace is a joy with its wonderful views.

Fantastic location, historical charm

- B | Town view room
- A | River view: +£26pppn



Available all year Bedrooms: 56  
4 night guide price per person from £1,469 Bed & Breakfast

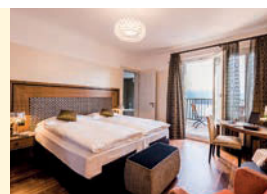


**LUCERNE**  
Art Deco Hotel Montana ★★★★★

*Why we love this hotel...* from its elevated position there are amazing views over the lake and the central Alps. Treat yourself to dinner in the Scala restaurant, enjoy a whisky in the jazz bar or sip cocktails in the stylish rooftop bar. The bedrooms and the excellent spa continue the art deco styling. A private funicular will transport you to the lakeside.

Top choice for an elegant holiday

- B | Hill view room
- A | Lake view with balcony: +£56pppn



Available all year Bedrooms: 61  
4 night guide price per person from £1,460 Bed & Breakfast



**MONTREUX**  
Hotel J5 Helvetie ★★★★★

*Why we love this hotel...* well situated close to the lakeside promenade, the J5 Helvetie is an ideal base for exploring the Swiss Riviera. Rooms are older in style while the J5 Brasserie is all modern chic and offers an excellent menu with international and Swiss cuisine. La Terrasse is a great spot for a drink in the summer months to admire the views of Lake Geneva.

Historic hotel with excellent cuisine

- A | Standard room
- Special offers available



Available all year Bedrooms: 63  
4 night guide price per person from £803 Bed & Breakfast

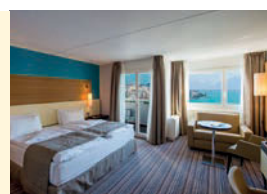


**MONTREUX**  
Hotel Mona ★★★★★

*Why we love this hotel...* its height affords unparalleled lake views, while the facilities make for a comfortable stay. The laidback Mona has a central location and offers a good choice of places in which to eat, drink and relax. One of the restaurants has a glass wall to make the most of the splendid views, and there are sun loungers on the terrace.

Guaranteed lake view rooms

- C | Cosy room with balcony
- B | Privilege with balcony: +£20pppn
- A | Panorama with balcony: +£41pppn



Available all year Bedrooms: 157  
4 night guide price per person from £998 Bed & Breakfast



## MONTREUX

### Edén Palace Au Lac ★★★★★

*Why we love this hotel...* it is a joy to stay in this Belle Époque hotel, combining tradition and elegance. In a great position on the lake, hotel guests also have use of the neighbouring Casino's outdoor pool and gardens with loungers - perfect for sunny days. Chez Gaston is the hotel restaurant with a French inspired menu and a waterside terrace for summer dining.

Enjoy cocktails overlooking the lake

**B** | Standard city view room

**A** | Deluxe lake view with balcony:  
+£11pppn



Available all year Bedrooms: 100

4 night guide price per person from £960 Bed & Breakfast  
or from £1,206 Half Board



## LAUSANNE

### Hotel Mirabeau ★★★★★

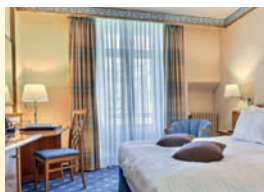
*Why we love this hotel...* it has a concept of 'slow living': an oasis of calm with a restful atmosphere and comfortable rooms, yet within easy reach of Lausanne's historical and waterfront areas. With art deco design touches and a recommended restaurant & summer terrace, this is a great base from which to discover the city and wider region.

Relax in this historic hotel

**C** | Standard room

**B** | Superior, garden view: +£16pppn

**A** | Superior, view to lake: +£35pppn



Available all year Bedrooms: 75

4 night guide price per person from £818 Bed & Breakfast  
or from £1,127 Half Board

# Hotels

Personally selected for you

We have worked with the majority of these hotels for many years and can personally recommend them for a comfortable stay and a friendly welcome. Full hotel descriptions can be found on our website. We will use our expertise to find the ideal hotel for your stay; we also have access to hundreds more hotels across Switzerland, in case you don't see what you're looking for here.

Read more about the resorts in which these hotels are located:

**LUCERNE** page 20

**MONTREUX** page 22

**LAUSANNE** page 24

## Always included

### FLIGHTS + HOTELS + RAIL TO RESORT

- Flights London-Zurich or London-Geneva including taxes and hold baggage (other flights are available from around the UK)
- Rail travel to resort (2nd class)
- Hotel accommodation (based on 2 sharing) with breakfast, or breakfast & dinner
- Half Fare Card for reduced prices for days out on trains, boats and buses throughout Switzerland
- Local cards offering free bus and train travel around the Lucerne, Montreux and Lausanne areas
- Personalised, fully detailed itinerary sent with all tickets
- Financial protection ATOL 3148

## Upgrades and flexibility

Just let us know! Lake or river view rooms add a magical touch to your holiday and are highly recommended.

Hotel guide prices shown are for 4 nights, but we can provide bespoke quotations for any duration.

# Popular

 SWISS RESORTS

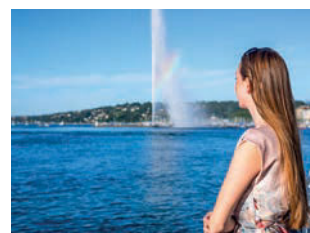


Lake Brienz

# Relaxing

 LAKESIDE HOLIDAYS

Ringed by imposing mountains, the sparkling Swiss lakes are renowned for their beauty. Visitors are sure to be enchanted by the breathtaking scenery: picture yourself on the sundeck of a lake cruiser, relaxing with a drink and taking in the views as you glide along the water for a few hours. There are some bigger resorts on the lakes - which you can read about on pages 18-25 - however the following pages are dedicated to quieter resorts and hotels which are perfect for waterside relaxation in beautiful settings.



## Lakes Thun & Brienz

These two lakes at the heart of the Bernese Oberland lie either side of Interlaken and are famed for their colours: deep blue on one side and turquoise on the other. Both have a stunning backdrop of the Jungfrau mountains and a relaxing day cruise is highly recommended to experience this magnificent view. Plan your timing for a cruise aboard a restored steamer: the SS Blümlisalp will take you to Lake Thun's picturesque castles and vineyards, while the SS Lötschberg gently glides past the Giessbach Falls on Lake Brienz.

*For a tranquil lakeside holiday, we recommend Spiez on Lake Thun or Bönigen on Lake Brienz*

Find more information on these pages:	Resort Information	Hotel Information
<b>Bönigen</b>	34-35	46
<b>Spiez</b>	36-37	46
<i>Liveliert resort: Interlaken</i>	18-19	26-28

## Lake Lucerne

The lake stretches from the historic resort of Lucerne through fjord-like fingers to eventually reach Flüelen, gateway to the high Alps. Lake Lucerne marks the very heart of Switzerland and is the setting for the William Tell legend; you will certainly find plenty of historical charm in the region. The nearby mountains are well worth visiting via the network of cable cars for scenic walks and views. Maybe cruise there on one of the nostalgic paddle steamers ... sit back, relax and admire the sparkling water in all its glory.

*For a picturesque Lake Lucerne holiday, we recommend Weggis or Brunnen*

Find more information on these pages:	Resort Information	Hotel Information
<b>Weggis</b>	38-39	47-48
<b>Brunnen</b>	38-39	47
<i>Liveliert resort: Lucerne</i>	20-21	28-30





Lake Geneva

## Lake Geneva

Switzerland's largest lake boasts a mild climate and has historic vineyards stretching along its scenic shoreline. Take a day cruise along the length of the lake via Lausanne and you will be surprised by the changing scenery - from the snowcapped Alps to sunny vines and pleasant villages, from waterside statues of residents Charlie Chaplin and Freddie Mercury to the Jet d'Eau in Geneva. The vast splendour of the water and the majesty of the mountains make for an unforgettable backdrop to your relaxing stay in the region.

*For a peaceful Lake Geneva holiday, we recommend Vevey or La Tour-de-Peilz*

Find more information on these pages:	Resort Information	Hotel Information
<a href="#">Vevey</a>	40-41	48
<a href="#">La Tour-de-Peilz</a>	40-41	48
<i>Livelier resorts: <a href="#">Montreux</a> or <a href="#">Lausanne</a></i>	22-23 24-25	30-31 31

## Lake Maggiore and Lake Lugano

The lakes of Ticino, where Switzerland meets Italy, offer some of the country's most beautiful views. Thanks to the gloriously mild climate, there are palm trees and an array of brightly coloured flowers lining the shores. Why not take a funicular or cable car up to the local mountains and enjoy the vistas over the azure water, or cruise to an idyllic village for a relaxing lunch. Enjoy la dolce vita – great food, charming boutiques and the opportunity for an evening passeggiata along the lakeside promenade.

*For a relaxing lakeside holiday, we recommend Locarno and Ascona on Lake Maggiore or Lugano on Lake Lugano*

Find more information on these pages:	Resort Information	Hotel Information
<a href="#">Ascona</a>	42-43	49
<a href="#">Locarno</a>	42-43	50
<a href="#">Lugano</a>	44-45	50-51



## Lakeside walking

All resorts have a lakeside path where you can enjoy a scenic stroll by the water's edge. Some lead further on to other towns and villages where you might like to find a café for a quiet drink with a splendid view. The Swiss Trail is a famous path following a large section of Lake Lucerne - you can explore a section of it for a couple of hours, or follow the whole trail over a few days.

## Freshwater swimming

Our lakeside resorts all have access to a nearby lido, where you can take a dip in the clear water fed by the mountains above. Strike out a little from the shore and look up and around you for a spectacular view. The lidos have changing facilities, bar and restaurants, and in some cases even a sandy beach area.



# Bönigen

A relaxing holiday on the very water's edge with beautiful views

Fly to Zurich under 2hrs  
2 hr 15 mins rain transfer to Interlaken.  
Private transfer Interlaken - Bönigen  
Geneva flights also available

**Bönigen** is a tranquil, relaxing village on Lake Brienz. Our hotel here has a fantastic position on the shore, so you will have idyllic views. As Bönigen is only 10 minutes on the regular bus service from Interlaken, a stay here combines all the benefits of an excellent transport hub with the quieter charm of the flower-decked lakeside setting.



## Cruise the waters of beautiful **Lake Brienz** with spectacular scenery en route

Lake Brienz boats operate April to October

*Buy a day ticket for Lake Brienz and spend an unforgettable day relaxing on board and exploring the pretty villages around the lake. Culinary cruises are available on selected dates.*

The first thing you'll notice is the water is an amazing turquoise: coloured by minerals washed into the lake by glacial streams. A cruise from Bönigen takes you all the way to Brienz, past lidos and waterfalls including the Giessbach falls close to a romantic hotel perched on the rocks. Why not disembark at Iseltwald or Brienz for a gentle stroll and a coffee before boarding a later boat to continue your round trip. Time your departure carefully and you could be cruising on the restored paddle steamer MS Lötschberg.





## Not to be missed Climb aboard the Brienz Rothorn nostalgic steam cog railway

2,350m - May to October

*A great day out from Bönigen with a choice of travel to Brienz by train or boat to join this wonderful railway opened in 1892. The cogwheel train chugs its way to Brienz Rothorn where you have incredible views over an amazing panorama of 693 mountain peaks. There are great walks and - to help you linger awhile - a mountain restaurant serving refreshments and lunch. We recommend booking a timed ticket to avoid possible queues.*



## Getting around

Complimentary **Interlaken Card** from Bönigen offers free local bus travel. Bönigen has excellent rail and boat connections: enjoy discounted excursions with the **Half Fare Card** which is included in your price. If you like to be out exploring, we recommend the **Bernese Oberland Pass** which covers UNLIMITED free journeys on a huge range of rail, lake steamers, scenic mountain railways and cable cars. You also benefit by bypassing queues at the ticket offices.

## Other excursions from Bönigen

- Männlichen peak with great walks - half day
- Full day to visit historic Bern
- Jungfrauoch-Top of Europe - unforgettable full day
- Half day to Harder Kulm with view over the lakes

## Two centre scenic rail holidays

This resort works well with the GoldenPass Express, the Lucerne-Interlaken Express and the Lötschberg Regio Express - see page 12.



## Ballenberg - step into living history

Open April to October

*A half day excursion in a unique setting. Rural Ballenberg is an open air museum, showcasing Swiss life as it once was. Wander around the century-old farmhouses with their vegetable gardens for a vivid impression of the Switzerland of yore. There are around 250 farmyard animals grazing in the rich pastures - and a restaurant if you should feel hungry yourself. Fascinating traditional craft demonstrations include wood carving, cheese making and embroidery.*

## Always included

FLIGHTS + HOTELS + RAIL TO RESORT

**PLUS!** The fantastic **Half Fare Card** which gives you heavily discounted prices for all your excursions from Bönigen. We are fully bonded with ATOL for your financial protection.

## Holiday suggestions

- **7 nights Bönigen with Half Fare Card**  
Full day Brienz Rothorn, full day Jungfrauoch, half day Harder Kulm, full day visiting Lucerne
- **4 nights in Bönigen and 3 nights in Lucerne**  
Luzern-Interlaken Express two lakes holiday

Choose your hotel... Our selected 4 star hotel is featured on page 46

# Relaxing

 LAKESIDE HOLIDAYS



# Spiez

Charming lakeside living with access to the stunning high Alps

Fly to Zurich under 2 hrs  
1 hr 50 mins train transfer  
Geneva flights also available

A stunning village on Lake Thun, **Spiez** is dominated by its picturesque castle perched on the slopes rising from the lake. It is surrounded by hillside vineyards and offers lovely views over the water to the Bernese Alps. Spiez has excellent connections for exploring the region, with a railway hub and a boat station for cruises on the waters of Lake Thun.



A leisurely cruise on historic **Lake Thun** with a glorious mountain backdrop to enjoy

Lake Thun boats operate all year round

*Buy a day ticket and relax on board as the lake steamer criss-crosses the lake for its full journey of over 2 hours each way between Interlaken and Thun.*



Hop off to explore the picturesque lakeside villages and one of the many castles such as Thun, Oberhofen and Hünegg as well as Spiez. Or stop at Beatenbucht to take the funicular and cable car to the Niederhorn (this may be worth a day on its own). Time your journey to include lunch on board; it is also worth considering opting for first class - always situated on the top deck for the best views. There are also cruises on scenic Lake Brienz.



## Not to be missed the **Stockhorn mountain with its panoramic summit views**

2,190m – May to February

*A memorable half day to the Stockhorn mountain which is found in the lush Simmental region, around an hour from Spiez. Take the cable car from Erlenbach to the summit which lies at 2,190m above sea level. Once at the top, you can enjoy magnificent views of over 200 mountain peaks in the high Alps and beyond. As well as relaxing in the restaurant with its sun terrace, you can walk through a 70m tunnel leading to a 'grotto' in the north wall which has viewing windows to see Thun, the lakes, and the River Aare.*

## Getting around

Complimentary **Lake Thun Panorama Card** from Spiez offers free local bus travel. Spiez has excellent rail and boat connections: enjoy discounted excursions with the **Half Fare Card** which is included in your price. If you like to be out exploring, we recommend the **Bernese Oberland Pass** which covers UNLIMITED free journeys on a huge range of rail, lake steamers, scenic mountain railways and cable cars. You also benefit by bypassing queues at the ticket offices.

## Other excursions from Spiez

- Half day to the pyramid Mount Niesen
- St. Beatus caves and cable car to Niederhorn – full day
- Visit pretty Kandersteg – half day
- Schilthorn-Piz Gloria & revolving restaurant – full day

## Two centre scenic rail holidays

This resort works well with the GoldenPass Express, the Lucerne-Interlaken Express and the Lötschberg Regio Express – see page 12.



## Harder Kulm – Views down to the lakes

1,322m - All year

*Half day visit. Take the funicular from Interlaken for an incredible vista from the viewing platform over the lakes and across to the Eiger, Mönch and Jungfrau mountains. Walking trails are excellent and the picturesque panoramic restaurant is a great choice for lunch.*

## Always included

FLIGHTS + HOTELS + RAIL TO RESORT

**PLUS!** The fantastic **Half Fare Card** which gives you heavily discounted prices for all your excursions from Spiez. We are fully bonded with ATOL for your financial protection.

## Holiday suggestions

- **7 nights Spiez with 6 day Bernese Oberland Pass**  
Full day Lake Thun, full day Bern, full day to Gstaad, half day Stockhorn, half day Harder Kulm
- **4 nights in Spiez and 3 nights in Montreux**  
Unforgettable GoldenPass Express two centre holiday

Choose your hotel... Our selected 3 and 4 star hotels are featured on page 46

# Relaxing

 LAKESIDE HOLIDAYS

# Weggis & Brunnen



CENTRAL SWITZERLAND

Idyllic settings on Lake Lucerne, surrounded by dramatic mountains

Fly to Zurich under 2 hrs

2 hr 15 mins train & boat to Weggis

1 hr 20 mins train transfer to Brunnen

Geneva flights also available

Picture yourself strolling beside the lapping water of one of Switzerland's most beautiful lakes on your way to a relaxing coffee, or heading to the pier to embark on a lake steamer at the start of another day exploring this unforgettable scenery. **Weggis** and **Brunnen** are both situated on Lake Lucerne with Mount Rigi just a cable car ride away.



Brunnen

**Mount Rigi** a real jewel with wonderful railways & cable cars, walking, and views too impressive to photograph!

1,797m - All year

*A full day out.* Start your journey by cable car from Weggis or lake boat to Vitznau cog railway to enter the 'world of Mount Rigi' with stunning walks, restaurants and railways to Rigi Kulm.

Come and discover why Mount Rigi is one of the most popular mountains. It is a mountain for all seasons and its peninsula location enables you to enjoy Rigi's impressive and renowned panoramic views from a variety of walking trails to suit everyone. Stay awhile and enjoy spectacular views from sun-kissed terraces and soak up the alpine atmosphere from the vast Rigi area which has many fabulous restaurants to suit every taste, from fine dining dishes to simple snacks.





## Not to be missed **A cruise around beautiful Lake Lucerne, the birthplace of Switzerland**

Operates all year

*A leisurely half day.* Lake Lucerne is an exceptionally beautiful lake and from Weggis you could do a four hour round trip to Flüelen. There is excellent catering on board for refreshments or lunch; first class travel on the upper deck may be your preference for the best views. As you meander across the lake between picturesque villages and past dramatic mountains, look out for Rütli Meadow (where the first three cantons of Switzerland came together in 1291) and the birthplace of the William Tell legend. From Brunnen we suggest a stunning two hour cruise each way to Lucerne.

## Getting around

Weggis and Brunnen have excellent bus and boat connections (Brunnen also has rail). Enjoy discounted excursions with the **Half Fare Card** which is included in your price. If you like to be out exploring, we recommend the **Tell Pass** which covers UNLIMITED free journeys on a huge range of rail, lake steamers, scenic mountain railways and cable cars. You also benefit from bypassing queues at the ticket offices.

## Other excursions from Weggis & Brunnen

- Lucerne – half day in the historic Old Town
- Pilatus mountain – half day with mountain activities & views
- Klewenalp – half day, cable car with great walks
- Bürgenstock – half day sunny plateau overlooking the lake

## Two centre scenic rail holidays

These resorts work well with the Gotthard Panorama Express, the Luzern-Interlaken Express and the GoldenPass Express – see page 12.



## Stanserhorn – Cable car with open upper deck

1,898m - April to November

*Half day visit.* Take the lake steamer to Stans where you connect with the funicular and then cable car to Stanserhorn. Walking trails are excellent and the views of Central Switzerland stretch to over 100km of awe-inspiring mountain ranges. The picturesque revolving restaurant is a great choice for your lunch.

## Always included

FLIGHTS + HOTELS + RESORT TRANSFERS

**PLUS!** The fantastic **Half Fare Card** which gives you heavily discounted prices for all your excursions from Weggis and Brunnen. We are fully bonded with ATOL for your financial protection.

## Holiday suggestions

- **7 nights Weggis or Brunnen with 6 day Tell Pass**  
Full day Lake Lucerne, full day to Mount Rigi, half day Stanserhorn, half day Klewenalp, half day Stoos, half day Pilatus
- **4 nights in Weggis or Brunnen and 3 nights in Montreux**  
Tremendous GoldenPass Express two centre holiday

Choose your hotel... Our selected 3 and 4 star hotels are featured on pages 47-48

# Relaxing

 LAKESIDE HOLIDAYS



# Vevey & La Tour-de-Peilz

Relax on the 'Swiss Riviera' and enjoy these delightful resorts

Fly to Geneva under 2 hrs  
1 hr train transfer to Vevey. Private transfer Vevey - La Tour-de-Peilz  
Zurich flights also available

Situated on Lake Geneva - Switzerland's largest lake and certainly one of its most beautiful - **Vevey** and **La Tour-de-Peilz** are attractive, quieter alternatives to Montreux. There is a lakeside promenade connecting the small tranquil village of Tour-de-Peilz with Vevey, the town which Charlie Chaplin made his home. Visit his 'Manoir' during your stay, now an excellent museum.



Vevey



La Tour-de-Peilz

## A relaxing two hour **pleasure cruise** past the Lavaux terraced vineyards

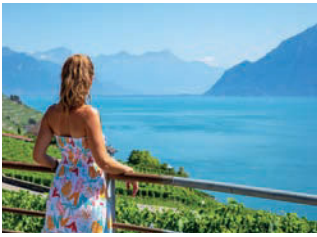
Operates April to October

*Half day round trip from Vevey to Lausanne. Enjoy the views as you pass the UNESCO World Heritage Site of the Lavaux terraced vineyards.*

This section of Lake Geneva boasts what is considered to be its best scenery and the most spectacular backdrops, with views over to the French Alps and Mont Blanc. The cruise slowly passes the charming Swiss wine villages of the Lavaux region. The picturesque vineyards date back to the 11th century, when Benedictine and Cistercian monasteries developed the terraces to produce highly valued wine. Refreshments are also available on board; relaxing in first class on the upper deck may be your preference.







## Not to be missed **Charlie Chaplin Swiss Riviera manor house and gardens**

Open all year

*Half day trip.* Charlie Chaplin lived for the last 25 years of his life in his beloved Switzerland. His former home, Le Manoir de Ban is dedicated to his life and work. Meet the family man and discover his fascinating life, from a childhood in London's poverty-stricken East End, to his legendary work as an actor and his quieter final years in this idyllic location - an impressive ten-acre estate where you can enjoy superb views of Lake Geneva.

## Getting around

Our holidays include the **Montreux Riviera Card** offering FREE travel on public transport in the area. Vevey and La Tour-de-Peilz have excellent rail and boat connections - enjoy further discounted excursions with the **Half Fare Card** which is also included in your price. If you like to be out exploring, we recommend upgrading to the **Swiss Travel Pass** which covers UNLIMITED free journeys on Switzerland's main railways and lake steamers. You also benefit from bypassing queues at the ticket offices.

## Other excursions from Vevey and La Tour-de-Peilz

- Montreux and Chillon Castle of Lord Byron fame, full day
- Les Rochers-de-Naye - half day with spectacular views and walks
- Gstaad via GoldenPass Express, full day to the chic alpine resort
- Geneva - full day exploring the city by the lake

## Two centre scenic rail holidays

These resorts work well with the GoldenPass Express and Glacier Express - see page 12.



## Mont Pèlerin - Splendid lake views

810m - All year

*Half day visit from Vevey.* A delightful funicular railway takes 11 mins from Vevey through the vineyards to the village of Mont-Pèlerin where you can soak up the views from the terrace of the *Hôtel Mirador*. It's an hour's walk to the *Plein Ciel panoramic lift* for even more amazing views (lift open April - November).

## Always included

FLIGHTS + HOTELS + RAIL TO RESORT

**PLUS!** The fantastic **Half Fare Card** which gives you heavily discounted prices for all your excursions from Vevey and La Tour-de-Peilz. We are fully bonded with ATOL for your financial protection.

## Holiday suggestions

- **7 nights Vevey or La Tour-de-Peilz with Half Fare Card**  
Half day lake cruise to Lausanne, full day Geneva, full day to Gstaad, half day Les Rochers-de-Naye, half day Charlie Chaplin museum
- **4 nights in Vevey or La Tour-de-Peilz and 3 nights in Lucerne**  
GoldenPass Express two lakes holiday

Choose your hotel... Our selected 3 and 4 star hotels are featured on pages 48-49

# Relaxing

 LAKESIDE HOLIDAYS



# Locarno & Ascona

Welcome to the sunshine of southern Switzerland and Lake Maggiore

Fly to Zurich under 2 hrs  
2 hr 30 mins train transfer to Locarno  
Private transfer Locarno - Ascona

You will find the warm Italian influence in these two contrasting lakeside resorts. **Locarno** offers the vibrance and style of a small town at the centre of great local excursions, whilst just a short bus ride away **Ascona** sits quietly on the shore. Discover its charming restaurants and a maze of historic, boutique-lined streets.



Ascona

Enjoy an exceptional scenic rail journey on the **Centovalli Line** to the Italian town of Domodossola

Operates all year

*Allow a full day trip with time for lunch in Italy. Your incredible two hour journey across the border starts from Locarno travelling through the Centovalli (hundred valleys) region.*

Your historic blue train travels slowly along this alpine railway as it twists and turns through beech woods clinging to jagged mountains with views to the rivers and waterfalls below. You travel through over twenty small villages and after the Swiss village of Camedo you enter the Italian half of the journey, finishing with a dramatic descent into the valley at Domodossola. Take time to explore this historic Italian town and enjoy lunch before your return journey to Locarno.





## Not to be missed **A cruise to Brissago Islands subtropical paradise with stunning blooms**

April to October

*Treat yourself and experience a day of tranquillity as you board a lake boat at Locarno or Ascona for the short journey to the Brissago Islands. The warm climate in the region allows plants from Asia, the Americas and the Mediterranean to thrive with a wonderful array of subtropical plants including azaleas, rhododendrons, palm trees, camellias, magnolia, agaves, cacti, cypress and many more. Enjoy a relaxed lunch at the elegant restaurant and terrace with views over the lake.*

## Getting around

Our holidays include the great **Ticino Ticket** offering FREE unlimited travel on public transport in the area. By showing this ticket you can easily use the local bus and trains including to Lugano and Bellinzona. You also enjoy discounted excursions with the **Half Fare Card** which is included in your price.

## Other excursions from Locarno and Ascona

- Madonna Del Sasso – half day, mountain sanctuary with views
- Bellinzona and its three historical castles. Full day
- Lugano – lively lakeside town, half day
- Monte Tamaro – full day with plenty of activities

## Two centre scenic rail holidays

These resorts work well with the Treno Gottardo, Gotthard Panorama Express and Bernina Express - see page 12.



## Cardada cable car and Cimetta chair lift – Stunning views and walks

1,670m January to October

*Half day. Funicular to Orselina and cable car to Cardada which offers wonderful views over the lake from the panoramic observation platform. Enjoy a variety of walks from here and of course a friendly restaurant. You can continue by chairlift to Cimetta - worth it for the stunning views over the high Alps.*

## Always included

FLIGHTS + HOTELS + RAIL TO RESORT

**PLUS!** The fantastic **Half Fare Card** which gives you heavily discounted prices for all your excursions from Locarno and Ascona. We are fully bonded with ATOL for your financial protection.

## Holiday suggestions

- **7 nights Locarno or Ascona**  
Half day Brissago Islands, full day Bellinzona, full day on the Centovalli Line to Domodossola, half day Cardada and Cimetta
- **4 nights in Locarno or Ascona and 3 nights in Weggis**  
Relaxing Treno Gottardo two centre lakes holiday

Choose your hotel... Our selected 3 and 4 star hotels are featured on pages 49-50

# Relaxing

 LAKESIDE HOLIDAYS



TICINO

# Lugano

Relax under the blue skies of this lakeside town with its Italian way of life

Fly to Zurich under 2 hrs  
2 hr 15 mins train transfer,  
including the Gotthard tunnel

Sit back with an apéritif and enjoy the vistas of the blue lake and the mountains behind. The chic town of **Lugano** - more Italian than Swiss - offers sophisticated shopping, an historic centre and wonderful cuisine. There are great trips on the lake, a choice of two local mountains served by funiculars and free travel to other local towns.



## A gentle start to the day with a **lake cruise to a choice of delightful destinations**

April to October

*From Lugano spend a half day or longer with time to wander through the lakeside villages of Morcote or Gandria, stay for lunch and make this a special day to remember.*

A lake cruise is the perfect way to explore the beauty of the region - relax on board and enjoy the spectacular scenery. You could visit picturesque Morcote with its stately patrician houses and the Santa Maria del Sasso Church, an important renaissance building at a unique panoramic location, or Gandria, the epitome of a quaint little fishing village rising from the shores of Lake Lugano.

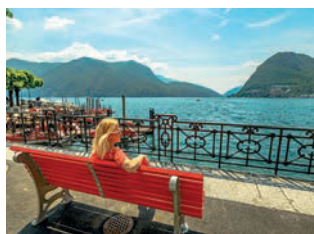




## Not to be missed **A visit to one of Lugano's local mountains**

Monte Brè 933m - All year, Monte San Salvatore 912m April to October

*Half day visit from Lugano.* Soak up the sights from the heights above Lugano, which boasts two outstanding mountains standing guard over the town. Monte San Salvatore is easily reached from Lugano Paradiso and here you can enjoy breathtaking views of Lake Lugano and the higher Swiss Alps. Linger a while and try the restaurant with a beautiful panoramic terrace. The Monte Brè funicular from Lugano takes 20 minutes and again has unforgettable views and lovely terraced restaurants. Both a photographer's dream!



## Getting around

Our holidays include the great **Ticino Ticket** offering FREE unlimited travel on public transport in the area. By showing this ticket you can easily use the local bus and trains including to Locarno, Ascona and Bellinzona. You also enjoy discounted excursions with the **Half Fare Card** which is included in your price.

## Other excursions from Lugano

- Locarno – half day in the historic Old Town
- Ascona – picture perfect lakeside village, half day
- Monte Generoso – full day in the higher mountains
- Swissminiatur – half day to the model village near lakeside Melide

## Two centre scenic rail holidays

Lugano works well with the Gotthard Panorama Express and the Bernina Express – see page 12.



## Take a look at **Bellinzona** – Historic regional capital and gateway to the Alps

All year

*A full day visit, Bellinzona is dominated by three fantastically preserved medieval castles which are recognised by UNESCO as a World Heritage Site. Apart from the castles, the town is worth exploring in its own right, with plenty of shops, restaurants and a market on Saturday mornings.*

## Always included

**FLIGHTS + HOTELS + RAIL TO RESORT**

**PLUS!** The fantastic **Half Fare Card** which gives you heavily discounted prices for all your excursions from Lugano. We are fully bonded with ATOL for your financial protection.

## Holiday suggestions

- **7 nights Lugano**  
Half day cruise, full day Bellinzona, half day Monte Brè, half day San Salvatore, half day to Ascona
- **4 nights in Lugano and 3 nights in St. Moritz**  
Incredible Bernina Express two centre holiday

Choose your hotel... Our selected 3 and 4 star hotels are featured on pages 50-51

# Relaxing

 **LAKESIDE HOLIDAYS**



**BÖNIGEN**  
Hotel Seiler au Lac ★★★★★

*Why we love this hotel...* family-run & offering true Swiss hospitality in a quiet position on the lakeside, yet only 8 minutes from Interlaken. The hotel has an excellent reputation for its cuisine, served in the attractive restaurant with lake views. A popular pizzeria, cosy bar, terrace, and a relaxing garden complete the facilities. Station transfers included.

Outstanding views of Lake Brienz  
**B** | Garden view room with balcony  
**A** | Lake view with balcony: +£25pppn  
 Special offers available



Available March - November Bedrooms: 42  
 4 night guide price per person from £928 Bed & Breakfast  
 or from £1,040 Half Board (breakfast only on Mondays)



**SPIEZ**  
Hotel Seegarten Marina ★★★

*Why we love this hotel...* it's difficult to imagine a more idyllic setting than the lakeside in Spiez, close to the boat station. This family-run hotel offers a relaxed atmosphere and guests can dine à la carte in the hotel restaurant, where fish from the lake is a specialty. The terrace, pizzeria and bar are popular meeting places. Station transfers included.

Idyllic setting on Lake Thun  
**B** | Castle view room  
**A** | Lake view with balcony: +£18pppn  
 Special offers available



Available all year Bedrooms: 47  
 4 night guide price per person from £795 Bed & Breakfast



**SPIEZ**  
Hotel Eden ★★★★★

*Why we love this hotel...* the Eden offers wonderful views and is just a short walk to the lakeside. There is a stylish Belle Époque restaurant, while the lounge is perfect for enjoying an apéritif with views across the lake. Bedrooms are equally elegant and the large wellness area, tennis court and relaxing gardens vie for your attention. Station transfers included.

Lakeside elegance and relaxation  
**C** | Comfort village view room  
**B** | Comfort lake view: +£45pppn  
**A** | Superior village view: +£62pppn  
 Special offers available



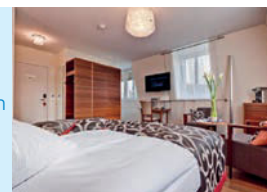
Available all year Bedrooms: 45  
 4 night guide price per person from £1,124 Bed & Breakfast  
 or from £1,437 Half Board



**SPIEZ**  
Belvédère Strandhotel ★★★★★

*Why we love this hotel...* impressive facilities and a breathtaking view of the Spiez Bay and Lake Thun. Just a short walk from the water's edge with a private lido, the hotel also offers an infinity pool and spa facilities. In the summer you can dine on the terrace and enjoy the panorama. The Captain's Bar also has great views with your cocktail. Station transfers included.

Splendid lake location and facilities  
**C** | Standard lakefront room  
**B** | Boutique mountain view: +£25pppn  
**A** | Panorama lake view: +£41



Available all year Bedrooms: 56  
 4 night guide price per person from £1,071 Bed & Breakfast  
 or from £1,379 Half Board



## BRUNNEN

### Hotel Schmid & Alfa ★★★

*Why we love this hotel...* small & friendly, in a superb position on the lake with views to the Alps. The hotel comprises the atmospheric and historic Schmid building and the modern Alfa, whose breakfast is served in a room overlooking the lake. The sunny terrace – complete with palm trees – is perfect for a relaxing drink at the day's end. Station transfers included.

Ideal for exploring Lake Lucerne  
**A** | Lake view room with balcony  
 Special offers available



Available March - October Bedrooms: 28

4 night guide price per person from £833 Bed & Breakfast



## WEGGIS

### Romantik Hotel Beau Rivage ★★★★★

*Why we love this hotel...* exceptional cuisine, in a great position next to the lake. The hotel's restaurant specialises in classic French and international cuisine and in summer it is possible to dine on the lakeside terrace. Facilities include a lounge, bar and a small, delightful spa with whirlpool and a heated outdoor swimming pool. Boat station transfers included.

Excellent dining, lakeside pool  
**D** | Mountain view room  
**C** | Lake view: +£48pppn  
**B** | Superior lake view: +£73pppn  
**A** | Deluxe lake view, balcony: +£120pppn



Available March - October Bedrooms: 41

4 night guide price per person from £953 Bed & Breakfast or from £1,258 Half Board

# Hotels

## Personally selected for you

We have worked with the majority of these hotels for many years and can personally recommend them for a comfortable stay and a friendly welcome. Full hotel descriptions can be found on our website. We will use our expertise to find the ideal hotel for your stay; we also have access to hundreds more hotels across Switzerland, in case you don't see what you're looking for here.

Read more about the resorts in which these hotels are located:

**BÖNIGEN** page 34

**SPIEZ** page 36

**BRUNNEN & WEGGIS** page 38

## Always included

### FLIGHTS + HOTELS + RESORT TRANSFERS

- Flights London-Zurich or London-Geneva including taxes and hold baggage (other flights are available from around the UK)
- Rail (or rail & boat) travel to resort (2nd class)
- Station transfer to hotel where stated
- Hotel accommodation (based on 2 sharing) with breakfast, or breakfast & dinner
- Half Fare Card for reduced prices for days out on trains, boats and buses throughout Switzerland
- Local cards offering free bus and train travel around the Bönigen and Spiez areas
- Personalised, fully detailed itinerary sent with all tickets
- Financial protection ATOL 3148

## Upgrades and flexibility

Just let us know! Lake view rooms add a magical touch to your holiday and are highly recommended.

Hotel guide prices shown are for 4 nights, but we can provide bespoke quotations for any duration.

# Relaxing

 LAKESIDE HOLIDAYS



## WEGGIS

### Hotel Alexander ★★★★★

*Why we love this hotel...* for the fantastic Vitalis spa facilities. Located on the lake on the outskirts of Weggis, the hotel has an indoor pool, herbal & rose steam baths, sauna, and a waterbed relaxation room. In summer the heated outdoor pool, landscaped gardens & private beach are a delight, as is the terrace for al fresco dining. Boat station transfers included.

#### Superb spa with lake views

- C | Standard room
  - B | Lake view with balcony: +£40pppn
  - A | Superior lake view with balcony: +£53pppn
- Special offers available



Available all year Bedrooms: 45

4 night guide price per person from £834 Bed & Breakfast or from £1,080 Half Board



## WEGGIS

### Hotel Gerbi ★★★★★

*Why we love this hotel...* a cosy and romantic setting on the shore of Lake Lucerne: enjoy pure relaxation in the tranquillity just outside Weggis. Fresh lake fish are served in the restaurant, which also has a terrace with great views. There is a picturesque lake bathing area and Gerbi guests may use the neighbouring Vitalis Spa. Boat station transfers included.

#### Lakeside setting with great dining

- B | West facing superior room with small balcony
  - A | Superior lake view with balcony: +£19pppn
- Special offers available



Available all year Bedrooms: 25

4 night guide price per person from £968 Bed & Breakfast or from £1,214 Half Board



## VEVEY | LA TOUR-DE-PEILZ

### Hotel Bon Rivage ★★☆☆

*Why we love this hotel...* beautifully situated with wonderful views over Lake Geneva in La Tour-de-Peilz, with direct access to the lake and a promenade to Vevey a gentle stroll away. The historic hotel offers tranquillity and its renowned restaurant 'garden by the lake' uses home grown ingredients in season. Station transfers included.

#### Charming lakeside village location

- C | Standard room
- B | Lake view: +£20pppn
- A | Lake view with balcony: +£34pppn



Available all year Bedrooms: 52

4 night guide price per person from £814 Bed & Breakfast or from £993 Half Board



## VEVEY

### Hotel Astra ★★★★★

*Why we love this hotel...* a very comfortable base from which to explore the Swiss Riviera. Situated in the centre of town, the Astra is a family-run, modern hotel with excellent facilities. There is the City Panoramic Spa, and a choice of restaurants and bars. A highlight is the popular rooftop sundeck, with great views of Vevey and the Lavaux vineyards.

#### A stylish stay in the heart of Vevey

- B | Standard room
- A | Superior: +£28pppn



Available all year Bedrooms: 100

4 night guide price per person from £1,020 Bed & Breakfast





## ASCONA

### Albergo Carcani Hotel ★★★

*Why we love this hotel...* it has a fantastic lakeside position in pretty Ascona. All rooms are air conditioned and the hotel is decorated with bright colours and Mediterranean flair. The Italian style restaurant and pizzeria is very popular and has an inviting terrace next to the water, where hotel guests receive a 10% discount.

#### Family-run waterfront hotel

C | Village view room

B | Lake view: +£10pppn

A | Lake view with balcony: +£25pppn



Available all year Bedrooms: 29

4 night guide price per person from £935 Bed & Breakfast



## ASCONA

### Romantik Hotel Castello Seeschloss ★★★★★

*Why we love this hotel...* brimming with history & charm and located in a prime position on the lakeside. This unique property offers a high standard of air conditioned accommodation and an outdoor pool. A meal in the restaurant's lakeside garden with its glorious views will be a memory to treasure. A family-run hotel, with station transfers included.

#### Uniquely charming lakeside hotel

C | Standard room

B | Superior: +£55pppn

A | Medieval tower, lake view:  
+£127pppn

Special offers available



Available March - October Bedrooms: 40

4 night guide price per person from £1,011 Bed & Breakfast or from £1,225 Half Board

# Hotels

## Personally selected for you

We have worked with the majority of these hotels for many years and can personally recommend them for a comfortable stay and a friendly welcome. Full hotel descriptions can be found on our website. We will use our expertise to find the ideal hotel for your stay; we also have access to hundreds more hotels across Switzerland, in case you don't see what you're looking for here.

Read more about the resorts in which these hotels are located:

**WEGGIS** page 38

**VEVEY** page 40

**ASCONA** page 42

## Always included

### FLIGHTS + HOTELS + RESORT TRANSFERS

- Flights London-Zurich (and London-Geneva for Weggis & Vevey) including taxes and hold baggage (other flights are available from around the UK)
- Rail (or rail & boat) travel to resort (2nd class)
- Rail/boat station transfer to hotel where stated
- Hotel accommodation (based on 2 sharing) with breakfast, or breakfast & dinner
- Half Fare Card for reduced prices for days out on trains, boats and buses throughout Switzerland
- Local cards offering free bus and train travel around the Vevey & Ascona areas
- Personalised, fully detailed itinerary sent with all tickets
- Financial protection ATOL 3148

## Upgrades and flexibility

Just let us know! Lake view rooms add a magical touch to your holiday and are highly recommended.

Hotel guide prices shown are for 4 nights, but we can provide bespoke quotations for any duration.

# Relaxing





**LOCARNO**  
Hotel Geranio au Lac ★★★

*Why we love this hotel...* it overlooks sparkling Lake Maggiore and is conveniently located for the station and town centre. Take advantage of the bicycles which the hotel lends free of charge for leisurely rides along the lake shore. Our rooms are all air conditioned, with a lake view from your balcony. Evening meals can be taken at the Mama Mia restaurant next door.

Enjoy breakfast with a lake view

- B | Room with balcony and side lake view
  - A | Lake view with balcony: +£6pppn
- Special offers available



Available March - October Bedrooms: 42  
4 night guide price per person from £858 Bed & Breakfast or from £1,059 Half Board (dinner at next door restaurant)



**LOCARNO**  
Hotel Belvedere ★★★★★

*Why we love this hotel...* perfect relaxation, great food and amazing views. The Belvedere is situated in gardens on a sunny hill overlooking Locarno and offers an array of facilities to make your holiday special. There is an elegant bar, restaurant & terrace as well as a newly renovated pool and spa to enjoy. Rooms are air conditioned and station transfers included.

Fantastic facilities, unbeatable views

- C | Lake view room
  - B | Lake view superior: +£25pppn
  - A | Lake view & balcony: +£42pppn
- Special offers available



Available all year Bedrooms: 90  
4 night guide price per person from £1,021 Bed & Breakfast or from £1,156 Half Board



**LUGANO**  
Hotel Federale ★★★

*Why we love this hotel...* family-run for 3 generations and still offering a warm welcome. Close to the historic centre on the hill above the lake, the Federale is well known for its restaurant and its weekend Treccia (Sunday bread). On warm Lugano evenings it is a pleasure to dine on the terrace. The comfortable rooms are all air conditioned.

Historic hotel with excellent food

- C | Standard room
  - B | City view & balcony: +£21pppn
  - A | Superior, mountain view: +£38pppn
- Special offers available



Available February - December Bedrooms: 47  
4 night guide price per person from £896 Bed & Breakfast or from £1,066 Half Board

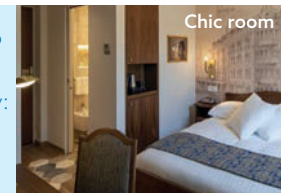


**LUGANO**  
Hotel Internazionale au Lac ★★★

*Why we love this hotel...* it's just across the road from the lake and next door to the stylish shopping area. There is a traditional, historic charm throughout the building and outside is an oasis with swimming pool, palm trees and sun loungers. All rooms at this family-run hotel are air conditioned and there is an honesty bar in the lounge. Station transfers included.

Superb location in the heart of Lugano

- B | Standard room
  - A | Chic room, lake view from balcony: +£31pppn
- Special offers available



Available April - October Bedrooms: 78  
4 night guide price per person from £927 Bed & Breakfast



## LUGANO

### Hotel LuganoDante ★★★★★

*Why we love this hotel...* it oozes style, with every area thoughtfully designed and much of the furniture custom made. We recommend after dinner cocktails in the lively Mixology bar! Rooms are air conditioned and continue the blue colour scheme, reflective of the lake which is a stroll away. The hotel is adjacent to the funicular for the station.

Relax in the designer hospitality

- C | Standard room
- B | Standard plus: +£13pppn
- A | Premium: +£34pppn



Available all year Bedrooms: 85

4 night guide price per person from £1,023 Bed & Breakfast or from £1,359 Half Board (except Sunday evening)



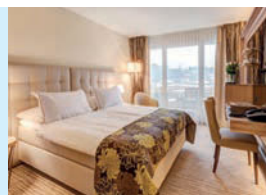
## LUGANO

### Hotel Parco Paradiso ★★★★★

*Why we love this hotel...* a stylish base for your holiday set above the Paradiso area, by the San Salvatore funicular. The restaurants are popular with locals and the Havana Bar has stunning views. Your stay is enhanced with a wellness centre including pool and sauna, and bikes for scenic rides. Rooms are air conditioned and station transfers included.

High level of comfort and service

- C | Mountain view room with balcony
- B | Suite with balcony or terrace: +£28pppn
- A | As above, lake view: +£48pppn



Available all year Bedrooms: 65

4 night guide price per person from £1,026 Bed & Breakfast

# Hotels

## Personally selected for you

We have worked with the majority of these hotels for many years and can personally recommend them for a comfortable stay and a friendly welcome. Full hotel descriptions can be found on our website. We will use our expertise to find the ideal hotel for your stay; we also have access to hundreds more hotels across Switzerland, in case you don't see what you're looking for here.

Read more about the resorts in which these hotels are located:

**LOCARNO** page 42

**LUGANO** page 44

## Always included

### FLIGHTS + HOTELS + RAIL TO RESORT

- Flights London-Zurich including taxes and hold baggage (other flights are available from around the UK)
- Rail travel to resort (2nd class)
- Station transfer to hotel where stated
- Hotel accommodation (based on 2 sharing) with breakfast, or breakfast & dinner
- Half Fare Card for reduced prices for days out on trains, boats and buses throughout Switzerland
- Ticino Ticket offering free bus and train travel around the area
- Personalised, fully detailed itinerary sent with all tickets
- Financial protection ATOL 3148

## Upgrades and flexibility

Just let us know! Lake view rooms add a magical touch to your holiday and are highly recommended.

Hotel guide prices shown are for 4 nights, but we can provide bespoke quotations for any duration.

# Relaxing





# Picturesque

 MOUNTAIN HOLIDAYS

The Alps run through the heart of Switzerland, blessing the country with a particularly dramatic beauty. We have selected our favourite mountain resorts to share with you, varying from idyllic car-free villages to more lively alpine towns. What they all have in common is easy access to the soaring peaks which surround them, as well as wonderful scenery and a warm welcome. Picture yourself on a sunny terrace, breathing in the fresh alpine air, with a stunning view over that glorious high altitude landscape.



## Jungfrau mountains and the Bernese Oberland

In the centre of Switzerland lie the stunning Jungfrau mountains. This region has long been a favourite: the scenery is simply beautiful and is easily accessible from the villages, which happen to be as delightfully charming as you could wish for. The mighty Jungfrau-Aletsch Glacier has been designated a UNESCO World Heritage Site - enjoy it at the Jungfrauoch and Oeschinsee. With activities on offer from a gentle walk, to passing alongside the face of the Eiger in a cable car, to the thrill of a zip wire ride, this is a fabulous destination with something for everyone.

*For a holiday in the Jungfrau mountains, we recommend Wengen, Grindelwald, Mürren Wilderswil or Kandersteg*

Find more information on these pages:	Resort Information	Hotel Information
<a href="#">Wengen</a>	54-55	72-73
<a href="#">Grindelwald</a>	56-57	73-74
<a href="#">Mürren</a>	58-59	74
<a href="#">Wilderswil</a>	60-61	74-75
<a href="#">Kandersteg</a>	62-63	75



## Matterhorn and the Valais mountains

Home to the iconic Matterhorn mountain, the Valais region offers a high altitude holiday in stunning surroundings. There are a range of amazing viewpoints from over 3,000m above sea level – you will find yourself immersed in a hauntingly beautiful alpine world, with the contrasts of blue sky, white peaks and lush green valleys making for wonderful memories. Rushing icy streams and traditional chalet buildings complete the picture in the welcoming, car-free villages. The Valais sunshine allows vineyards and orchards to flourish, and the hotels will proudly serve you the local wine and produce.

*For a picturesque Valais mountain holiday, we recommend Zermatt or Saas-Fee*

Find more information on these pages:	Resort Information	Hotel Information
<b>Zermatt</b>	64-65	76-77
<b>Saas-Fee</b>	66-67	77

## Graubünden mountains and the Engadin

To the eastern side of the country and a region with some very famous resorts: it is easy to see why they are celebrated, thanks to the glorious mountainscapes which surround them. The towns and villages here are well set up with cable cars and mountain railways to help you make the most of the beautiful alpine destinations. With heritage scenic railways, the Rhine Gorge, and the Swiss National Park also nearby, this magnificent region is highly recommended. Wherever you choose to stay, you will have access to unforgettable day trips, great food, and scenic walks in the fresh mountain air.

*For an unforgettable Graubünden mountain holiday, we recommend Klosters, Davos, St. Moritz or Pontresina*

Find more information on these pages:	Resort Information	Hotel Information
<b>Klosters</b>	68-69	78
<b>Davos</b>	68-69	78
<b>St. Moritz</b>	70-71	78
<b>Pontresina</b>	70-71	79



## Alpine walking

Walking through stunning alpine scenery, you will enjoy the contrast of the soaring peaks with the delicate alpine blooms beside your feet. Visitors can see grazing cows with their tinkling bells, herds of goats and sheep, and if you are lucky, wildlife such as birds of prey, marmots, and ibex. There are plenty of gentle, panoramic walks as well as more challenging terrain for serious hikers. Trails have distinctive yellow signs which often give walking times as well as distances and point the way to cable cars and mountain railways - handy for tired legs!

## Mountain activities

What can you expect when you take a cable car from your resort up to a mountain station? There will invariably be a restaurant, often with a sun terrace from where you will have a splendid view with your coffee and cake. There may also be activities such as Trottibikes (electric scooters) for a novel way to travel down the mountain, a Kneipp path (barefoot sensory trail), and for families, a playground and maybe an adventure trail to follow. Wander a little further and you can often find a panoramic viewing platform jutting out from the cliff, as well as plenty of charming picnic spots.

BERNESE OBERLAND

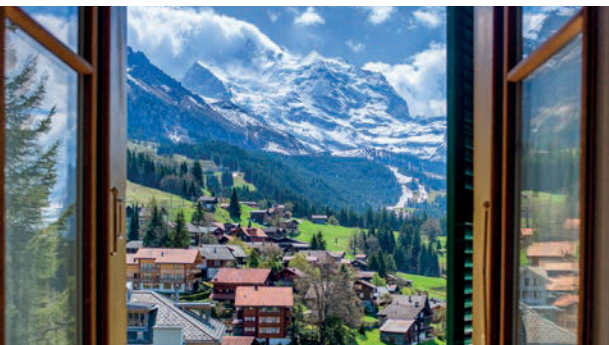


# Wengen 1,274m

Picturesque car-free village in the Jungfrau mountains

Fly to Zurich under 2 hrs  
3 hr train transfer via Interlaken  
Geneva flights also available

A relaxing stay in the heart of the mountains with wonderful walks and high Alps excursions. Idyllic **Wengen** is perched on a sun-soaked terrace with spectacular views and a backdrop of the Eiger, Mönch and Jungfrau mountains. Picture yourself enjoying lunch with views over the beautiful Lauterbrunnen valley!

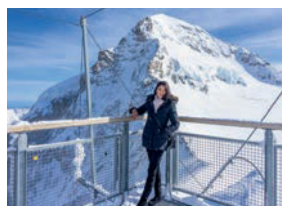


## High above Wengen a train excursion to Jungfraujoch - Top of Europe

3,454m - All year

*Spend a full day here. From Wengen take the train to Kleine Scheidegg to board the famous Jungfraujoch Railway. Highlight - step outside on the snow and ice to view the Aletsch Glacier.*

A true highlight of a visit in Switzerland, once at the top you will have magnificent views of the longest ice stream in the Alps - the Aletsch Glacier - which is 22km long and up to 800m thick. The mighty Eiger, Mönch and Jungfrau massif soaring almost vertically up from the valley is also a sight to behold. Visit the ice palace, the Sphinx viewing platform and spoil yourself with lunch at the Crystal restaurant. Warm clothing recommended all year.





## Not to be missed **Schynige Platte & Alpine Garden**

1,967m – July to October

*A leisurely day out from Wengen. Starts with trains to Wilderswil to join the cogwheel railway up to the floral splendour with panoramic views of the Schynige Platte. There are wonderful walks of all levels and duration whilst the sun terrace is a must for refreshments or lunch – just soak up the views while the daily concert of Alphorn players adds to the stunning setting. Stop off at Breitlauenen on your journey home and try the 'best fruitcake in the region'!*

## Getting around

Travel from Wengen is easy. Enjoy discounted excursions with the **Half Fare Card** which is included in your price. If you like to be out exploring on most days, we recommend upgrading to the **Jungfrau Travel Pass** which covers UNLIMITED free journeys on the scenic mountain railways and cable cars (with a reduction for Jungfrauoch and Schilthorn).

## Other excursions from Wengen

- Grindelwald First – full day including the 'cliff walk'
- Harder Kulm and Interlaken – full day
- Lakes Thun & Brienz Cruises – full day to enjoy the lakes
- Schilthorn-Piz Gloria – half day via neighbouring Mürren

## Two centre scenic rail holidays

Wengen works well with the GoldenPass Express and the Luzern-Interlaken Express - see page 12.



## Männlichen Perfect for walking or just relaxing

2,342m – All year

*Half day visit from Wengen. Take the cable car from the centre of Wengen to Männlichen for incredible views of the Eiger, Mönch and Jungfrau. Walking trails are excellent and the restaurants offer breathtaking panoramic views. You could make it a full day adding on the cableway down to Grindelwald.*

## Always included

FLIGHTS + HOTELS + RAIL TO RESORT

**PLUS!** The fantastic **Half Fare Card** which gives you heavily discounted prices for all your excursions from Wengen. We are fully bonded with ATOL for your financial protection.

## Holiday suggestions

- **7 nights in Wengen with 6 day Jungfrau Pass**  
Full day Schynige Platte, half day Männlichen, full day Lake Thun, full day Grindelwald-First, Full day Harder Kulm and Interlaken
- **4 nights in Wengen and 3 nights in Weggis**  
Idyllic lake and mountain two centre holiday

Choose your hotel... Our selected 3 and 4 star hotels are featured on pages 72-73

# Picturesque

 MOUNTAIN HOLIDAYS



# Grindelwald 1,034m

The Eiger village, a special place surrounded by spectacular mountains

Fly to Zurich under 2 hrs  
3 hr train transfer via Interlaken  
Geneva flights also available

Grindelwald is a welcoming village and perfect for enjoying a wonderful array of trips, each creating a special memory. Glide past the Eiger north face on the cableway or take a gentle walk from Männlichen to Kleine Scheidegg. Whatever you do, always take your time and admire the view from one of the many mountain restaurants!



Bachalpsee

## First mountain cable car to the most scenic area in the Jungfrau region

2,168m April to October

*Spend up to a full day here. From Grindelwald take the cable car to the First and enter an alpine world with stunning walks, restaurants and adventures for the young at heart.*

Stunning views across the Jungfrau mountains, wonderful walks, relaxing mountain restaurants and adventure await you on the First mountain. Experience the Cliff Walk by Tissot with an amazing observation platform with unparalleled views of the mountains. The hour's walk to the alpine lake of Bachalpsee is renowned for the striking mirrored blue reflection of the Schreckhorn. For the adventurous it is difficult to imagine a better setting: the First Zipwire and First Glider are two experiences that will stay with you forever!







## Not to be missed Eiger Express to the Eigerletscher

2,328m – All year

*An exhilarating half day from Grindelwald begins when you board one of the 44 gondolas on the cableway, with continuous departures for this amazing journey. You are seated in this glass bubble that gives you fantastic views as the 15 minute journey passes close to the famous Eiger north face. When you step out at the Eiger station, stay awhile in the Panorama Hall and experience the awe inspiring views. You have a choice to continue up to the Jungfrauoch or enjoy one of the stunning walks here, before returning on the cableway to Grindelwald.*

## Getting around

Travel from Grindelwald is easy with trains to Lauterbrunnen and Interlaken. Enjoy discounted excursions with the **Half Fare Card** which is included in your price. If you like to be out exploring on most days, we recommend upgrading to the **Jungfrau Travel Pass** which covers UNLIMITED free journeys on the scenic mountain railways and cable cars (with a reduction for Jungfrauoch and Schilthorn).

## Other excursions from Grindelwald

- Männlichen – half day, perfect for walking or just relaxing
- Schynige Platte – full day, with views and an alpine garden
- Lakes Thun & Brienz Cruises – full day to enjoy the lakes
- Schilthorn-Piz Gloria – half day via neighbouring Mürren

## Two centre scenic rail holidays

Grindelwald works well with the GoldenPass Express and the Luzern-Interlaken Express – see page 12.



## Pfingstegg – Unforgettable walk to the glacier

1,386m – May to October

*Half day visit from Grindelwald. You start by cable car from Grindelwald to Pfingstegg and its mountain restaurant with views over the village, and continue on an unforgettable walk to the receding glacier. There are also activities such as the zipwire and a toboggan run. Feeling extravagant? How about booking a dinner in one of the cable cars!*

## Always included

FLIGHTS + HOTELS + RAIL TO RESORT

**PLUS!** The fantastic **Half Fare Card** which gives you heavily discounted prices for all your excursions from Grindelwald. We are fully bonded with ATOL for your financial protection.

## Holiday suggestions

- **7 nights Grindelwald with 6 day Jungfrau Pass**  
Full day Schynige Platte, half day Männlichen, full day Lake Thun, full day Grindelwald-First, half day Eiger Express to Eigerletscher station
- **4 nights in Grindelwald and 3 nights in Lucerne**  
Top Luzern-Interlaken Express two centre holiday

Choose your hotel... Our selected 3 and 4 star hotels are featured on pages 73-74

# Picturesque

 MOUNTAIN HOLIDAYS



# Mürren 1,650m

A quiet scenic mountain village at the foot of the Schilthorn

Fly to Zurich under 2 hrs  
3 hr 15 mins train and cable car transfer  
Geneva flights also available

Imagine an idyllic flower-decked chalet village in the Swiss mountains and you could be thinking of **Mürren**, a delightful, car-free village reached by cable car and mountain railway from Lauterbrunnen or cable car from Stechelberg. This cosy village is a great choice for a quiet holiday close to nature with stunning walks and incredible views.



## Schilthorn - cable car to the James Bond revolving restaurant 'Piz Gloria'

2,970m - All year

*Half day visit, from breakfast to sunset. Reached in just 17 minutes, this famous summit and restaurant will always be remembered for the 60's James Bond film 'On Her Majesty's Secret Service'.*

Enjoy the spectacular views of the Eiger, Mönch and Jungfrau from the viewing platform and the revolving restaurant which makes a full rotation every 45 minutes. You could even book for breakfast. Follow in James Bond's footsteps in the interactive Bond World exhibition and the 007 Walk of Fame. Stop off at Birg middle station for the Skyline Walk which lets you stare into the abyss below. If that's not enough excitement, take the Thrill Walk: a 200m long rocky path down among the vertical walls of the rock massif.





## Not to be missed Trümmelbach Falls, a spectacle that is a treat for the senses

April to November

*Half day trip from Mürren.* Below the village in the Lauterbrunnen Valley lie the Trümmelbach Falls which comprise no fewer than 10 glacier fed waterfalls inside a mountain. The impressive falls - floodlit and accessible by a special tunnel lift - carry up to 20,000 litres of water every second! These are Europe's largest subterranean waterfalls; indeed Lauterbrunnen is known as the 'valley of 72 waterfalls'. The Falls are at their most powerful from April to June when the snows have melted and the water makes its way down the mountain.

## Getting around

Travel from Mürren is by train and cable car via Lauterbrunnen. Enjoy discounted excursions with the **Half Fare Card** which is included in your price. If you like to be out exploring on most days, we recommend upgrading to the **Jungfrau Travel Pass** which covers UNLIMITED free journeys on the scenic mountain railways and cable cars (with a reduction for Jungfrauoch and Schilthorn).

## Other excursions from Mürren

- Schynige Platte - full day, with views and an alpine garden
- Harder Kulm and Interlaken - full day to explore
- Lakes Thun & Brienz Cruises - full day to enjoy the lakes
- Jungfrauoch - full day to the Top of Europe

## Two centre scenic rail holidays

Mürren works well with the GoldenPass Express and the Luzern-Interlaken Express - see page 12.



## Allmendhubel - Mürren's gorgeous local mountain, perfect for walking

1,907m - June to October

*Half day visit.* Only a few minutes by modern funicular from Mürren is the fabulous Allmendhubel, a perfect place to relax and enjoy splendid views of the snow-capped alpine peaks on the opposite side of the valley. Allmendhubel is also an ideal starting point for many of the most beautiful hikes in the region. Lunch or refreshments make your visit complete at the panoramic restaurant and terrace.

## Always included

FLIGHTS + HOTELS + RESORT TRANSFERS

**PLUS!** The fantastic **Half Fare Card** which gives you heavily discounted prices for all your excursions from Mürren. We are fully bonded with ATOL for your financial protection.

## Holiday suggestions

- **7 nights Mürren with 6 day Jungfrau Pass**  
Full day Schynige Platte, half day Schilthorn, full day Lake Thun, full day Grindelwald-First, half day Allmendhubel
- **4 nights in Mürren and 3 nights in Brunnen**  
Idyllic lake and mountain two centre holiday

Choose your hotel... Our selected 4 star hotel is featured on page 74

# Picturesque

 MOUNTAIN HOLIDAYS



# Wilderswil 586mm

Idyllic village, gateway to the glorious Jungfrau region

Fly to Zurich under 2 hrs  
2 hr 15 mins train transfer to Interlaken  
and 10 minute bus to Wilderswil  
Geneva flights also available

The pretty village of **Wilderswil** is perfectly positioned just a short bus ride from Interlaken and is on the train line for journeys into the Jungfrau mountains where there are plenty of scenic walks. The peaceful surroundings make for a lovely holiday in the foothills, with historical ruins and a watermill close by. Wilderswil is also home to the Schynige Platte heritage railway.



## Embark on a scenic train ride to Schynige Platte for superb views, walks and an alpine garden

1,967m - July to October

*An absolutely delightful day out. This is a real summer and autumn treat which starts with the heritage cogwheel railway for a winding scenic journey up to the Schynige Platte viewpoint.*

Be sure to look out of both sides of the train for lovely views over the mountains and lakes Thun and Brienz as you go. On arrival you have a choice of embarking upon a walk in the alpine scenery or visiting the alpine garden which boasts over 600 varieties of delicate plants flourishing in this specialised environment. Make your way to the panoramic terrace where you can soak up unforgettable views and relax with a drink in the restaurant. Alphorn players complete the atmosphere with their iconic melodies.





## Not to be missed Aare Gorge and the awesome power of nature

Available April to October

*A memorable half day to the Haslital region, where the lower valley is separated from the upper by the Aare Gorge. Over thousands of years, the river Aare has eroded a path through the rock and created a 1,400m long and 200m deep gorge. There are many paths and tunnels to walk through so that visitors can admire at close hand just how powerful water can be. To make a full day in the Haslital, why not visit Meiringen and the Reichenbach Falls, both linked with the Sherlock Holmes stories.*

## Getting around

Our holidays include the **Interlaken Guest Card** offering free local bus travel for the 10 minute journey from Wilderswil. Interlaken has unrivalled rail and boat connections so you can make the most of discounted excursions with the **Half Fare Card** which is included in your price. If you like to be out exploring on most days, we recommend upgrading to the **Jungfrau Travel Pass** which covers UNLIMITED free journeys on the scenic mountain railways and cable cars (with a reduction for Jungfrauoch and Schilthorn).

## Other excursions from Wilderswil

- Jungfrauoch – full day to the Top of Europe
- Kleine Scheidegg – half day for scenic alpine walks
- Grindelwald First – full day including the 'cliff walk'
- Ballenberg, Switzerland's living museum. Half day

## Two centre scenic rail holidays

Wilderswil works well with the GoldenPass Express and the Luzern-Interlaken Express – see page 12.



## Lakes Thun and Brienz – scenic cruises

Lake Thun all year, Lake Brienz April to October

*A half day excursion creating treasured memories. Take the bus down to Interlaken which is placed between the lakes. There are regular departures on both lakes and you will be able to settle down and watch the outstanding scenery glide by. As well as the stunning mountains you'll see idyllic villages and romantic castles. Time your cruise carefully and it can be aboard a restored paddle steamer which is a real treat! Upgrade to 1st class to access the upper deck.*

## Always included

FLIGHTS + HOTELS + RESORT TRANSFERS

**PLUS!** The fantastic Half Fare Card which gives you heavily discounted prices for all your excursions from Wilderswil. We are fully bonded with ATOL for your financial protection.

## Holiday suggestions

- **7 nights Wilderswil**  
Half day cruise, half day Schynige Platte, half day to Ballenberg outdoor museum, half day to Aare Gorge, full day to Jungfrauoch
- **3 nights Wilderswil and 4 nights in Montreux**  
Memorable GoldenPass Express two centre holiday

Choose your hotel... Our selected 3 star hotels are featured on pages 74-75

# Picturesque

 MOUNTAIN HOLIDAYS



# Kandersteg 1,174m

Perfectly relaxed mountain getaway in the midst of alpine nature

Fly to Zurich under 2 hrs

2 hr 30 mins train transfer  
via Interlaken

Geneva flights also available

Come and visit this gentle mountain village for the ultimate retreat: there is spectacular scenery to be enjoyed, all within easy reach of Kandersteg. Stunning alpine locations are waiting to be explored, with their mountain restaurants and panoramic walking trails. Don't miss the romantic, glacier-fed lakes of Oeschinensee and Blausee.



## Oeschinensee - cable car to Oeschinen with a 30 minute scenic walk to the lake

1,578m - mid May to October

*Immerse yourself for a day in the scenery and enjoy walks around this stunningly beautiful lake, surrounded by awe-inspiring mountains. You can also take a dip in the cool summer waters!*

The walk from the cable car station to the lake takes around half an hour through meadows and pine woods. The trails are well maintained and feature plenty of benches should you need to rest awhile. You can even walk up to the lake from Kandersteg, without taking the cable car. This would take about 90 minutes and affords fantastic views en route to this UNESCO protected landscape. The restaurant and panoramic terrace offer a magnificent view so you should stay awhile and enjoy a drink or a meal.





## Not to be missed Sunnbüel cable car for the legendary Gemmi Pass trail

1,936m - June to October

*A delightful half day. A unique panorama awaits you surrounded by breathtaking mountain scenery; making a stop at the Sunnbüel restaurant for a refreshing drink a must. This is also a walkers' paradise, as the starting point of the legendary trail used by muleteers between the Cantons of Bern and Valais. Today you can sample it with a return walk to the Schwarenbach Mountain Hotel. Other round trips include a trail to the crystal clear Arvensee - three small meltwater lakes set in the Arven wood - or alternatively a 'green fingers' themed route with numerous plant species that are native to the Stierenbärgli below Sunnbüel.*



## Getting around

Kandersteg Guest Card offers FREE travel on local transport and discounts for cable cars. Kandersteg also has great rail connections to Lake Thun and Brig where you enjoy discounted excursions with the **Half Fare Card** which is included in your price.

## Other excursions from Kandersteg

- Allmenalp – half day visit via cable car
- Adelboden – half day by train and PostBus
- Spiez and Lake Thun for a lake cruise – full day
- Bern – full day to the medieval capital of Switzerland

## Two centre scenic rail holidays

Kandersteg works well with the GoldenPass Express, Luzern-Interlaken Express and the Lötschberg Regio Express – see page 12.



## Brig – A historic town with the fascinating Stockalper Palace

All year

*Full day visit via the Lötschberg Line from Kandersteg to this lovely old town with its stately houses, cosy inns and good local shopping. Brig also boasts the Stockalper Palace, one of the most important baroque buildings in Switzerland. It was built in the 17th century by Kasper von Stockalper who traded salt, silk and goods along the mule track he had extended through the Simplon Pass.*

## Always included

FLIGHTS + HOTELS + RAIL TO RESORT

**PLUS!** The fantastic **Half Fare Card** which gives you heavily discounted prices for all your excursions from Kandersteg. We are fully bonded with ATOL for your financial protection.

## Holiday suggestions

- **7 nights Kandersteg**  
Full day cable car to Oeschinensee, full day Adelboden and its mountains, half day to Sunnbüel
- **4 nights in Kandersteg and 3 nights in Weggis**  
Wonderful lake and mountain two centre holiday

Choose your hotel... Our selected 3 star hotel is featured on page 75

Picturesque  
 MOUNTAIN HOLIDAYS



# Zermatt 1,608m

## Majestic alpine village overlooked by the Matterhorn

Fly to Zurich or Geneva under 2 hrs  
3 hr 45 mins train transfer with  
scenic ascent from Visp

Picturesque **Zermatt** is the car-free mountain village with everything. A funicular, cog railways and cable cars offer easy access to mountains at over 3,000m and there are unbelievable walks and scenic restaurants with views dominated by the glorious Matterhorn. Non-skiers are well catered for in winter; in summer this is simply a stunning destination.



### Matterhorn Glacier Paradise an unforgettable day with the highest viewing platform in Europe

3,883m - All year

*Full day trip.* You will feel on top of the world amongst the 38 breathtaking 4,000m+ giants of the Swiss, French and Italian Alps where Mont Blanc appears almost near enough to touch!

This incredible network of cable cars from the village of Zermatt to Klein Matterhorn allows you to stop and explore en route, or journey in 45 minutes to the Matterhorn Glacier Paradise. On arrival you can head for the summit lift to the highest viewing platform at 3,883m where a 360° panorama opens up, including the south face of the iconic Matterhorn itself. Enjoy lunch at the restaurant with its panoramic viewing windows and a visit to the fascinating Glacier Palace with its ice sculptures. Travel onwards - via the dramatic new Matterhorn Alpine Crossing cable car - to Cervinia in Italy for an Italian lunch and an alternative view of the Matterhorn.





## Not to be missed **Gornergrat cog railway, a famous journey with an ever changing view**

3,089m – All year

*Full day trip.* The journey from Zermatt is a joy as your train meanders over dramatic bridges, across forests and past rocky ravines and mountain lakes. When you stand on the observation platform at the Gornergrat you will see a mountain panorama amongst the finest in the world with unrivalled views of the Matterhorn and the Monte Rosa massif featuring Switzerland's highest mountain peak, and the Gorner Glacier, Switzerland's second largest glacier. The Kulm Hotel at the summit station includes a restaurant and astronomical observatory. Take time to visit Zoom The Matterhorn interactive exhibition - a new way to experience the Matterhorn on the Gornergrat.

## Getting around

Zermatt is reached by rail from Visp or Brig. These stations have excellent connections to the national rail network, on which you can enjoy heavily discounted excursions with the **Half Fare Card** included in your price.

## Other excursions from Zermatt

- Schwarzsee – half day. Idyllic lake with mountain reflections
- Scenic walking for all levels with 400km of trails in the region
- Randa walk with fabulous 500m suspension bridge, half day
- Matterhorn museum (in village) – the mountain story

## Two centre scenic rail holidays

Zermatt is on the route of the Glacier Express see page 12.



## Sunnegga and Rothorn – The finest view of the Matterhorn

3,103m – June to October

*Full day visit* from Zermatt by underground funicular to Sunnegga, where you can enjoy views from the large sun terrace before taking the gondola to Blauherd. From here you can walk back to Sunnegga on the Marmot trail, or continue up to Rothorn by cable car. Many locals recommend this view of the Matterhorn as its distinctive pyramid shape is viewed from Rothorn – judge for yourself!

## Always included

FLIGHTS + HOTELS + RAIL TO RESORT

**PLUS!** The fantastic **Half Fare Card** which gives you heavily discounted prices for all your excursions from Zermatt. We are fully bonded with ATOL for your financial protection.

## Holiday suggestions

- **7 nights Zermatt**  
Full day cable car Matterhorn Glacier Paradise, full day Gornergrat on the famous cog railway, half day walk Blauherd to Sunnegga on the marmot trail
- **4 nights Zermatt and 3 nights St. Moritz**  
Fantastic Glacier Express two centre holiday

Choose your hotel... Our selected 3 and 4 star hotels are featured on pages 76-77

Picturesque  
 MOUNTAIN HOLIDAYS



# Saas-Fee 1,800m

Attractive, high valley village with a rare old charm

Fly to Zurich or Geneva under 2 hrs  
3 hr 20 mins transfer via train to Visp  
and scenic PostBus to Saas-Fee

Welcome to the 'Pearl of the Alps'. **Saas-Fee** has retained its old character with an abundance of charm and narrow cobbled streets and it is hidden away at the foot of the Dom, Switzerland's highest mountain. Although the car-free village has kept its traditional feel, there is a very modern transport system into the high Alps for you to enjoy.



## Felskinn to Allalin dramatic journey to the high Alps with a revolving restaurant and pure, fresh air

3,500m - June to October

*This half day trip rewards you with some of the finest views in the Alps from the stunning Mittelallalin, while the fascinating Ice Palace tells the story of the 2,000 year old glacier.*

The first section of the journey has lovely views from the cable car over Saas-Fee before you arrive at the 3,000m Felskinn, where you can relax with a drink or take a scenic walk. From Felskinn, the world's highest underground funicular will speed you through the heart of the mountain to the Mittelallalin station. Treat yourself in the amazing revolving restaurant - it takes an hour for the restaurant to make its full 360° circuit while you admire the wonderful, ever-changing views of the dramatic 4,000m+ mountains. You will feel on top of the world.



## Not to be missed Spielboden and Längfluh - A day with the marmots and spectacular views

2,780m - July to September

*A leisurely half day trip starts with your first cable car to Spielboden where you can take time to visit Gletschergrotte, a welcoming mountain restaurant which offers a cosy dining room and panoramic sun terrace. Look out for scampering marmots, the comical little mountain dwellers. Your second cable car is to Längfluh a magnificent location from which to enjoy the views of the fascinating Saas glacier and its tongues of ice. You can also see down to the village of Saas-Fee and towards the Dom, which at 4,545m is one of the highest mountains in Switzerland.*

## Getting around

Saas-Fee offers overnight guests the **Saastal Card** with FREE travel during the summer on most of the cable cars (discount for the funicular to Mittelallin), plus local bus journeys. Saas-Fee has a regular PostBus to Visp or Stalden-Saas, where you can access the national rail network and enjoy discounted excursions with the **Half Fare Card** included in your price.

## Other excursions from Saas-Fee

- Plattjen - scenic half day with mountain walks
- Hannig - a gentle walk & great views, half day
- Brig - full day to explore this historic town and its castle
- Zermatt - visit the Matterhorn village - full day

## Two centre scenic rail holidays

From Saas-Fee you can join the Glacier Express at Brig see page 12.



## Kreuzboden & Hohsaas Perfect day to explore the wider Saas valley

3,200m - June to October

*Enjoy a memorable day out from Saas-Fee starting with a short bus ride to Saas Grund and a look around the village. Take the 8 person gondola to Kreuzboden with its small lake, memorable walks and views over the valley and all 18 of the 4000m+ peaks in the region. Higher up at Hohsaas is a rocky world, with views over the awesome Trift glacier. Relaxing restaurants are available at both stops.*

## Always included

FLIGHTS + HOTELS + RESORT TRANSFERS

**PLUS!** The fantastic **Half Fare Card** which gives you heavily discounted prices for all your excursions from Saas-Fee. We are fully bonded with ATOL for your financial protection.

## Holiday suggestions

- **7 nights Saas-Fee with your free Guest Card**  
Full day Felskinn to Allalin, full day Spielboden and Längfluh, full day Kreuzboden & Hohsaas
- **4 nights in Saas-Fee and 3 nights in Weggis**  
Scenic two centre mountain and lake holiday

Choose your hotel... Our selected 4 star hotel is featured on page 77

# Picturesque

 MOUNTAIN HOLIDAYS

# Davos & Klosters

GRAUBÜNDEN  1,560m & 1,205m

Alpine neighbours of contrast in unspoilt Switzerland

Fly to Zurich under 2 hrs

2 hr 15 mins train transfer to Klosters

2 hr 45 mins train transfer to Davos

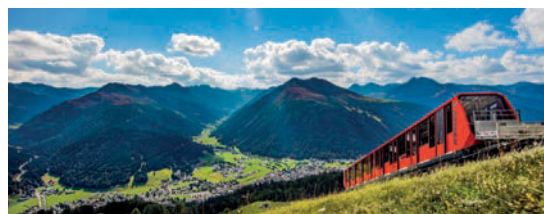
Choose between the charming, genteel village of **Klosters** in a tranquil setting or the bustling mountain town of **Davos**. The latter was developed with sanatoria and large hotels in the 19th century and today has plenty of shops & restaurants. Both resorts are linked by bus and rail connections and boast an amazing choice of mountain excursions.



## Parsenn and Gotschna – two scenic routes to discover this timeless giant among the mountains

2,844m – June to October

*Full day from Klosters (cable car to Gotschnagrät) or from Davos (funicular to Weissfluhjoch and cable car to the summit). You can use either route as there is a regular train link between the two resorts.*



This scenic masterpiece is a paradise for walkers of all levels. One of the highlights is a rewarding 3 hour panorama trail which links both sides of the mountain between Gotschnagrät and the Parsenn mittelstation, and offers beautiful views and mountain restaurants on hand with hearty food. This exceptional mountain area is really worth exploring.





## Not to be missed Schatzalp – A charming funicular with a beautiful alpine garden

1,863m – May to October

*Your leisurely half day starts from Davos with a quick trip on the funicular to Schatzalp: a relaxing paradise, with connections to the Thomas Mann novel 'The Magic Mountain'. The hotel was originally built as a luxurious sanatorium but now is an Art Deco hotel. The Panorama restaurant and terrace is recommended with magnificent views before a visit to the Alpinum. This botanical garden features 5,000 different plant species from mountains all over the world, a wonder to what can grow at 1,900m! There are lovely walks to enjoy and a good choice is a walk back down to Davos.*

## Getting around

Our holidays include the **Davos Klosters Premium Card** offering free travel on rail and bus services in the region, all the way to Filisur. This card also gives you very special prices on the mountain railways and cable cars. Enjoy discounted excursions further afield with your **Half Fare Card**, which is included in your price.

## Other excursions from Davos & Klosters

- Madrisa scenic cable car – half day to delight the whole family
- Rinerhorn – half day exploring a scenic hidden gem
- Historic Chur – full day by rail to explore the region's capital
- Bernina Express full day trip to Tirano – join at Filisur

## Two centre scenic rail holidays

These resorts work well with the Glacier Express (join at Filisur or Chur) - see page 12.

## Jakobshorn – Spectacular views of the high Alps with scenic walks

2,590m – July to October

*Half day visit from Davos. The Jakobshorn cable car transports you up the mountain in two stages and offers spectacular views over the high Alps. There are numerous walking trails with panoramic views which will never be forgotten. You can even walk to a charming alpine cheese dairy for a demonstration. At the middle station, the Jschalp Bergrestaurant offers a light lunch, cool drinks and the chance to relax on the sun terrace.*

## Always included

FLIGHTS + HOTELS + RAIL TO RESORT

**PLUS!** The fantastic **Half Fare Card** which gives you heavily discounted prices for all your excursions from Davos and Klosters. We are fully bonded with ATOL for your financial protection.

## Holiday suggestions

- **7 nights Davos with your Premium Card**  
Full day Parsenn, full day Gotschna, full day Madrisa, half day Schatzalp, day trip to historic Chur
- **4 nights in Davos or Klosters and 3 nights in Lucerne**  
Incredible lakes and mountains two centre holiday

Choose your hotel... Our selected 4 star hotels are featured on page 78

# Picturesque

 MOUNTAIN HOLIDAYS



# St. Moritz & Pontresina

1,562m & 1,800m

Glamorous St. Moritz and the charming village of Pontresina

Fly to Zurich under 2 hrs  
3 hr 30 mins train transfer including  
the stunning Albula line

St. Moritz is without doubt one of the leading resorts in Switzerland, beautifully situated above a lake in the scenic Engadin valley and known for its designer shops. The attractive village of **Pontresina** is another favourite, located on a sheltered mountain plateau and surrounded by fragrant pine forests. Both resorts offer many free mountain excursions.



Pontresina

## Bernina Express return train to the Italian town of Tirano considered the most spectacular journey in Switzerland

All year

*Full day to remember as you join the Bernina Express in either St. Moritz or Pontresina. Sit back and take in the amazing scenery as you travel over the highest railway across the Alps.*

After entering the Bernina valley with views of the Morteratsch Glacier the train climbs to the highest point on the line. From here you travel along the huge Lago Bianco reservoir to Alp Grüm before the very slow and meandering descent over the southern Alps. The famous viaduct at Brusio has a 360-degree curve to overcome the difference in altitude. Once you have crossed into Italy, you arrive in Tirano. This small historic town has charming narrow streets in which to stretch your legs, and a choice of local restaurants for lunch before your return with a totally different view!





## Not to be missed **Corvatsch – wonderful views over the Upper Engadin lakes**

3,303m – June to October

*Your full day in the mountains starts with a short bus ride from St. Moritz or Pontresina to the Corvatsch valley station at Surlej on Lake Silvaplana. Modern cable cars whisk you up to the Murtèl middle station: why not stretch your legs with a short hike to the Fuorcla Surlej mountain inn and admire the Biancograt ridge reflected in the shimmering blue waters of the little lake. Continue up to the summit station where you will find the Panorama restaurant, the highest in the Graubünden region and known for its superb views. Now for a surprise - on the Corvatsch, is the world's highest whisky distillery!*

## Getting around

Our holidays include the fabulous **Engadin Inclusive Card** offering free and unlimited travel during the summer on the cable cars and mountain railways, plus local public transport. Travel further afield is easy by train with the **Half Fare Card** which is included in your price.

## Other excursions from St. Moritz & Pontresina

- Piz Nair full day – cable car from St. Moritz
- Diavolezza cable car to the dramatic glacier station. Full day
- Lunch at Alp Grüm – full day via the Bernina line
- Visit the Swiss National Park at Zernez, full day

## Two centre scenic rail holidays

St. Moritz and Pontresina work very well with the Glacier Express and the Bernina Express - see page 12.



## Muottas Muragl and Alp Languard - Better than any postcard!

2,456m – June to October

*Half day visit. Bus to the valley station to take the funicular to the start of a 7km panorama trail between Muottas Muragl and Alp Languard. This walk is certainly worth a special mention as it is virtually flat and features the charming Munt da la Bês-cha mountain restaurant halfway along. The total walking time is approximately 2½ hours. At Alp Languard, you have stunning views and if you are really lucky you may even spot an Ibex here. Take the chairlift down to Pontresina, and St. Moritz is just a short bus ride away.*

## Always included

FLIGHTS + HOTELS + RAIL TO RESORT

**PLUS!** The fantastic **Half Fare Card** which gives you heavily discounted prices for all your excursions from St. Moritz or Pontresina. We are fully bonded with ATOL for your financial protection.

## Holiday suggestions

- **7 nights St. Moritz or Pontresina with your Engadin Card**  
Full day Bernina Express return journey to Tirano, full day Muottas Muragl and Alp Languard, half day Piz Nair
- **4 nights in St. Moritz or Pontresina and 3 nights in Zermatt**  
Fantastic Glacier Express two centre holiday

Choose your hotel... Our selected 3 and 4 star hotels are featured on pages 78-79

# Picturesque

 MOUNTAIN HOLIDAYS



## WENGEN

### Hotel Alpenrose ★★★

*Why we love this hotel...* Wengen's oldest hotel sits in a tranquil position with stunning views, just 5 minutes from the station. There is a long tradition of warm hospitality and excellent service from the family who run the Alpenrose with its comfortable lounges, cosy bar, and hearty dinner & breakfast. Highly recommended. Station transfers included.

Alpine charm with amazing views

C | North facing room

B | Mountain view, balcony: +£22pppn

A | As B, Superior: +£45pppn

Special offers available



Available January - March & May - October Bedrooms: 50  
4 night guide price per person from £839 Half Board



## WENGEN

### Hotel Bellevue ★★★

*Why we love this hotel...* a combination of spectacular views, warm hospitality, tradition, and tranquillity, all just minutes from the village centre. There is an attractive pine clad dining room with excellent cuisine; on warm days, it is a pleasure to dine on the terrace. For relaxation there is a bar, Jacuzzi, and sunny garden. Station transfers included.

Outstanding Jungfrau & valley views

B | North facing room

A | South facing with balcony:  
+£22pppn

Special offers available



Available January - March & May - September Bedrooms: 34  
4 night guide price per person from £772 Bed & Breakfast  
or from £893 Half Board



## WENGEN

### Hotel Falken ★★★

*Why we love this hotel...* the hotel exudes historical charm and is conveniently located in the centre of the village. You'll step back into the 19th century in the atmospheric dining room; during warm summer evenings, dinner can also be taken in the garden. Relax in the bar where you can enjoy mountain views along with your drink. Station transfers included.

Historic, family run hotel

D | Village view room

C | As D, Superior +£11pppn

B | Mountain view: +£22pppn

A | As B, Superior: +£34pppn



Available June - October Bedrooms: 44  
4 night guide price per person from £971 Half Board



## WENGEN

### Braunbär Hotel & Spa ★★★★★

*Why we love this hotel...* it has a fantastic position in the heart of Wengen. Newly renovated but still managed by the Kienzler family, the hotel boasts a modern mountain restaurant, a cosy fondue hut and a bar which is perfect for pre-dinner cocktails. The welcoming Spa Nuxe has an indoor pool, outdoor sauna, steam room and sun terrace. Station transfers included.

Warm welcome in the village centre

C | Standard room

B | Classic: +£17pppn

A | Privilege: +£39pppn

Special offers available



Available January - March & May - October Bedrooms: 80  
4 night guide price per person from £897 Bed & Breakfast  
or from £1,148 Half Board (compulsory 12 Jul-16 Aug)





## WENGEN

### Beausite Park Hotel & Spa ★★☆☆

*Why we love this hotel...* a reputation for excellent food and service. Situated in a beautiful position above the village, the hotel's lounge and dining room have magnificent Jungfrau views. You may like to relax on the sun terrace, try the crystal waters of the garden swimming pond, or enjoy the wellness spa with its indoor pool. Station transfers included.

#### Idyllic views at this superior hotel

- B** | Forest view room
- A** | Jungfrau view with balcony: +£34pppn



Available January - September Bedrooms: 43

4 night guide price per person from £1,139 Bed & Breakfast or from £1,434 Half Board



## GRINDELWALD

### Parkhotel Schoenegg ★★☆☆

*Why we love this hotel...* it has amazing views and is set in a quiet garden within a short walk of the village centre. This welcoming hotel has a cosy library and bar, while the hearty dinner is well recommended and can be enjoyed on the terrace on warm evenings. A spa with indoor pool and views of the Eiger completes the facilities. Station transfers included.

#### Eiger views at this friendly hotel

- D** | Superior garden view room
  - C** | As D, Deluxe: +£17pppn
  - B** | Mountain view, balcony: +£17pppn
  - A** | As B, Deluxe: +£34pppn
- Special offers available



Available January - March & June - October Bedrooms: 50

4 night guide price per person from £1,051 Bed & Breakfast or from £1,118 Half Board

# Hotels

## Personally selected for you

We have worked with the majority of these hotels for many years and can personally recommend them for a comfortable stay and a friendly welcome. Full hotel descriptions can be found on our website. We will use our expertise to find the ideal hotel for your stay; we also have access to hundreds more hotels across Switzerland, in case you don't see what you're looking for here.

Read more about the resorts in which these hotels are located:

**WENGEN** page 54

**GRINDELWALD** page 56

## Always included

### FLIGHTS + HOTELS + RAIL TO RESORT

- Flights London-Zurich or London-Geneva including taxes and hold baggage (other flights are available from around the UK)
- Rail travel to resort (2nd class)
- Station transfer to hotel where stated
- Hotel accommodation (based on 2 sharing) with breakfast, or breakfast & dinner
- Half Fare Card for reduced prices for days out on trains, boats and buses throughout Switzerland
- Personalised, fully detailed itinerary sent with all tickets
- Financial protection ATOL 3148

## Upgrades and flexibility

Just let us know! Mountain view rooms add a magical touch to your holiday and are highly recommended.

Hotel guide prices shown are for 4 nights, but we can provide bespoke quotations for any duration.

# Picturesque

 MOUNTAIN HOLIDAYS



**GRINDELWALD**  
Hotel Kreuz & Post ★★★★★

*Why we love this hotel...* very conveniently located in the village, this traditional family-run hotel has views of the surrounding peaks and is renowned for its traditional cuisine. The roof terrace has simply beautiful views. Guests enjoy the hospitality in the elegant lounge and bar, while the charming Aqua Relax wellness area more than lives up to its name.

Hospitable and relaxed village hotel  
**B** | Standard room  
**A** | Eiger view superior with balcony:  
 +£17pppn  
 Special offers available



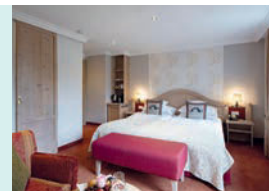
Available January - March & May - December Bedrooms: 42  
 4 night guide price per person from £894 Bed & Breakfast  
 or from £1,096 Half Board



**GRINDELWALD**  
Romantik Hotel Schweizerhof ★★★★★

*Why we love this hotel...* converted from a smithy, it offers modern comfort in a charming, traditional manner. Family-run and close to the centre, the hotel is known for its excellent cuisine and views over the Eiger. Relax in the bar and lounge with open fireplace, or outside on the terrace. Spa facilities include an indoor pool. Station transfers included.

Unique hotel with historic charm  
**B** | Comfort north facing room  
**A** | Superior Eiger view with balcony  
 or terrace: +£20pppn  
 Special offers available



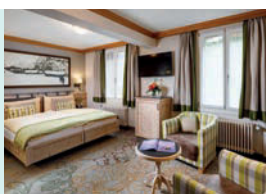
Available all year Bedrooms: 70  
 4 night guide price per person from £1,310 Bed & Breakfast  
 or from £1,399 Half Board



**MÜRREN**  
Hotel Eiger ★★★★★

*Why we love this hotel...* for its family-run charm and the magnificent alpine views. Centrally located in the village, guests can relax in the indoor pool and Jacuzzi while gazing out at the Eiger and Mönch. The generous breakfast is a great feature here and the evening meals are equally to be recommended. Enjoy after dinner drinks in the cosy Tächibar.

Highly recommended family-run hotel  
**B** | Standard room  
**A** | Mountain view superior with  
 balcony: +£19pppn  
 Special offers available



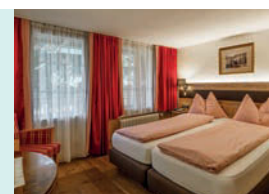
Available January - March & May - October Bedrooms: 48  
 4 night guide price per person from £1,045 Bed & Breakfast  
 or from £1,268 Half Board



**WILDERSWIL**  
Hotel Alpenblick ★★★

*Why we love this hotel...* award winning à la carte restaurant with an excellent wine list. The half board dinner is also very good. From Jan-May and Oct-Nov you will find complimentary cake on offer during the afternoons. Look out for the pleasant garden and terrace, perfect for drinks. This traditional, family run hotel is conveniently situated for exploring from Wilderswil.

Superb cuisine in a traditional setting  
**C** | Standard room  
**B** | Superior: +£11pppn  
**A** | Deluxe: +£39pppn



Available January - November Bedrooms: 40  
 4 night guide price per person from £892 Bed & Breakfast  
 or from £954 Half Board



**WILDERSWIL**  
Hotel Bären ★★★

*Why we love this hotel...* the rustic style makes for a charming stay. The hotel's cuisine is renowned in the area and in good weather, nothing beats dining on the large garden terrace. The Bären boasts an atmospheric wine and cheese cellar where you can enjoy a drink and sample cheese produced on the local mountain. Relax in the sauna after a day's sightseeing.

Superb cuisine in a traditional setting  
**B** | Smaller standard room  
**A** | Larger, superior: +£11pppn  
 Special offers available



Available all year Bedrooms: 45  
 4 night guide price per person from £798 Bed & Breakfast  
 or from £954 Half Board



**KANDERSTEG**  
Hotel Bernerhof ★★★

*Why we love this hotel...* a comfortable chalet-style, located in the centre of Kandersteg. Relaxing on the sun terrace is a joy: soak up the full grandeur of the Blümlisalp. A tempting buffet breakfast awaits, and you are sure to enjoy the excellent evening meal. Other facilities here include a small lounge, bar, sauna, and steam bath. Station transfers included.

Perfect Kandersteg location & views  
**B** | Standard room  
**A** | Mountain view superior with balcony: +£22pppn  
 Special offers available



Available January - March & May - October Bedrooms: 45  
 4 night guide price per person from £888 Half Board

# Hotels

Personally selected for you

We have worked with the majority of these hotels for many years and can personally recommend them for a comfortable stay and a friendly welcome. Full hotel descriptions can be found on our website. We will use our expertise to find the ideal hotel for your stay; we also have access to hundreds more hotels across Switzerland, in case you don't see what you're looking for here.

Read more about the resorts in which these hotels are located:

- GRINDELWALD** page 56
- MÜRREN** page 58
- WILDERSWIL** page 60
- KANDERSTEG** page 62

## Always included

### FLIGHTS + HOTELS + RESORT TRANSFERS

- Flights London-Zurich or London-Geneva including taxes and hold baggage (other flights are available from around the UK)
- Rail (or rail & bus/cable car) travel to resort (2nd class)
- Station transfer to hotel where stated
- Hotel accommodation (based on 2 sharing) with breakfast, or breakfast & dinner
- Half Fare Card for reduced prices for days out on trains, boats and buses throughout Switzerland
- Local guest card offering free bus and rail travel around the Wilderswil and Kandersteg areas
- Personalised, fully detailed itinerary sent with all tickets
- Financial protection ATOL 3148

## Upgrades and flexibility

Just let us know! Mountain view rooms add a magical touch to your holiday and are highly recommended.

Hotel guide prices shown are for 4 nights, but we can provide bespoke quotations for any duration.

# Picturesque





**ZERMATT**  
Hotel Butterfly ★★★

*Why we love this hotel...* well-appointed and with a warm ambience as soon as you arrive – the reception is next to a cosy lounge where guests like to relax with a drink. The Butterfly has a quiet but convenient location and is family-run. A charming piano bar welcomes you in the evening; other facilities include a sauna and relaxation room.

Very peaceful and relaxing stay

A | Room with balcony

Special offers available



Available January - October Bedrooms: 61  
4 night guide price per person from £923 Bed & Breakfast  
or from £1,080 Half Board



**ZERMATT**  
Hotel Excelsior ★★★

*Why we love this hotel...* it offers a comfortable stay and a splendid view of the Matterhorn. The Excelsior enjoys a convenient, central location and features the Ex-Bar, a popular place to have a drink. The restaurant has an extensive cellar, and the restaurants make good use of fresh local produce; breakfast is a welcoming buffet. Station transfers included.

Matterhorn views at great value

B | Economy village view room

A | South facing Matterhorn view:  
+£11pppn

Special offers available



Available January - October Bedrooms: 25  
4 night guide price per person from £820 Bed & Breakfast  
or from £998 Half Board



**ZERMATT**  
Hotel Julen ★★★★★

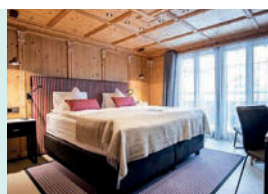
*Why we love this hotel...* a charming, family-run hotel with a tradition of hospitality. The Julen is centrally located and benefits from 'dine around' with the nearby Alpenhof. The lounge bar is a convivial place for drinks and there is a large spa with pool. Blankets in the rooms are made with wool from the hotel's own sheep! Station transfers included.

Chalet-style hotel with great facilities

C | Chalet style room

B | Matterhorn view: +£29pppn

A | Superior comfort room: +£35pppn



Available January - October Bedrooms: 37  
4 night guide price per person from £1,071 Bed & Breakfast  
or from £1,339 Half Board



**ZERMATT**  
Chalet Hotel Schoenegg ★★★★★

*Why we love this hotel...* magnificent, slightly elevated position with fabulous views. The kitchens are renowned for excellent cuisine and the lounge and bar have a lively ambiance. Guests will enjoy the sun terrace with its superb Matterhorn views and the new swimming pool and Infinity spa. This friendly hotel is family run and station transfers are included.

Outstanding Matterhorn views

B | North facing Charme room

A | Charme Matterhorn view with  
balcony: +£22pppn

Special offers available



Available January - April & June - October Bedrooms: 37  
4 night guide price per person from £1,066 Bed & Breakfast  
or from £1,312 Half Board



**ZERMATT**  
Hotel Alex ★★★★★

*Why we love this hotel...* unique family-run hotel, reminiscent of an opulent alpine lodge. The Alex is ideally located in the village and has a restaurant renowned for its grilled fish and meat. Relax in the lounge with its cosy sofas or try the impressive spa with grotto pool. A wide choice of games and sports are also on offer. Station transfers included.

Distinctive and snug hotel  
**B** | Classic room  
**A** | Deluxe: +£22pppn  
 Special offers available



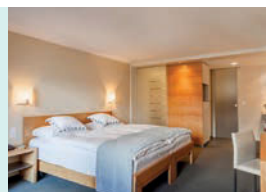
Available January - September Bedrooms: 84  
 4 night guide price per person from £1,089 Bed & Breakfast  
 or from £1,250 Half Board (Jun-Oct)



**SAAS-FEE**  
Hotel Allalin ★★★★★

*Why we love this hotel...* a family-run hotel combining modern comforts with a traditional warm alpine welcome. Close the village centre, the Allalin is well known for its high standard of cuisine including a lavish buffet breakfast. Guests enjoy relaxing in the bar and the pleasant gardens, and there is a sauna and whirlpool. Bus station transfers included.

Friendly welcome and great food  
**B** | Standard room  
**A** | Superior: +£18pppn  
 Special offers available



Available January - March & June - September Bedrooms: 30  
 4 night guide price per person from £890 Bed & Breakfast  
 or from £983 Half Board

# Hotels

Personally selected for you

We have worked with the majority of these hotels for many years and can personally recommend them for a comfortable stay and a friendly welcome. Full hotel descriptions can be found on our website. We will use our expertise to find the ideal hotel for your stay; we also have access to hundreds more hotels across Switzerland, in case you don't see what you're looking for here.

Read more about the resorts in which these hotels are located:

**ZERMATT** page 64  
**SAAS-FEE** page 66

## Always included

**FLIGHTS + HOTELS + RESORT TRANSFERS**

- Flights London-Zurich (and London-Geneva) including taxes and hold baggage (other flights are available from around the UK)
- Rail or rail & bus travel to resort (2nd class)
- Rail/bus station transfer to hotel where stated
- Hotel accommodation (based on 2 sharing) with breakfast, or breakfast & dinner
- Half Fare Card for reduced prices for days out on trains, boats and buses throughout Switzerland
- Saastal Card offering free cable car and bus travel around the Saas-Fee area
- Personalised, fully detailed itinerary sent with all tickets
- Financial protection ATOL 3148

## Upgrades and flexibility

Just let us know! Mountain view rooms add a magical touch to your holiday and are highly recommended.

Hotel guide prices shown are for 4 nights, but we can provide bespoke quotations for any duration.

# Picturesque

 MOUNTAIN HOLIDAYS



## KLOSTERS

### Hotel Sunstar ★★★★★

*Why we love this hotel...* a wonderful place to get away from it all. Chalet-style, the Sunstar enjoys an idyllic location at the peaceful end of the village and boasts panoramic views. The cuisine is excellent and for relaxation there is a cosy bar, attractive garden with loungers, and a spa with indoor pool, sauna, and steam bath. Station transfers included.

Relax in alpine perfection

- C | Comfort room
- B | Superior with balcony: +£7pppn
- A | Premium with balcony: +£15pppn



Available January - April & June - October Bedrooms: 59  
4 night guide price per person from £860 Bed & Breakfast  
or from £1,129 Half Board



## DAVOS

### Morosani Hotel Schweizerhof ★★★★★

*Why we love this hotel...* stylish and centrally located, the hotel offers great value for a quality alpine holiday. The refined Italian restaurant has an enticing menu, while the second restaurant and the bar offer a modern, relaxed setting. Be sure to try the well-equipped SENSES spa after your day exploring the mountains. Station transfers included.

Heart of Davos relaxation & style

- B | Standard room
  - A | South facing with balcony:  
+£17pppn
- Special offers available



Available January - April & June - October Bedrooms: 90  
4 night guide price per person from £845 Bed & Breakfast  
or from £998 Half Board



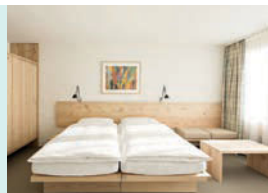
## ST. MORITZ

### Hotel Hauser ★★★

*Why we love this hotel...* modern, family-run hotel in the heart of town. Specialising in international and local Engadin cuisine, in summer the hotel also offers entertaining Piöda evenings where diners grill food on hot stones. The Roo bar with its sun terrace is perfect for an apéritif or a treat from the hotel's own confiserie. Station transfers included.

Enjoy the lively bar and sun terrace

- B | Standard room
  - A | Comfort: +£11pppn
- Special offers available



Available January - October Bedrooms: 51  
4 night guide price per person from £928 Bed & Breakfast  
or from £1,129 Half Board



## ST. MORITZ

### Hotel Schweizerhof ★★★★★

*Why we love this hotel...* with magnificent views over the lake and mountains, the centrally located & family-run Schweizerhof dates from the 19th century. Modern comforts include an elegant lounge and bar and excellent cuisine in the restaurant with its sun terrace. The spa boasts a relaxation area with spectacular alpine views. Station transfers included.

Well recommended & glorious views

- B | Standard north facing room
  - A | Lake view or corner room:  
+£27pppn
- Special offers available



Available all year Bedrooms: 82  
4 night guide price per person from £977 Bed & Breakfast  
or from £1,290 Half Board



**PONTRESINA**  
Hotel Bernina ★★★

*Why we love this hotel...* delightful family-run hotel, centrally located on the Via Maistra in Pontresina. The hotel has two restaurants and prides itself on excellent cuisine based on fresh produce and local recipes. There is also a sauna, and a garden and terrace area in which to relax after your day exploring the mountains. Station transfers included.

Family run with a warm welcome  
**B** | Standard room  
**A** | Superior with mountain view:  
 +£11pppn



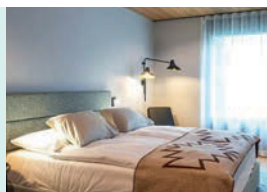
Available January - April & June - October Bedrooms: 41  
 4 night guide price per person from £924 Bed & Breakfast  
 or from £1,125 Half Board



**PONTRESINA**  
Hotel Sunstar ★★★★★

*Why we love this hotel...* it's brand new with a fresh design and concept. Choose from a standard room or a loft room with kitchenette - either way, a fine buffet breakfast is included. You can also enjoy drinks and fresh local dishes in the Mountain Lounge & Terrace (with an amazing view). For relaxation there is a garden and wellness area. Station transfers included.

Modern mountain hideaway  
**B** | Mountain Style room  
**A** | Large Mountain Living loft with  
 kitchenette: +£70pppn



Available all year Bedrooms: 46  
 4 night guide price per person from £998 Bed & Breakfast

# Hotels

Personally selected for you

We have worked with the majority of these hotels for many years and can personally recommend them for a comfortable stay and a friendly welcome. Full hotel descriptions can be found on our website. We will use our expertise to find the ideal hotel for your stay; we also have access to hundreds more hotels across Switzerland, in case you don't see what you're looking for here.

Read more about the resorts in which these hotels are located:

- KLOSTERS** page 68
- DAVOS** page 68
- ST. MORITZ** page 70
- PONTRESINA** page 70

## Always included

### FLIGHTS + HOTELS + RAIL TO RESORT

- Flights London-Zurich including taxes and hold baggage (other flights are available from around the UK)
- Rail travel to resort (2nd class)
- Station transfer to hotel where stated
- Hotel accommodation (based on 2 sharing) with breakfast, or breakfast & dinner
- Half Fare Card for reduced prices for days out on trains, boats and buses throughout Switzerland
- Engadin Card offering free mountain travel around the St. Moritz/Pontresina area
- Personalised, fully detailed itinerary sent with all tickets
- Financial protection ATOL 3148

**Upgrades and flexibility**  
 Just let us know! Mountain view rooms add a magical touch to your holiday and are highly recommended.  
 Hotel guide prices shown are for 4 nights, but we can provide bespoke quotations for any duration.





Appenzell region

# Historic



These resorts may be less well known but come highly recommended for a Swiss holiday. They are all bursting with history. Chur in the Graubünden region is Switzerland's oldest city, while Brig in the Valais was an important trading point on the Simplon route across the Alps. Appenzell is a small town in Eastern Switzerland which boasts traditional historical buildings and customs. As well as exuding charm, each of the resorts has a good number of excursions to enjoy, with great transport links.

Come and discover these hidden Swiss treasures.



## Charming Brig

The Simplon Pass was in years gone by one of the most important trading routes across the Alps and the town of Brig grew rich thanks to the travellers and merchants who stopped here. The history dates back to Roman times and the rich heritage is evident in the well-preserved architecture. Most notable is Stockalper Palace, a grand 17th-century baroque residence with distinctive towers and beautiful gardens. As well as the charming centre, Brig is the perfect place from which to explore the nearby Aletsch Glacier – an awesome sight which will linger long in your memory.

Find more information on these pages:	Resort Information	Hotel Information
<b>Brig</b>	82-83	88

## Historic Chur

Chur is located in a picturesque alpine region and serves as the capital of Graubünden. Its old town is a well-preserved gem, featuring narrow, winding streets, medieval buildings, and vibrant cultural sites that transport visitors back in time. One of Chur's most prominent landmarks is the cathedral, a stunning example of Gothic architecture dating back to the 12th century. The Rätisches Museum offers an in-depth look at the region's rich history. Chur is also a gateway to the Alps with excellent transport connections taking you to beautiful mountain spots offering breathtaking views at every turn.

Find more information on these pages:	Resort Information	Hotel Information
<b>Chur</b>	84-85	88





## Undiscovered Appenzell

This picturesque town in northeastern Switzerland is renowned for its idyllic landscapes, traditional culture, and vibrant local customs. The town's historic streets are lined with colourful, fresco-adorned buildings, showcasing traditional Swiss craftsmanship. The surrounding landscape is a paradise for walkers: the nearby Alpstein massif offers scenic trails to Ebenalp and Säntis (the highest peak in the region). Walking here is generally quieter than in the more famous regions of Switzerland and the blend of history and natural beauty makes for a delightful destination. A true hidden gem.

Find more information on these pages:      Resort Information      Hotel Information

<b>Appenzell</b>	86-87	89
------------------	-------	----



## At the heart of the Glacier Express route

The famous Glacier Express journey runs between St. Moritz and Zermatt, but there is a shorter journey available between Brig and Chur. This section of the route takes around 4 hours and encompasses highlights such as the natural beauty of the Rhine Gorge and the highest point of the route - the Oberalp Pass at 2,033m. Why not stay in both Brig and Chur and enjoy the Glacier Express in between.

## Waterfall, river and lake

Appenzell serves as gateway to three watery wonders. From the little town you can take a day trip to the vast reaches of Lake Constance (Bodensee), which forms part of the Swiss border with Austria and Germany. Alternatively, why not take a river cruise along the Rhine to Schaffhausen meandering through villages including the picturesque Stein-am-Rhein. A rail excursion to the mighty Rhine Falls - Europe's most powerful waterfall - is also highly recommended.



VALAIS **Brig**

A fascinating town at the historical crossroads of the Alps

Fly to Zurich or Geneva under 2 hrs

2 hr 30 mins train transfer

Come and discover **Brig** and you will not be disappointed. This historical town is not only a departure point for the Glacier Express but an ideal base from which to visit scenic Switzerland at its best. Zermatt, Saas-Fee and the Aletsch Glacier offer the high Alps experience, while in Brig itself you can take a step back in time at the fascinating Stockalper Palace.



Visit the **Aletsch Glacier Arena**, a UNESCO World Heritage Site with dramatic views of Europe's longest glacier

All year

*With an Aletsch Explorer Pass you can spend a full day visiting favourite viewing points such as the Riederalp, Bettmeralp & Eggishorn. Explore the area at your leisure: enjoy the walks with panoramic restaurants and magnificent views across this natural phenomenon.*

Be in awe and feel the power of nature as you experience the views of the great Aletsch Glacier.

From Brig take the local train to a choice of cable cars transporting you to over 2,200m with incredible views over the glacier. A highlight of your visit to the Aletsch Arena will be the well prepared walking trails between the mid stations of the cable cars, offering remarkable, ever-changing views, and local restaurants along the way. Purchase the Explorer Pass locally.





## Not to be missed **Travel the Simplon Pass through the Alps to Domodossola**

All year

*Full day visit following in the footsteps of Napoleon and countless travellers and traders who crossed the Alps in days gone by. Experience an unforgettable journey by PostBus as it slowly winds its way over the famous Simplon Pass. There are sweeping views which open up over the sunny alpine terraces and after 2 hours you'll disembark in the small Italian town of Domodossola. Here you can wander among the attractive piazzas and find a trattoria for lunch. The train home through the tunnel takes just an hour.*

## Getting around

Travel from Brig is easy, and you enjoy discounted excursions with the **Half Fare Card** which is included in your price. If you like to be out exploring, we recommend upgrading to the **Swiss Travel Pass** which covers UNLIMITED free journeys on a huge range of rail, buses and lake steamers. You also benefit from bypassing queues at the ticket offices.

## Other excursions from Brig

- Full day Lötschberg railway and lake cruise to Interlaken
- Half day walking & views at Rosswald
- Unforgettable Furka steam railway – full day
- Half day at the Stockalper Palace in Brig

## Two centre scenic rail holidays

Brig works well with the Glacier Express, Centovalli Line or Lötschberg Line – see page 12.



## Zermatt – The Matterhorn village

1,608m – All year

*Full day visit from Brig by a scenic journey which climbs slowly in one and a half hours to the car-free village of Zermatt. You immediately become aware of the influence of the Matterhorn which made this village famous in 1865 when it was successfully climbed for the first time. There is now a fascinating museum about the controversy and tragedy that surround the climb. You may like to add a visit to the high Alps with a return trip on the Gornergrat cog railway to see a mountain panorama amongst the finest in the world.*

## Always included

**FLIGHTS + HOTELS + RAIL TO RESORT**

**PLUS!** The fantastic **Half Fare Card** which gives you heavily discounted prices for all your excursions from Brig. We are fully bonded with ATOL for your financial protection.

## Holiday suggestions

- **7 nights Brig**  
Full day visiting the Aletsch Glacier, full day to Zermatt, full day by rail and lake cruise to Interlaken, half day to Stockalper Palace
- **4 nights in Brig and 3 nights in Chur**  
Classic Glacier Express two centre holiday

Choose your hotel... Our selected 3 and 4 star hotels are featured on page 88

# Historic

 **HIDDEN GEMS**

## Switzerland's oldest town and gateway to the scenic Bernina Line

Fly to Zurich in under 2 hrs  
1 hr 40 mins train transfer

Imagine an interesting old town, wonderful restaurants and a great variety of shops in this regional capital. With the coming of the railways, **Chur** developed as an essential hub for top scenic journeys including the Glacier & Bernina Express and the delightful Arosa Line. You can also visit the dramatic Rhine Gorge and Brambrüesch with alpine views.



### Arosa Line - an exceptional scenic railway to the mountain glory of Arosa with the possibility of a cable car to Weisshorn

1,800m – All year

*Your full day in the mountains starts with an unforgettable journey which takes just 1 hour to climb 1,000m to Arosa, starting with a sedate trundle down the middle of Chur's historic street.*

Arosa is an attractive village and one of the highest resorts in Switzerland. It is reached by a truly scenic train journey which offers beautiful views and the famous Langwieser Viaduct. Arosa with its lakes is a delight to walk around and there are many walking trails for you to follow. You could also take the cable car to Weisshorn at 2,653m where you will be overwhelmed by more than 400 mountain peaks, and you may even see the Arosa bears!





## Not to be missed **The awesome sight of the Rhine Gorge, an unforgettable experience**

All year

*A memorable half day to witness the power of nature. 10,000 years ago a huge landslide dammed up the river to create a lake. Over time, the river Rhine pushed its way through the rubble and the lake drained, leaving the amazing spectacle of the gorge that we see today. It is very deserving of its nickname: the Grand Canyon of Switzerland. There are several marked walking trails to enjoy such as the Senda Ruinalta which takes in forests, Lake Cauma, and a bird's eye view of the gorge from the Il Spir observation deck.*



## Getting around

Chur is directly on many scenic routes. The **Chur Guest Card** offers free travel on local transport. You enjoy discounted excursions with the **Half Fare Card** which is included in your price. If you like to be out exploring, we recommend upgrading to the **Swiss Travel Pass** which covers UNLIMITED free journeys on a huge range of rail, buses and lake steamers. You also benefit from bypassing queues at the ticket offices.

## Other excursions from Chur

- Full day Bernina Express day trip
- Train to St. Moritz on the famous Albula route – full day
- Half day to scenic Pradaschier mountain
- Maienfeld village, the inspiration for the Heidi tales – full day

## Two centre scenic rail holidays

Chur works well with the Glacier Express and Bernina Express – see page 12.



## **Brambrüesch cable car** – Chur's mountain with panoramic views

1,595m – June to October

*Half day visit. The cable car with delightful views whisks you from Chur up to the middle station where you can visit the rustic Känzeli restaurant for your morning coffee before taking a two person gondola to the high plateau of Brambrüesch. Here you are greeted by glorious alpine summer meadows, beautiful flora and awesome panoramic views - and of course a mountain restaurant to relax in. Brambrüesch is a wonderful walking area for you to get the very best views.*

## Always included

**FLIGHTS + HOTELS + RAIL TO RESORT**

**PLUS!** The fantastic **Half Fare Card** which gives you heavily discounted prices for all your excursions from Chur. We are fully bonded with ATOL for your financial protection.

## Holiday suggestions

- **7 nights Chur**  
Full day Bernina Express to Tirano, full day scenic rail to Arosa, full day Rhine Gorge, half day Brambrüesch local mountain
- **4 nights in Chur and 3 nights in Brig**  
Two centres featuring the famous Glacier Express

Choose your hotel... Our selected 4 star hotels are featured on page 88

# Historic

 **HIDDEN GEMS**

EASTERN SWITZERLAND



# Appenzell

Switzerland's best kept secret – a beautiful region with so much to enjoy

Fly to Zurich in under 2 hrs  
1 hr 40 mins train transfer

The historic town of **Appenzell** is full of surprises, surrounded by a beautiful landscape of rolling hills & mighty rock formations. The pedestrianised centre has ornate frescos from the 16th century. Mountain cable cars whisk you up to memorable walks and fabulous views; other visits include Lake Constance, picturesque Stein-am-Rhein, and the Rhine Falls.

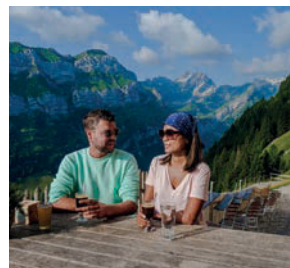


## Ebenalp cable car and Aescher Restaurant - captured a thousand times on postcards

1,644m - May to November

*A full day of adventure starts with a short train journey from Appenzell to Wasserauen to connect with the cable car to the top mountain station of Ebenalp.*

From Ebenalp take the 15 minute walk down a well-maintained rocky mountain path to the prehistoric caverns of Wildkirchli: Neanderthals inhabited these caves and there are traces of giant cave bears – please come inside! Continue to the truly spectacular Aescher mountain inn dating back to 1860, nestled against the cliff face in its imposing natural surroundings. Return to Ebenalp and its Alpine Garden by the same path, or via Füssler on a more challenging route.





## Not to be missed **A visit to glorious Lake Constance with a variety of cruises to enjoy**

Recommended April to October

*A day out to one of Europe's largest lakes situated at the point where Switzerland meets Germany and Austria. This is a beauty spot well known for its cruises, such as the scenic trips from Romanshorn to Kreuzlingen or Rorschach. If you prefer to enjoy the lake from the shore, there are plenty of walking and cycling trails as well as the pleasure of discovering lakeside villages for lunch. The Lake Constance rack railway takes you from Rorschach to the attractive village of Heiden.*

## Getting around

Stay a minimum of 3 nights and Appenzell gives you their **Holiday Card** with free travel on local transport, as well as journeys on three local cable cars. You also enjoy additional discounted excursions with the **Half Fare Card** which is included in your price. If you like to be out exploring, we recommend upgrading to the **Swiss Travel Pass** which covers UNLIMITED free journeys on a huge range of rail, buses and lake steamers. You also benefit from bypassing queues at the ticket offices.

## Other excursions from Appenzell

- Half day to historical St. Gallen
- Full day Voralpen Express to Lucerne
- Cable cars to Hoher Kasten & Jakobsbad-Kronberg – full day
- Full day Stein-am-Rhein and Rhine cruise

## Two centre scenic rail holidays

Appenzell works well with the Voralpen Express – see page 12.



## The Rhine Falls – Stand in the middle of the largest waterfall in Europe!

All year

*Full day visit to the Rhine Falls. Rail from Appenzell to Schaffhausen, then connect by bus or train in ten minutes to this incredible natural wonder which is at its most powerful in June/July. Get to see the Rhine Falls up close - take a round trip in the Rhine Falls basin, or a boat ride to the rocks in its dramatic midst and climb up! Schloss Laufen towers above the falls which is closely linked with the history of the Rhine Falls and has an interesting exhibition.*

## Always included

**FLIGHTS + HOTELS + RAIL TO RESORT**

**PLUS!** The fantastic **Half Fare Card** which gives you heavily discounted prices for all your excursions from Appenzell. We are fully bonded with ATOL for your financial protection.

## Holiday suggestions

- **7 nights Appenzell**  
Full day Ebenalp and Aescher Inn, full day Lake Constance & cruise to Stein-am-Rhein, full day Schaffhausen & Rhine Falls, half day St. Gallen
- **4 nights in Appenzell and 3 nights in Lucerne**  
Voralpen Express connection for a two centre stay

Choose your hotel... Our selected 3 and 4 star hotels are featured on page 89

# Historic

 **HIDDEN GEMS**



**BRIG**  
Hotel Ambassador ★★★★★

*Why we love this hotel...* situated in a quiet yet central location close to the railway station and town squares, the delightful and atmospheric Ambassador is perfect for exploring Brig. The food here is superb! Indeed, the hotel's historic Des Cheminots brasserie even features in a fine dining guide. Your hosts are on hand to ensure a comfortable stay.

Excellent restaurant, central location

- B | Standard room
  - A | Deluxe: +£39pppn
- Special offers available



Available all year Bedrooms: 27  
4 night guide price per person from £856 Bed & Breakfast  
or from £1,057 Half Board



**BRIG**  
Hotel Stockalperhof ★★★

*Why we love this hotel...* a modern hotel in the heart of historic Brig where you can relax. La Terrazza restaurant and terrace has a cosy atmosphere and is the setting for your buffet breakfast as well as providing a welcoming spot in which to enjoy a drink. The popular Italian menu boasts a variety of dishes featuring pasta freshly made in the restaurant kitchens.

Friendly hotel, great Italian restaurant

- C | Cosy room
- B | Roof room, balcony: +£6pppn
- A | Premium with balcony: +£15pppn



Available all year Bedrooms: 32  
4 night guide price per person from £874 Bed & Breakfast

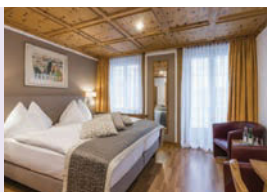


**CHUR**  
Hotel Stern ★★★★★

*Why we love this hotel...* it is a joy to stay in an inn dating back 300 years, well located in the town centre. The half board option is highly recommended for your stay as the restaurant has a reputation for excellent cuisine. There is a lounge and a terrace, perfect for drinks on warm evenings. Family-run, with a warm welcome to the Stern's rich history.

Historic hotel, renowned restaurant

- B | Standard room
- A | Superior: +£26pppn



Available all year Bedrooms: 65  
4 night guide price per person from £890 Bed & Breakfast  
or from £1,114 Half Board

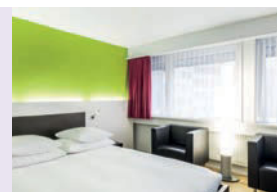


**CHUR**  
Hotel ABC ★★★★★

*Why we love this hotel...* the ABC is a stylish base for your stay and is centrally located close to the train station and town centre. The hotel is furnished with simple but elegant materials. Facilities here include a light and airy breakfast room, a welcoming bar - perfect for drinks after a day exploring the region - and a small spa with sauna, steam bath and relaxation room.

Modern living in the heart of town

- B | Superior room
  - A | Deluxe: +£9pppn
- Special offers available



Available all year Bedrooms: 48  
4 night guide price per person from £908 Bed & Breakfast





**APPENZELL**  
Hotel Löwen ★★★

*Why we love this hotel...* a boutique hotel offering traditional comfort and service. There is a breakfast room and half board dinner can be taken in the nearby Sântis. With a small lounge and terrace, this makes a good base from which to explore Appenzell. Guests may request one of the traditional 'Appenzeller' rooms (subject to availability). Station transfers included.

Small hotel charm in a good location  
A | Standard room  
Special offers available



Available all year Bedrooms: 28  
4 night guide price per person from £729 Bed & Breakfast  
or from £975 Half Board



**APPENZELL**  
Romantik Hotel Sântis ★★★★★

*Why we love this hotel...* it is perfectly located on the delightfully historic town square and offers an excellent meal in its 1st floor restaurant. There is also a typical Appenzeller restaurant serving regional specialities on the terrace, which opens onto the main square. The family-run Sântis is a real gem, with a bar, lounge and small wellness area. Station transfers included.

Historic hotel, rich in atmosphere  
B | Standard room  
A | Deluxe: +£18pppn  
Special offers available



Available all year Bedrooms: 36  
4 night guide price per person from £887 Bed & Breakfast  
or from £1,133 Half Board

# Hotels

Personally selected for you

We have worked with the majority of these hotels for many years and can personally recommend them for a comfortable stay and a friendly welcome. Full hotel descriptions can be found on our website. We will use our expertise to find the ideal hotel for your stay; we also have access to hundreds more hotels across Switzerland, in case you don't see what you're looking for here.

Read more about the resorts in which these hotels are located:

- BRIG** page 82
- CHUR** page 84
- APPENZELL** page 86

## Always included

### FLIGHTS + HOTELS + RAIL TO RESORT

- Flights London-Zurich (or London-Geneva for Brig) including taxes and hold baggage (other flights are available from around the UK)
- Rail travel to resort (2nd class)
- Station transfer to hotel where stated
- Hotel accommodation (based on 2 sharing) with breakfast, or breakfast & dinner
- Half Fare Card for reduced prices for days out on trains, boats and buses throughout Switzerland
- Local card offering free travel and cable cars around the Appenzell region
- Personalised, fully detailed itinerary sent with all tickets
- Financial protection ATOL 3148

## Upgrades and flexibility

Just let us know! Superior rooms add a magical touch to your holiday and are highly recommended.

Hotel guide prices shown are for 4 nights, but we can provide bespoke quotations for any duration.

# Historic



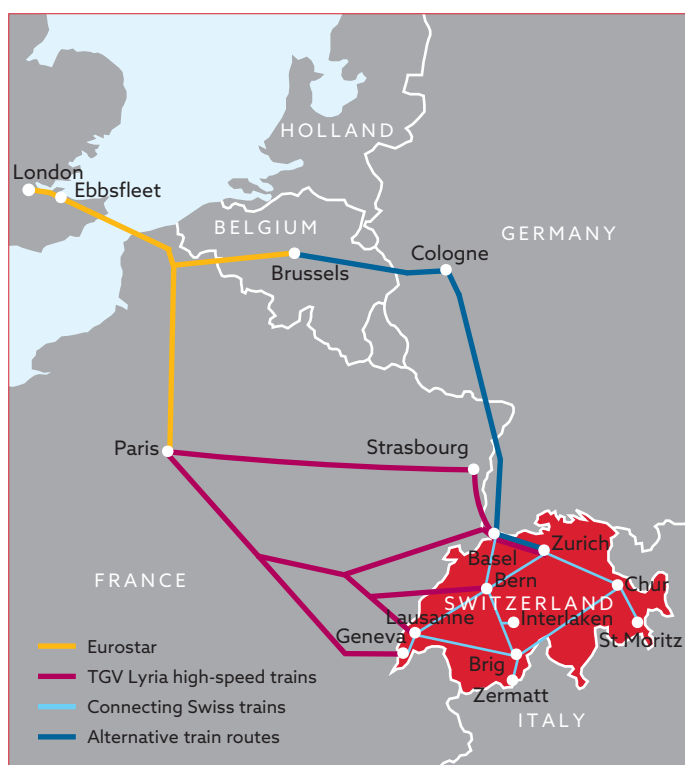
# Switzerland by rail

Rail travel to Switzerland is growing in popularity as more people appreciate the comfort and relaxed style and although there are station and train changes it can be less hassle than air travel. The railways have also continued to develop the routes through to Switzerland, offering faster trains with more choice and good connections into the Swiss rail network for any resort in Switzerland.



## Benefits of travelling by Rail

- ✓ Shorter check in time
- ✓ Countryside views across the continent
- ✓ Comfortable seats with plenty of legroom
- ✓ Opportunity to walk around and stretch your legs
- ✓ No weight limit for your suitcases
- ✓ Sustainable way to travel



## London - Paris - Basel

Eurostar high speed link from London St Pancras to Paris Gare du Nord offers the most convenient route with onward travel from Paris Gare de Lyon by the French high speed TGV service to Basel.

## Transfer between stations in Paris

**Gare du Nord to Gare de Lyon** These stations are within 2 stops on the RER line with escalators and lifts at both stations. However, we would recommend travelling by taxi (payable locally) as a more convenient option.

**Gare du Nord to Gare de L'Est** These stations are very close together and should be no more than an easy 10 minute walk. We will provide directions with your travel documents.

## Break your journey with an overnight stay in Paris

Paris is one of the most exciting cities in Europe. Make the most of your journey by spending a night or two in the City of Light at the start or the end of your holiday.

## Alternative trains

Another popular rail option is to travel via Strasbourg – although a slightly longer journey with an additional change of train, we would still recommend this routing as the change in Paris is a short walk from Gare du Nord to Gare de l'Est.

There are also alternative Eurostar train departures which connect with various trains from Paris Gare de Lyon to Lausanne, Geneva, Bern or Zurich which may prove more convenient, depending on your destination. You may also like to consider travelling via Brussels and Cologne.



## Your trains

### Eurostar



Travel on Eurostar is in spacious, air-conditioned carriages and in standard class the buffet cars serve alcoholic and non-alcoholic drinks plus sandwiches, crisps and hot snacks. Please note that there is no seating in the bar area.

Why not upgrade to Eurostar Plus and in addition to the improved seating and space, a meal appropriate to the time of day is included and served to you at your seat. This would be continental breakfast up to 11am and after 11am a light meal with a choice of 2 chilled dishes and a dessert, plus wine, beer or soft drink, and tea or coffee. Special meals can be requested at the time of booking.

### Luggage

The allowance is two medium sized bags per person with a maximum length of 85cm plus one item of hand luggage. Suitcases can be placed in the storage areas by the doors and hand luggage can be placed in the overhead racks.



## Example timetable

These are example train times, showing travel to Switzerland. The suggestions allow plenty of time for your travel onwards from Basel to your chosen destination (and vice versa on the return). It is possible to travel from London to your Switzerland hotel in one day, or you may like to stay overnight in Paris or Basel.

		↓	↑	↓	↑
London		07.01	20.30	09.31	21.30
Paris Gare du Nord	arr	10.19	-	12.48	-
Paris Gare du Nord	dep	-	19.11	-	20.12
Paris Gare de Lyon	arr	-	17.38	-	-
Paris Gare de Lyon	dep	12.22	-	-	-
Paris Gare de l'Est	arr	-	-	-	18.16
Paris Gare de l'Est	dep	-	-	13.51	-
Strasbourg		-	-	15.51	16.09
Basel		15.26	14.34	17.08	14.51

Timings and connections vary by day of week and are subject to change.



## TGV Lyria



The journey through to Switzerland on the modern TGV trains is comfortable thanks to the spacious carriages. There is a buffet car where you can purchase hot or cold meals and vending machines for drinks and snacks. Choose from standard class or first class, which has larger, reclining seats and complimentary magazines and newspapers.

### Luggage

The allowance is two bags per person plus hand luggage. Storage racks are at the end and sometimes in the middle of each carriage.

### Price guide

Rail currently attracts a supplement over the guide price shown in this brochure for travel by air. This will vary by date of travel. You will also need to add a supplement for 1st class onward travel in Switzerland if required. We will only be able to advise a final price when we can actually book your seats which, because of the reservations systems used by the railways, will not be until 90 days before your departure. However, we still recommend early booking as all other arrangements are held for you and your reservations are registered when you make your booking.

# Flights to Switzerland

## Wide choice of flights from around the UK

We offer scheduled flights with trusted carriers, most arriving in Switzerland in under 2 hours from take off. The majority of our recommended flights allow you time to travel comfortably between your arrival airport and your chosen resort, with morning departures and late afternoon returns. Flights are available at other times however you may wish to consider an overnight stay en route. Using different Swiss airports for your outward and return flights is allowed providing it is with the same airline. This is particularly beneficial when you are planning a two centre holiday.

### BRITISH AIRWAYS

*One of the world's leading international airlines with direct flights from London to Zurich or Geneva.*

**Refreshments** Passengers are offered a bottle of water and small snack. The menu to purchase on board includes sandwiches designed by Tom Kerridge. Can be pre-ordered.

**Hold baggage allowance** 23kg per person included.

**Upgrade** Club Class offers a dedicated check-in and lounge, 32kg luggage allowance and a meal with wine on board. Please ask for prices.

**Connect from** Belfast, Aberdeen, Edinburgh, Glasgow, Jersey, and Newcastle. Supplements on request.

### easyJet

*easyJet have the widest choice of flights to Switzerland from around the UK (Edinburgh, Manchester, Birmingham, Luton, Gatwick, Bristol) to Geneva and a good service from Gatwick and Luton to Zurich. During the winter, you can also fly from Belfast, Aberdeen, Glasgow, Newcastle, Liverpool, Stansted, Southend, Southampton & Bournemouth. For added convenience, we will check you in and send you your boarding passes so you may go straight to the bag drop area.*

**Refreshments** Snacks and drinks available to buy on board.

**Hold baggage allowance** 23kg per person.

**Upgrade** We can book seats with extra leg room and speedy boarding options. Please ask for prices.

**Please note** We will require an increased, non-refundable deposit of at least £250 per person as payment to the airline will have to be made at the time of booking.



### SWISS

*The national airline of Switzerland has a reputation for service and punctuality, with direct flights from London to Zurich and Geneva, and Birmingham, Manchester and Edinburgh to Zurich.*

**Refreshments** All passengers receive a bottle of Swiss mineral water and a small chocolate. Drinks and snacks are available to buy on board, or can be pre-booked.

**Hold baggage allowance** 23kg per person.

**Upgrade** Business Class offers a dedicated check-in and lounge, 2 x 32kg luggage allowance and in-flight catering. Please ask for prices.



### Jet2.com

*Available during the winter, jet2.com fly from Stansted, Birmingham, Bristol, East Midlands, Manchester, Leeds/Bradford, Newcastle, Edinburgh and Glasgow to Geneva. This is an award-winning airline with great service. As with easyJet, we will check you in and post your boarding passes to you.*

**Refreshments** Snacks and drinks available to buy on board.

**Hold baggage allowance** 22kg per person.

**Upgrade** We can book seats with extra leg room - please ask for prices.

**Please note** We will require an increased, non-refundable deposit of at least £250 per person as payment to the airline will have to be made at the time of booking.



## Travelling from the airport to your resort

Your onward journey from airport to resort is by train, offering comfort, room to move around and the opportunity to sit back and relax with refreshments. Swiss Federal Railways are amongst the most efficient in the world and operate with the precision of a Swiss watch! An added convenience is that there are mainline stations situated within the terminal buildings at Zurich and Geneva airports. Trains depart from the airports to most resorts every hour and your personalised itinerary will show your recommended train times. On arrival at many resorts, you will be met at the station by the hotel's porter or a taxi. Where this is not the case we will provide instructions of how to reach the hotel.

**First class rail travel** is available at a supplement (no additional charge for children under 16). First class carriages are generally quieter with roomier seats. Start your journey in style.

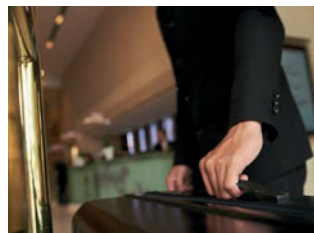
### Flight Luggage

Swiss Railways has a unique system for flights to Zurich which means you can check in your luggage at the UK airport and then, depending on where you are staying, it will either be delivered to your hotel or you can collect it from the local station. For the return journey the luggage goes direct from a number of resorts to Zurich airport baggage office where you collect it and proceed to check in. To ensure that you receive your luggage the same day, your flight will need to land in Switzerland by 11.45 and for the return journey your flight must depart after 16.00. In case of any unexpected delays we strongly recommend that essential items including medication are taken in your hand luggage.

The Flight Luggage charge is £22 per item in each direction. To receive it on the same day there is a one-off express shipping charge of £28 in each direction. Both the standard and the express service are only available with certain resorts – please check with us for up to date information

### Minimum journey times within Switzerland

	Zurich Airport	Geneva Airport
Appenzell	1hr 40mins	4hrs 45mins
Ascona	3hrs	5hrs 35mins
Bönigen	2hrs 30mins	3hrs 15mins
Brig	2hrs 25mins	2hrs 35mins
Brunnen	1hr 20mins	4hrs
Chur	1hr 35mins	4hrs 20mins
Davos	2hrs 45mins	5hrs 25mins
Grindelwald	3hrs	3hrs 40mins
Interlaken	2hrs 10mins	2hrs 55mins
Kandersteg	2hrs 30mins	3hrs 10mins
Klosters	2hrs 15mins	4hrs 55mins
Lausanne	2hrs 30mins	50mins
Locarno	2hrs 30mins	5hrs 10mins
Lucerne	1hr 10mins	3hrs
Lugano	2hrs 15mins	4hrs 55mins
Montreux	2hrs 55mins	1hr 10mins
Mürren	3hrs 10mins	3hrs 55mins
Pontresina	3hrs 40mins	6hrs 20mins
Saas-Fee	3hrs 20mins	3hrs 35mins
Spiez	1hr 50mins	2hrs 30mins
St Moritz	3hrs 25mins	6hrs 5mins
Vevey	2hrs 50mins	1hr
Weggis	2hrs 15mins	4hrs 10mins
Wengen	3hrs	3hrs 40mins
Wilderswil	2hrs 20mins	3hrs 5mins
Zermatt	3hrs 30mins	3hrs 50mins



### UK luggage delivery service

With the significant changes recently to the Flight Luggage system, we are pleased to offer an alternative luggage delivery service from your home to your Swiss hotel and return. This will be of interest to those whose resort is not served by Flight Luggage and for anyone flying via Geneva or Basel airports.

Your cases are picked up from your home 7 working days before you travel and will be delivered directly to your hotel. As a guide, prices for a return journey start from £205 for one case or £295 for two. One way delivery can also be arranged for a cost in the region of £130 for one case or £185 for two.



Lugano

## General Information

**Reservations** should be made by telephone so that your requirements may be discussed personally. A minimum deposit of £150 per person is required if your holiday is with Swiss International Air Lines. For holidays with flights with any other airline, with rail travel from the UK, and/or with 3 centres or more a minimum deposit of £250 per person will apply. A minimum deposit of £600 per person will be required for holidays including the Glacier Express. We will confirm the exact amount at the time of booking. You will then receive a confirmation invoice which gives full details of the hotel and travel arrangements made. Settlement of the balance is due 10 weeks prior to the departure date. For reservations within 10 weeks full payment is required at the time of booking.

**Payment:** Payments may be made by debit card, credit card or bank transfer. Please note that we do not accept cheques or Amex payments.

**Prices:** The holiday prices and offers shown in this brochure are for travel in 2025. All prices are in £s per person (unless specifically stated) and include flights, rail transfers and accommodation in a twin bedded room with meals as described. Prices for flights and some hotels change frequently. For this reason, the holiday prices shown in this brochure are our best guide but may differ at the time of providing your tailor made quotation. We guarantee that there will be no surcharge to your holiday price once you have booked your holiday.

**Flight delays:** In the event of any delay passengers will be looked after according to the usual practice of the airline.

**Luggage:** Personal luggage allowance with British Airways and SWISS of 23kg per person or 32kg in Business or Club Class. Allowance with easyJet is 23kg and Jet2.com 22kg. These allowances are included in your holiday price.

**Hotel star categories:** The Swiss Hotel Association classifies its hotels in five categories indicated by stars. The SHA star classifications are only given as

a guide to prospective clients. Where a hotel does not belong to the SHA we have determined the star rating in accordance with their standards. All hotels are different in style and furnishings and there can be a variation within a star category which is usually reflected in the price.

**Room descriptions:** The codes used in the brochure are only used as a means of identifying the different types of rooms and should not be read in any other way. Photographs of rooms are shown as a typical example and your room may vary in size and furnishings. Single rooms will usually be smaller.

**Meals:** Half board unless otherwise stated includes a buffet breakfast and dinner. There is often a choice of dishes for the main course of your evening meal.

**Dietary requirements:** Should you need a special diet then you should advise us of your requirements at the time of booking. Vegetarians can be catered for at most of our hotels and many have a vegetarian option on their dinner menu.

**Resort & hotel facilities:** Where hotel facilities include sauna or solarium etc. it does not necessarily mean that they are available without any charge. Some hotels have minimum stays, particularly in winter. Some resort facilities including cable cars may not be available at the beginning or end of the season and operate according to weather conditions.

**Special requests:** We will pass on any special requests to the airline etc. However, as these are dependent on our suppliers we cannot guarantee absolutely that special requests can be complied with. All special requests should be made in writing.

**Local taxes:** These are often payable by guests directly to the hotel at check out. We will indicate on your invoice and accommodation voucher where this is the case.

**Passports & visas:** British citizens must be in possession of a full 10 year passport and children need their own passport. Information regarding passport requirements can be found on the gov.uk

website. British citizens do not currently require a visa for Switzerland. Commonwealth and other passport holders may need a visa and should check with the Swiss Embassy on 0207 616 6000. We do not accept any responsibility if you cannot travel because you have not complied with any passport or visa requirements.

**Please note:** The Europe-wide visa waiver scheme ETIAS may come into operation in 2025. The proposed fee is €7 for those aged 18-70 (free for children and 70+). When the scheme commences, we will provide advice on how to obtain the ETIAS visa waiver online.

**Foreign Office advice:** We recommend that you keep up to date with the advice provided by the Foreign, Commonwealth and Development Office for travel overseas which can be found on [www.gov.uk/foreign-travel-advice/switzerland](http://www.gov.uk/foreign-travel-advice/switzerland)

**Swiss public holidays:** Shops and certain other facilities may be closed on the following dates and you may therefore care to take this into consideration before booking your holiday: 1st January, 18th & 21st April, 29th May, 9th June, 1st August, 1st November, 25th & 26th December. Additional holidays vary by region.

**Copyright:** Unless otherwise stated all materials (pictures and text content) are the intellectual property of The Swiss Holiday Company and may not be copied, distributed, or otherwise disseminated without the written or authorised verbal permission of the Company.

The Swiss Holiday Company would like to offer their grateful thanks to our travel partners for allowing the Company to use materials with their permission. Such materials are also protected by our copyright. The Swiss Holiday Company has made every effort to ensure that all materials including text and pictures are free from third party copyright, however we accept no legal or financial responsibility if any copyright text or pictures have inadvertently been used.

# Conditions of Booking

**1. Our Details** The Swiss Holiday Company is a trading name of Travelco Limited with whom your contract is made and whose registered address is Nucleus House, 2 Lower Mortlake Road, Richmond TW9 2JA.

**2. Your Holiday Booking** When you make a booking you guarantee that you have the authority to accept and do accept on behalf of your party the terms of these booking conditions. A contract will exist as soon as we issue our confirmation invoice. This contract is made on the terms of these booking conditions, which are governed by English Law, and the jurisdiction of the English Courts. You may, however, choose the law and jurisdiction of Scotland or Northern Ireland if you live there and wish to do so.

**3. Paying for Your Holiday** When you make your booking you must pay a minimum deposit of £150 per person if your holiday is with Swiss International Air Lines. For holidays with flights with any other airline, with rail travel from the UK, and/or with 3 centres or more a minimum deposit of £250 per person will apply. A minimum deposit of £600 per person will be required for holidays including the Glacier Express. We will confirm the exact amount at the time of booking. The balance of the price of your travel arrangements must be paid at least 10 weeks before your departure date. If the deposit and/or balance are not paid in time, we shall cancel your travel arrangements. If the balance is not paid in time we shall retain your deposit.

**4. If You Cancel Your Holiday** You, or any member of your party, may cancel your travel arrangements at any time. Written notification from the person who made the booking or your travel agent must be received at our offices. Since we incur costs in cancelling your travel arrangements, you will have to pay cancellation charges as follows (see also the exception below):

Up to 70 days before departure: Loss of deposit.

69 to 42 days before departure: 40% of holiday price

41 to 28 days before departure: 60% of holiday price

27 to 14 days before departure: 80% of holiday price

Less than 14 days: Full holiday cost

If the reason for your cancellation is covered under the terms of your insurance policy, you may be able to reclaim these charges.

**5. If You Change Your Booking** If, after our confirmation invoice has been issued, you wish to change your travel arrangements in any way, for example your chosen departure date or accommodation, we will do our utmost to make these changes but it may not always be possible. Any request for changes to be made must be in writing from the person who made the booking or your travel agent. You will be asked to pay an administration charge of £50 - £100 per person and any further cost we incur in making this alteration. You should be aware that these costs could increase the closer to the departure date that changes are made and you should contact us as soon as possible. Note: Certain travel arrangements may not be changeable after a reservation has been made and any alteration request could incur a cancellation charge of up to 100% of that part of the arrangements.

**6. If We Change or Cancel Your Holiday** It is a term of your booking that we are able to make changes to any aspect of your booking. If the change is insignificant, we will ensure that you are notified about it. Examples of insignificant changes include alteration of your outward/return flights by less than 12 hours, changes to aircraft type, change of accommodation to another of the same or higher standard, changes of carriers. If we are constrained by circumstances beyond our control to alter significantly any of the main characteristics of the travel services that make up your package you will have the rights set out below. We will contact you and you will have the choice of accepting the change or having a refund of all monies paid. You can also accept an alternative holiday, where we offer one (we will refund any price difference if the alternative is of a lower value). We will tell you the procedure for making your choice. Please read any notification of changes carefully and respond promptly as if you do not respond to us within the timescale given your booking may be cancelled. If you choose to accept a refund we will pay compensation as detailed below except where the significant change is due to unavoidable and extraordinary circumstances, which means a situation beyond our control, the consequences of which could not have been avoided even if all reasonable

measures had been taken. The compensation that we offer does not exclude you from claiming more if you are entitled to do so.

Up to 42 days before departure: None

41 to 25 days before departure: £20

24 to 14 days before departure: £25

13 to 7 days before departure: £30

Less than 7 days: £40

**7. Your Holiday Price** We unconditionally guarantee that there will be no surcharge to your holiday price after you have made your booking. However, we reserve the right to increase our prices at any time before you book.

**8. Our Liability to You** You must inform us without undue delay of any failure to perform or improper performance of the travel services included in this package. If any of the travel services included in your package are not performed in accordance with the contract, or are improperly performed, by us or the travel service suppliers, and this has affected the enjoyment of your travel arrangements, you may be entitled to an appropriate price reduction or compensation or both. We will not be liable where any failure to perform or improper performance of the travel services is due to: you or another member of your party; or a third party unconnected with the provision of the travel services in the package and is unforeseeable or unavoidable; or unavoidable and extraordinary circumstances, which means a situation beyond our control, the consequences of which could not have been avoided even if all reasonable measures had been taken. Our liability, except in cases involving death, injury or illness, shall be limited to a maximum of three times the cost of your travel arrangements. Our liability will also be limited in accordance with and/or in an identical manner to:

a) The contractual terms of the companies that provide the travel services that make up your package. These terms are incorporated into this booking; and

b) Any relevant international convention, for example the Montreal Convention in respect of travel by air, the Athens Convention in respect of travel by sea, the Berne Convention in respect of travel by rail and the Paris Convention in respect of the provision of accommodation, which limit the amount of and conditions under which compensation can be claimed for death, injury, delay to passengers and loss, damage and delay to luggage. We are to be regarded as having all benefit of any limitation of the extent of or the conditions under which compensation is to be paid under these or any conventions. Under passenger rights law you have rights in some circumstances to refunds and/or compensation from your airline in cases of denied boarding, cancellation or delay to flights. Full details will be publicised at relevant airports and available from airlines. However, reimbursement in such cases will not automatically entitle you to a refund of your holiday cost from us. Your right to a refund and/or compensation from us is set out in these booking conditions. If any payments to you are due from us, any payment made to you by the airline or any other service provider will be deducted. If it is impossible to ensure your return as scheduled due to unavoidable and extraordinary circumstances, we will bear the cost of necessary accommodation, if possible of equivalent category, for a maximum of three nights. The limit doesn't apply to persons with reduced mobility and any person accompanying them, pregnant women and unaccompanied minors, or persons in need of specific medical assistance, provided that you notified us of these needs at least 48 hours before the start of your holiday. NB this entire clause 8 does not apply to any separate contracts that you may enter into for excursions or activities whilst on holiday.

**9. Protecting your Money** We provide full financial protection for our package holidays. For flight-based holidays, this is by way of our Air Travel Organiser's Licence number 3148, issued by the Civil Aviation Authority, Gatwick Airport South, West Sussex, RH6 0YR, telephone 0333 103 6350, email claims@caa.co.uk. When you buy an ATOL protected flight or flight inclusive holiday from us you will receive an ATOL Certificate. This lists what is financially protected, where you can get information on what this means for you and who to contact if things go wrong. We will provide you with the services listed on the ATOL Certificate (or a suitable

alternative). In some cases, where we aren't able to do so for reasons of insolvency, an alternative ATOL holder may provide you with the services you have bought or a suitable alternative (at no extra cost to you). You agree to accept that in those circumstances the alternative ATOL holder will perform those obligations and you agree to pay any money outstanding to be paid by you under your contract to that alternative ATOL holder. However, you also agree that in some cases it will not be possible to appoint an alternative ATOL holder, in which case you will be entitled to make a claim under the ATOL scheme (or your credit card issuer where applicable). If we are unable to provide the services listed (or a suitable alternative, through an alternative ATOL holder or otherwise) for reasons of insolvency, the Trustees of the Air Travel Trust may make a payment to (or confer a benefit on) you under the ATOL scheme. You agree that in return for such a payment or benefit you assign absolutely to those Trustees any claims which you have or may have arising out of or relating to the non-provision of the services, including any claim against us, the travel agent (or your credit card issuer where applicable). You also agree that any such claims may be re-assigned to another body, if that other body has paid sums you have claimed under the ATOL scheme. If you book a package holiday other than by air from this brochure, your monies are protected by way of our ABTA bond (W6262).

**10. ABTA** We are a Member of ABTA, membership number W6262. We are obliged to maintain a high standard of service to you by ABTA's Code of Conduct. We can also offer you ABTA's scheme for the resolution of disputes which is approved by the Chartered Trading Standards Institute. If we can't resolve your complaint, go to [www.abta.com](http://www.abta.com) to use ABTA's simple procedure. Further information on the Code and ABTA's assistance in resolving disputes can be found on [www.abta.com](http://www.abta.com).

**11. Complaints** If you have a complaint about any of the services included in your holiday, you must inform the relevant supplier (e.g. your hotelier) without undue delay who will endeavour to put things right. If it is not resolved locally, please follow this up within 28 days of your return home by writing to us giving your booking reference and all other relevant information. Please keep your letter concise and to the point. If you fail to follow the requirement to report your complaint in resort we will have been deprived of the opportunity to investigate and rectify it and this may affect your rights under this booking. Please also see clause 10 above on ABTA.

**12. Additional Assistance** If you're in difficulty whilst on holiday and ask us to help we will provide appropriate assistance, in particular by providing information on health services, local authorities and consular assistance; and helping you to find alternative arrangements and any necessary phone calls/emails. You must pay any costs we incur if the difficulty is your fault.

**13. Passport, Visa and Immigration Requirements** Your specific passport and visa requirements and other immigration requirements are your responsibility and you should confirm these with the relevant Embassies and/or Consulates. We do not accept any responsibility if you cannot travel because you have not complied with any passport, visa or immigration requirements.

**14. Excursions** or other tours that you may choose to book or pay for whilst you are on holiday are not part of your package holiday provided by us.

**15. Travel Agents** All monies you pay to the travel agent are held by him on behalf and for the benefit of the Trustees of the Air Travel Trust at all times. This is subject to the agent's obligation to pay it to us for so long as we do not fail. If we fail, any money held at that time by the agent, or subsequently accepted from you by him, is and continues to be held on behalf of and for the benefit of the Trustees of the Air Travel Trust without any obligation to pay that money to us.

This brochure is our responsibility, as your tour operator. It is not issued on behalf of, and does not commit the airlines mentioned herein or any airline whose services are used in the course of your travel arrangements. Please note that in accordance with Air Navigation Orders in order to qualify for infant status, a child must be under 2 years of age on the date of its return flight.

